



Stanhope Place  
Hyde Park, W2

CHESTERTONS





Boasting exquisite period features and impressive high ceilings, this stunning two-bedroom flat is set within an elegant period conversion, offering a refined blend of classic charm and contemporary living.

A highlight of the property is its generously sized private terrace, providing a tranquil outdoor retreat in the heart of the city. Ideally positioned just moments from the serene expanses of Hyde Park, the residence enjoys a prestigious location on Stanhope Place, a distinguished address nestled just west of Marble Arch.

- Available 7th March
- Period two bedroom and two bathroom
- Terrace
- Next door to the Hyde Park
- High Ceilings

### £3,250 pcm

Additional tenant charges apply (fees apply to non-AST tenancies only)

Tenancy Agreement Fee: £300

References per Tenant/Guarantor: £60

Inventory check (approx. £100 – £250 inc. VAT)

[chestertons.co.uk/property-to-rent/applicable-fees](http://chestertons.co.uk/property-to-rent/applicable-fees)

Energy Efficiency Rating		Current	Potential
95-100	A		
81-94	B		
69-80	C		
55-68	D	68	80
39-54	E		
21-38	F		
1-20	G		

Not energy efficient - higher running costs

England, Scotland & Wales EU Directive 2002/91/EC

**Minimum Term:** 12 months  
**Deposit Required:** Five weeks  
**Local Authority:** Westminster  
**Council Tax Band:** G  
**EPC Rating:** D  
**Furnished, Part Furnished**

### Chestertons Hyde Park & Marylebone Lettings

40 Connaught Street  
 Hyde Park & Marylebone  
 London  
 W2 2AB

hydeparklettingsusers@chestertons.co.uk  
 02072985950

# Stanhope Place, W2

Approximate gross internal area

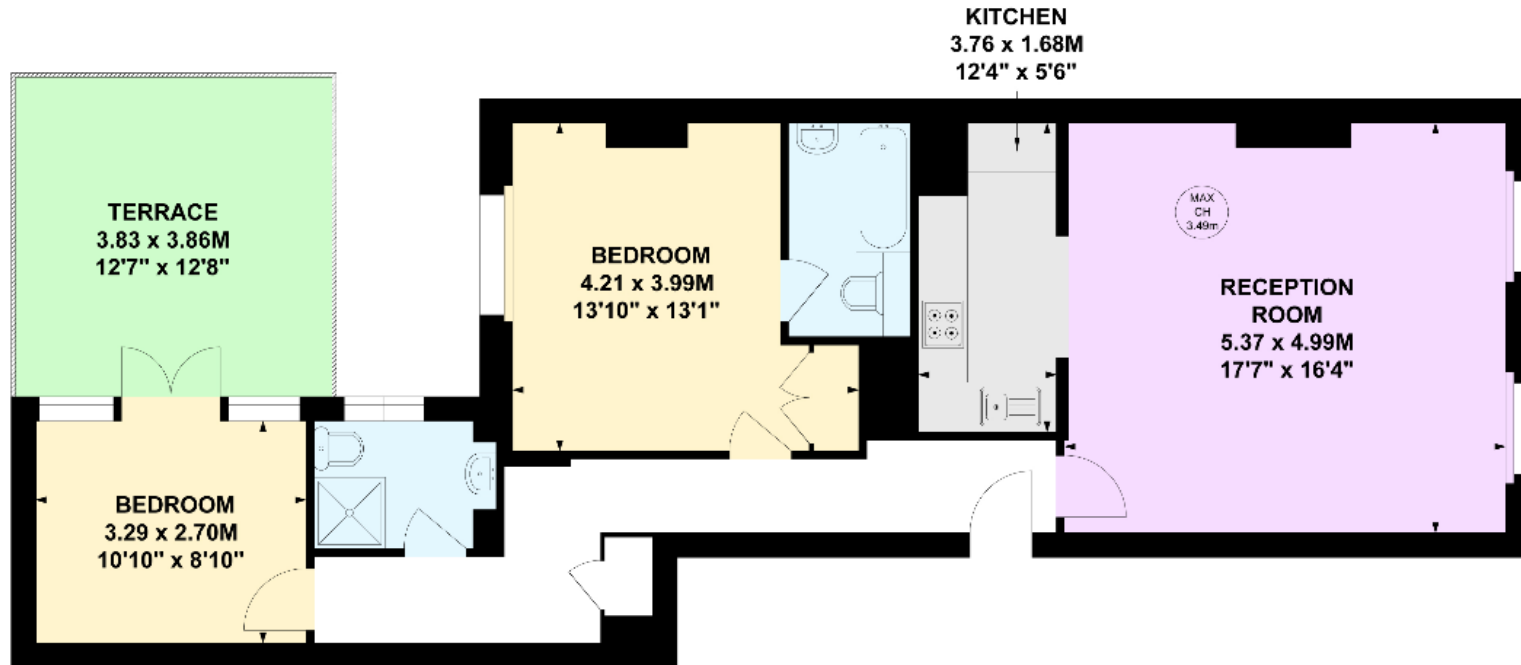
94.18 sq m / 1014 sq ft

(Including Terrace)

Terrace 15.01 sq m / 161 sq ft

Key :

CH - Ceiling Height



## Ground Floor

Not to scale, for guidance only and must not be relied upon as a statement of fact.

All measurements and areas are approximate only

Chesterton Global Ltd trading as Chestertons for themselves and for the vendor of this property whose agents they are, give notice that (i) these particulars do not constitute any part of an offer or contract, (ii) all statements contained within these particulars are made without responsibility on the part of Chestertons or the vendor, (iii) whilst made in good faith, none of the statements contained within these particulars are to be relied upon as a statement or representation of fact, (iv) any intending purchasers must satisfy themselves by inspection or otherwise as to the correctness of each of the statements contained within these particulars, (v) the vendor does not make or give either Chestertons or any person in their employment any authority to make or give representation or warranty whatsoever in relation to this property. Wide angle lenses may be used. ©Copyright Chestertons | Chesterton Global Ltd | Registered Office 40 Connaught Street, Hyde Park, London W2 2AB Registered Company Number 05334580.



This paper is  
100% recyclable