



Rommany Road, SE27 | £735,000

02087028111
dulwichvillage@pedderproperty.com





In General

- An attractive two double bedroom period house
- Upgraded and modernised to a high standard
- Large extended kitchen
- Sliding doors onto the attractive garden
- Highly sought after location
- Excellent schools nearby
- Secluded garden

In Detail

An attractive two double bedroom period house located in this very popular residential road on the border of West Dulwich and West Norwood.

The property has been upgraded and modernised to a high standard and is presented in particularly attractive decorative order throughout. The spacious accommodation comprises two double bedrooms, reception room, extended light and bright kitchen/breakfast room with sliding doors to the garden. Externally to the rear there is an attractive private garden. Further benefits include, a back gate shortcut leading to the brewery, underfloor heating in both bathrooms and the kitchen, A/C unit upstairs, CCTV security and garden lighting.

Rommany Road is well located within easy reach of West Dulwich and Dulwich Village with their parks, outstanding schools, shops and restaurants. Both West Norwood and Crystal Palace are also nearby with numerous shopping and leisure facilities.

Excellent rail links to central London are from nearby Gipsy Hill (London Bridge and Victoria) and West Norwood (London Bridge and Victoria).

EPC: D | Council Tax Band: D

1

2

3

4

5

6

7

8

9

10

11

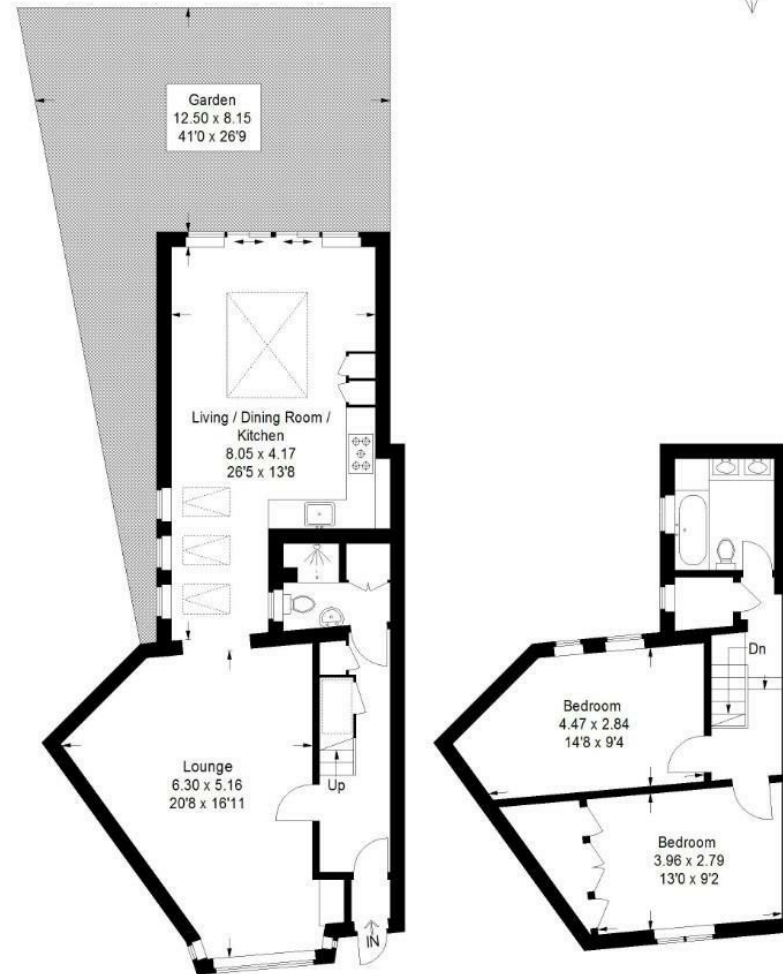
12



Floorplan

Rommany Road, SE27

Approximate Gross Internal Area
109.3 sq m / 1176 sq ft

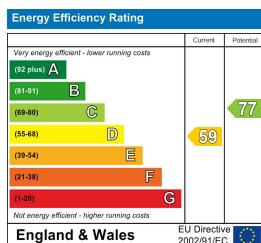


Ground Floor

First Floor

Copyright www.pedderproperty.com © 2026

These plans are for representation purposes only as defined by RICS - Code of Measuring Practice.
Not drawn to Scale. Windows and door openings are approximate. Please check all dimensions, shapes and compass bearings before making any decisions reliant upon them.



Pedder Property Ltd trading as Pedder for themselves and for the vendor/landlord of this property whose agents they are, give notice that (1) these particulars do not constitute any part of an offer or contract, (2) all statements contained within these particulars are made without responsibility on the part of Pedder or the vendor/landlord, (3) whilst made in good faith, none of the statements contained within these particulars are to be relied upon as a statement of representation or fact, (4) any intending purchaser/tenant must satisfy him/herself by inspection or otherwise as to the correctness of each of the statements contained within these particulars, (5) the vendor/landlord does not make or give either Pedder or any person in their employment any authority to make or give representation or warranty whatsoever in relation to this property.