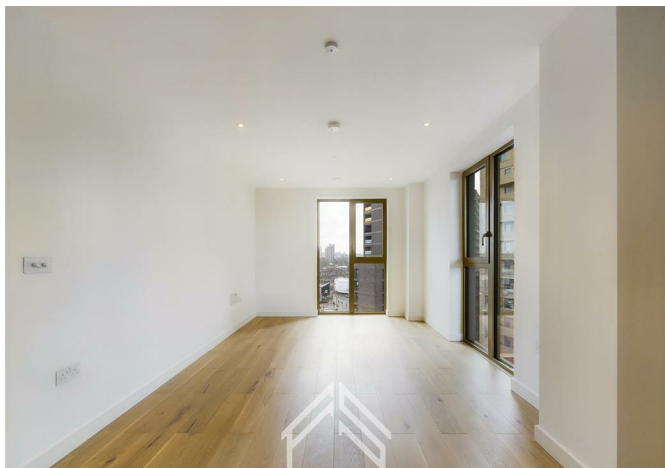




23322 1 Ashley Road, Heart of Hale, Tottenham Hale, N17 9LP
£1,900 Per month



23322 1 Ashley Road, Heart of Hale, Tottenham Hale, N17 9LP

£1,900 Per month

Discover contemporary urban living in this elegant 1-bedroom, 1-bathroom flat, now available for rent. Nestled within a prestigious development just a 2-minute walk from Tottenham Hale Station, this property offers stunning city views and a lifestyle of unparalleled convenience. The flat comes unfurnished, allowing you to personalize your space, and features high-quality integrated appliances for a sleek, modern feel.

Enjoy the added security and convenience of a 24-hour concierge service and vibrant communal lounges on the first floor. For health enthusiasts, a private gym is located on the ground floor, available for an additional £25 a month. Embrace a luxurious living experience in a dynamic neighborhood.

Description

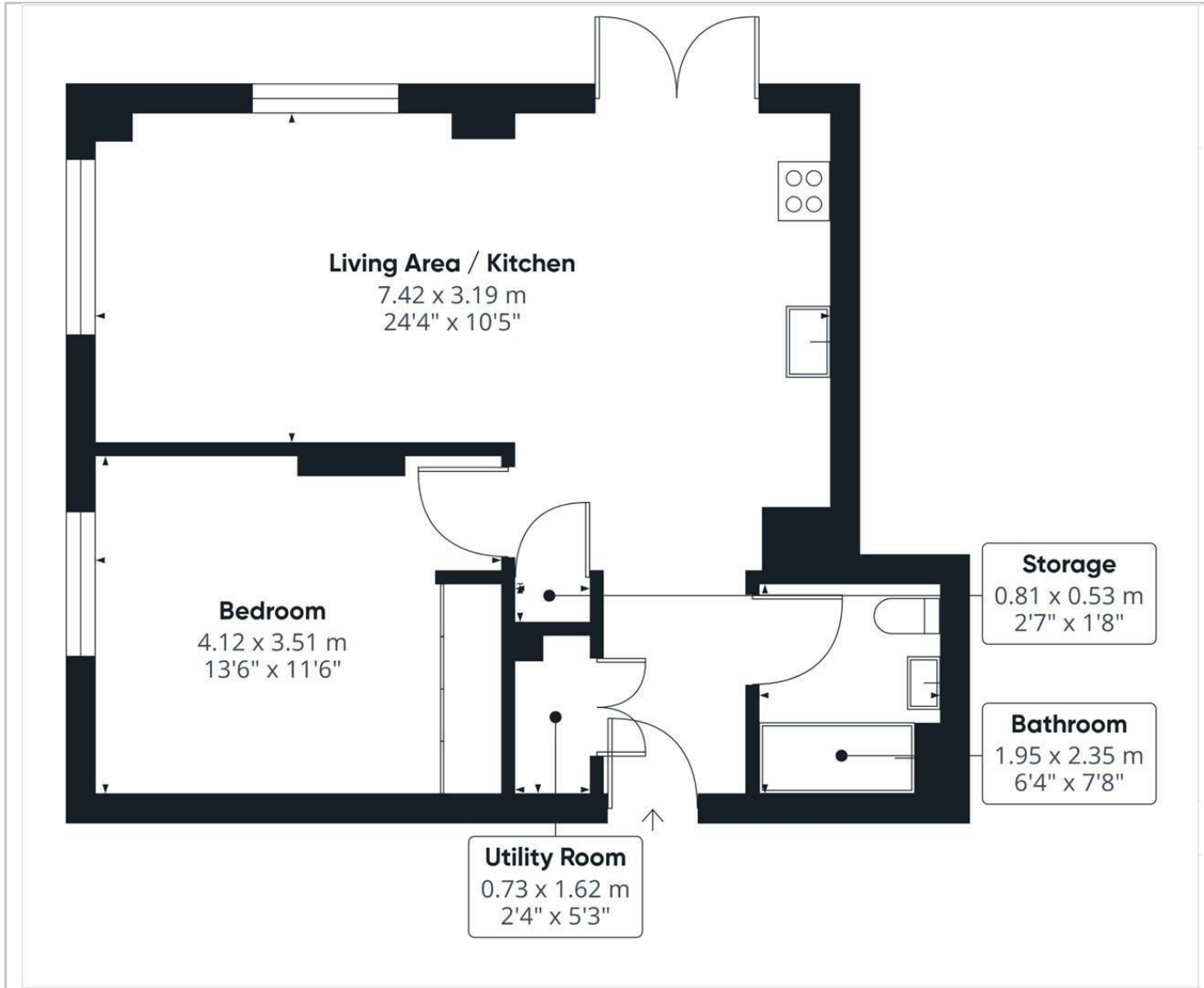


Situation

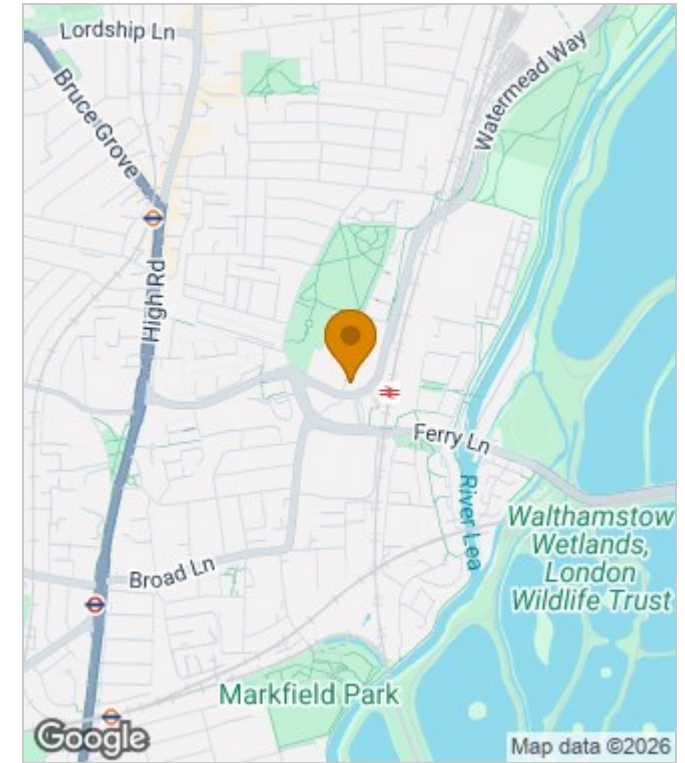


Unfurnished
Council Tax Band: C
Available:

Floor Plans



Area Map



Energy Performance Graph



These particulars, whilst believed to be accurate are set out as a general outline only for guidance and do not constitute any part of an offer or contract. Intending purchasers should not rely on them as statements of representation of fact, but must satisfy themselves by inspection or otherwise as to their accuracy. No person in this firm's employment has the authority to make or give any representation or warranty in respect of the property.