



PUTTERILLS

est. 1992

Heathfield Rd, Hitchin, SG5 1TB
Offers Over: £450,000
Freehold

PROPERTY SUMMARY

This two-bedroom bungalow in the popular market town of Hitchin is offered with no onward chain and provides well-proportioned, versatile accommodation including two bedrooms, a bathroom and two reception rooms. The property offers significant potential to extend (STPC), allowing buyers to tailor and enhance the living space. Outside, there is a private south-westerly facing garden, ideal for enjoying natural light throughout the day. Additional benefits include excellent parking with a garage, driveway and carport. Conveniently located within the catchment of well-regarded schools, the home is within easy walking distance of Hitchin town centre and Hitchin train station, providing excellent commuter links to London King's Cross and Cambridge.

2



1



2



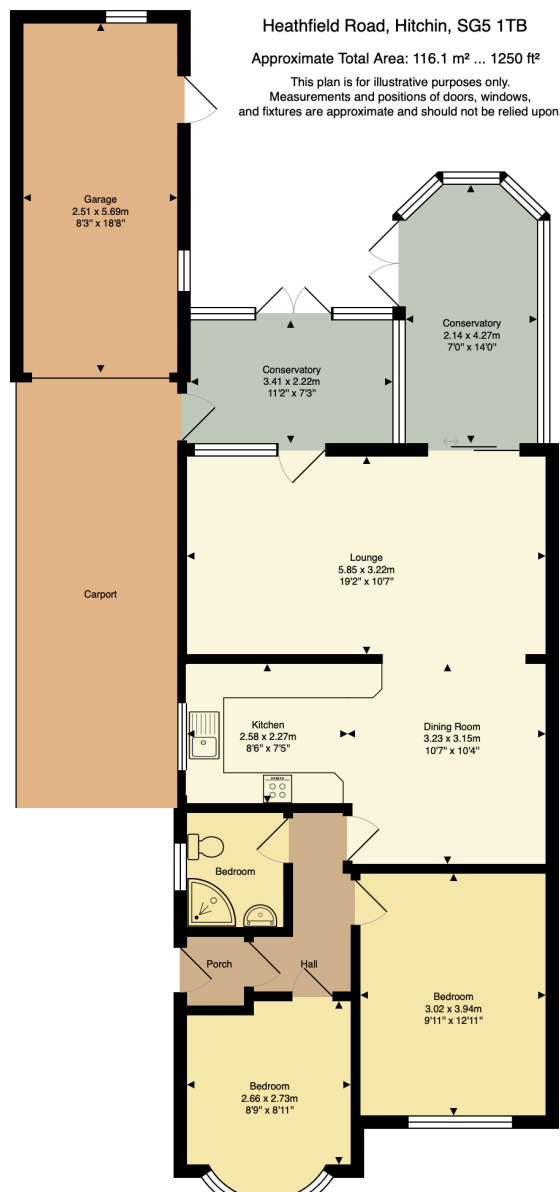










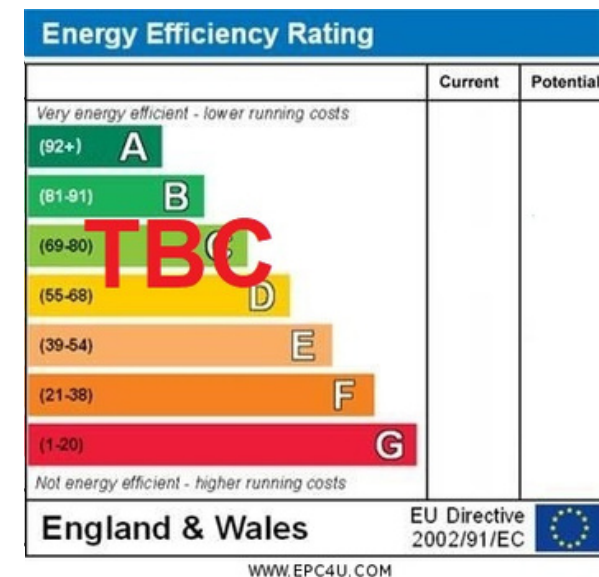


LOCAL AUTHORITY
North Herts

TENURE
Freehold

COUNCIL TAX BAND
TBC

VIEWINGS
By prior appointment only



Agents Note: Whilst every care has been taken to prepare these particulars, they are for guidance purposes only. All measurements are approximate and are for general guidance purposes only and whilst every care has been taken to ensure their accuracy, they should not be relied upon and potential buyers/tenants are advised to recheck the measurements



OFFICE ADDRESS

Putterills Hitchin
60 Hermitage Road
Hitchin
SG5 1DB

CONTACT DETAILS

01462 632222
hitchin@putterills.co.uk
www.putterills.co.uk