



Fortis Green Avenue, N2 £1,395,000

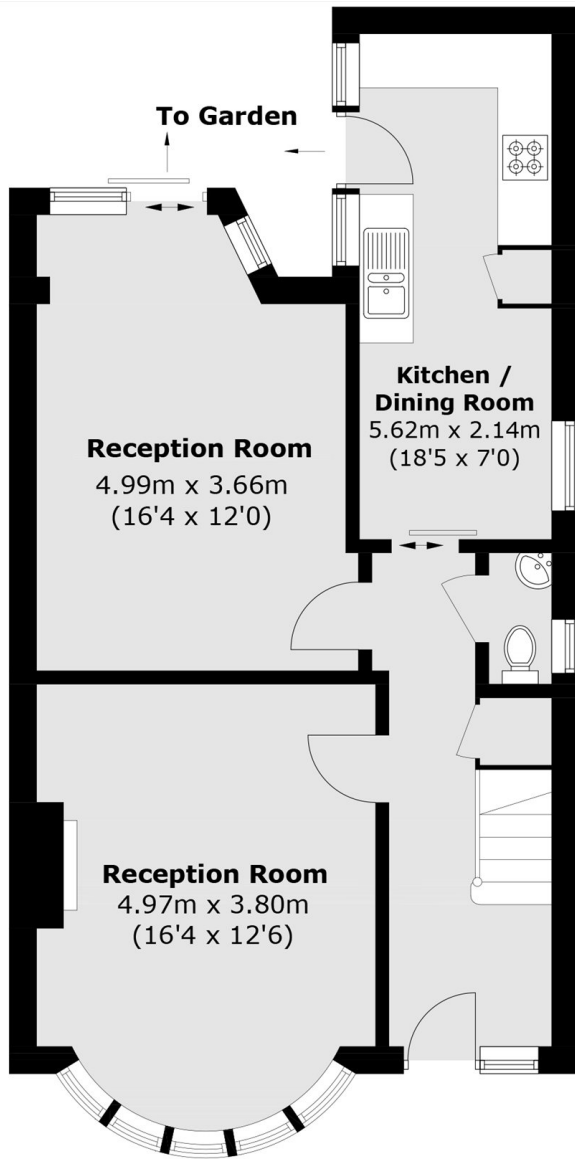
This refurbished Edwardian semi-detached family home comes with two reception rooms, a private kitchen and a west-facing garden. Benefiting from high ceilings, period fireplaces, and strong potential for a loft and rear extension (STPP) making this a standout opportunity for modern family living and adding future value.

Fortis Green Avenue enjoys a prime position between Muswell Hill and East Finchley, offering a rare blend of village-style charm and excellent connectivity. The area is known for its leafy residential streets, outstanding schools, and a strong community feel along with a reasonable walk to East Finchley station.

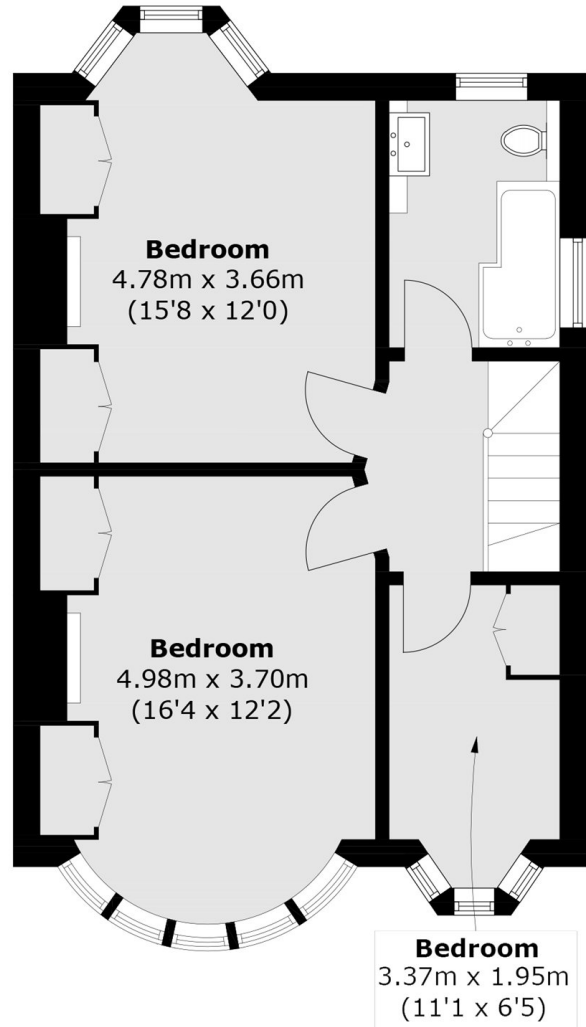
Features

Three Bedrooms
Guest WC
Period Features
Semi-Detached
Fully Double Glazed
West Facing Garden

Fortis Green Avenue,
London, N2



Ground Floor



First Floor

Total area (approx.): 109.3 sq. m (1,176.4 sq. ft)