



RESIDENTIAL



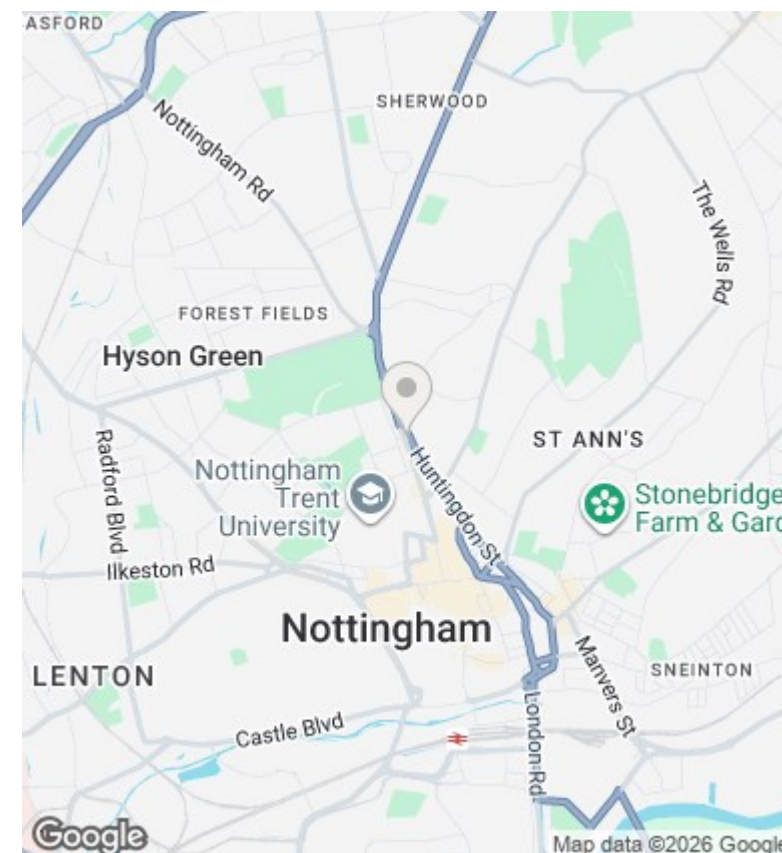
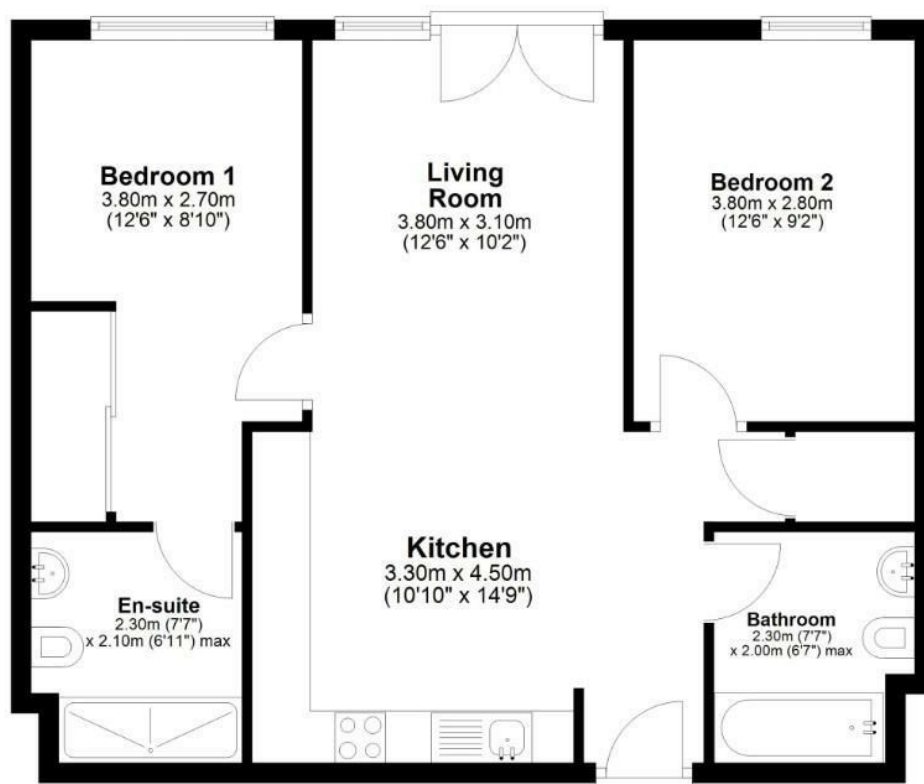
12 Huntingdon Street, Nottingham, NG1 1AW

£180,000

- Prime Nottingham City Centre location
- Sold with Tenant in Situ
- Two spacious double bedrooms with modern interiors
- Open-plan living and kitchen area with contemporary finish
- Secure, Well-maintained Development
- Turnkey Investment – Income from day one

Unit 1 Feast Field, Horsforth, Leeds, LS18 4TJ
0113 3224 345

info@tkiproperty.co.uk
www.tkiproperty.co.uk



Directions

Viewings

Viewings by arrangement only. Call 0113 3224 345 to make an appointment.

Council Tax Band

EPC Rating:

Energy Efficiency Rating		
	Current	Potential
Very energy efficient - lower running costs		
(92 plus) A		
(81-91) B		
(69-80) C		
(55-68) D		
(39-54) E		
(21-38) F		
(1-20) G		
Not energy efficient - higher running costs		
England & Wales	EU Directive 2002/91/EC	