



New Road, Rochester ME1 1DX

£1,050 Per Calendar Month

Available NOW | Allocated Parking | Popular Rochester Location

A well-presented one-bedroom flat ideally located in the highly sought-after area of Rochester. The property is conveniently positioned within easy reach of the town centre and mainline train stations, making it perfect for commuters. The property consists of a cosy lounge, separate kitchen with integrated oven and hob, large double bedroom with bay window and spacious bathroom.

The accommodation benefits from double glazing, gas central heating, and an allocated parking space. Early viewing is highly recommended.

MEASUREMENTS:

LOUNGE 2.81M X 3.71M

KITCHEN 2.59M X 2.76M

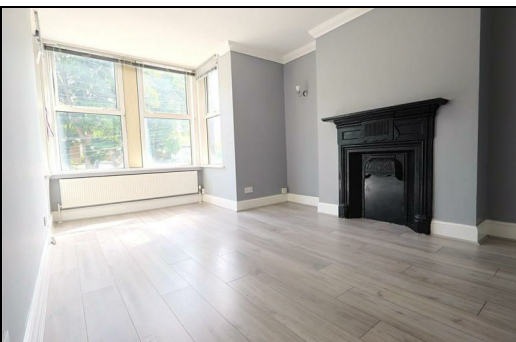
BATHROOM 2.16M X 2.51M

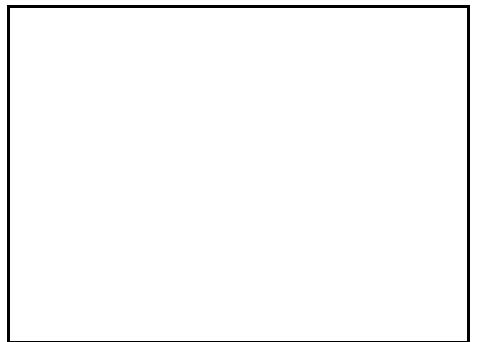
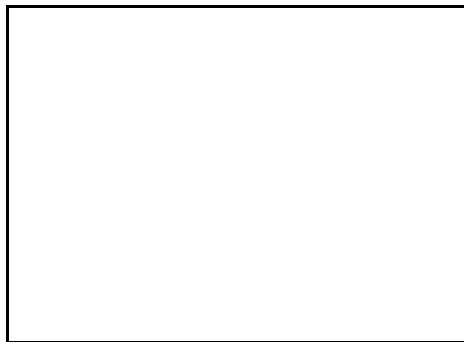
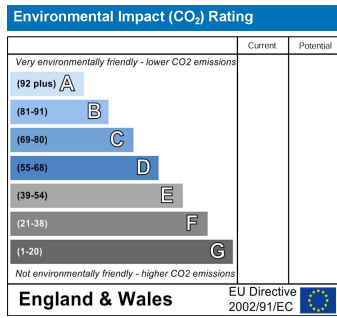
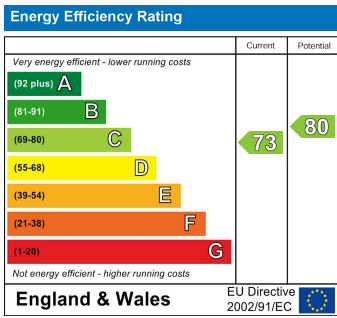
BEDROOM 3.30M X 3.52M PLUS BAY WINDOW

CR Real Estate are part The Ombudsman Redress Scheme and are a member of the Propertymark Client Money Protection Scheme. Tenant deposits are protected by the Tenancy Deposit Scheme. For more information, please contact us.

Client Money Protection is provided by: Client Money Protect. Scheme Ref: CMP004209

Independent redress is provided by: The Property Ombudsman (TPO). Membership Number: E01687





ESTATE AGENCY : REDEFINED

