

Uckfield 01825 703000
Crowborough 01892 489000
Heathfield 01435 511800

Peter Oliver



Mutton Hall Hill, Heathfield, TN21 8NB

- ▼ 2 Double Bedrooms
- ▼ Upper Floor Apartment
- ▼ Allocated Parking
- ▼ Walking Distance To Town
- ▼ 2 Bathrooms
- ▼ Bright & Airy



EPC RATING

Current:

77 c

Potential:

78 | c

£205k - £215k



Mutton Hall Hill, Heathfield, TN21 8NB

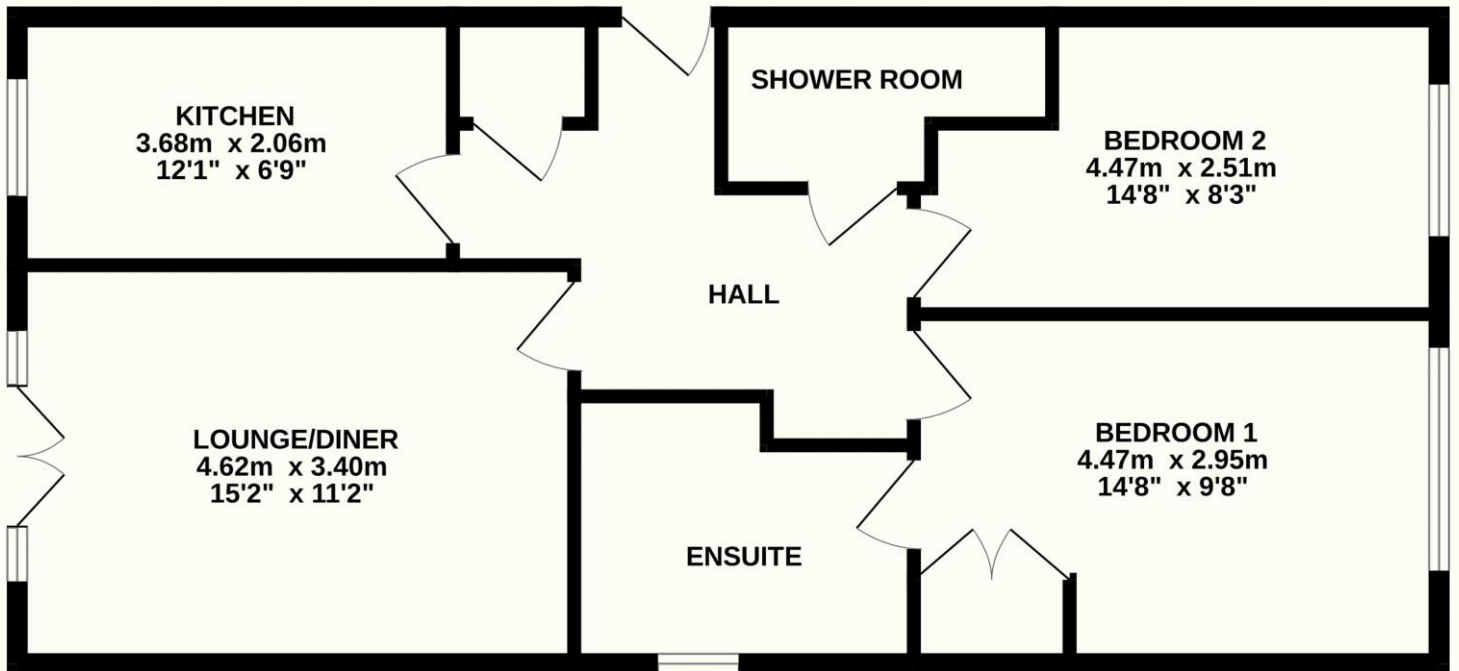
This spacious upper floor apartment offers a fantastic opportunity for those seeking a bright and airy home in a convenient location. Situated within easy walking distance of the vibrant high street, with its array of shops, cafes, restaurants, and transport links, the property enjoys excellent accessibility without the hustle of being directly on the main thoroughfare. The apartment is beautifully presented throughout, having been well-maintained and tastefully finished to a high standard. It benefits from an abundance of natural light that floods the generously proportioned rooms, creating a fresh, welcoming atmosphere ideal for modern living. Accommodation comprises a welcoming entrance hall leading to a superb open-plan sitting/dining room and fitted kitchen, perfect for relaxed everyday living and entertaining. There are two good-sized double bedrooms, including a master bedroom with en suite facilities, plus a separate shower room, providing comfortable and flexible space. Further highlights include allocated parking for hassle-free parking and secure entry. This spacious and secure upper floor apartment represents an ideal purchase for professionals, first-time buyers, or those looking to downsize, viewing is highly recommended to fully appreciate the light-filled interiors and prime position.

Uckfield 01825 703000
Crowborough 01892 489000
Heathfield 01435 511800

Peter Oliver







TOTAL FLOOR AREA : 67.6 sq.m. (727 sq.ft.) approx.

Whilst every attempt has been made to ensure the accuracy of the floorplan contained here, measurements of doors, windows, rooms and any other items are approximate and no responsibility is taken for any error, omission or mis-statement. This plan is for illustrative purposes only and should be used as such by any prospective purchaser. The services, systems and appliances shown have not been tested and no guarantee as to their operability or efficiency can be given.

Made with Metropix ©2026



TENURE: LEASEHOLD COUNCIL TAX BAND: C

GROUND RENT: £150pa

MAINTENANCE/SERVICE CHARGE: £1350pa

LEASE END DATE: 215 for 1/10/2005

Uckfield 01825 703000

Crowborough 01892 489000

Heathfield 01435 511800

info@peteroliverhomes.co.uk

Peter Oliver

