



Let **UK** Home

1 Bedrooms

Flat

Located in Salford

£900 Per Month



padmin@letukhome.co.uk

<https://www.letukhome.co.uk/>

01615219812



Furness Quay Salford

M50 3DD



Let UK Home are proudly present this modern and elegant one-bedroom apartment, located in the prime area of Salford Quays in Manchester, within the sought-after Furness Quay residential district. Nestled right next to MediaCityUK, it boasts unobstructed waterside views, perfectly blending urban vibrancy with the tranquility of waterfront living, creating a comfortable and relaxing environment.

On-Site Amenities: The development offers concierge and security services, alongside a rooftop terrace with panoramic views and communal leisure spaces. All floors are accessible via lifts for easy movement. The property is kept clean and tastefully decorated throughout, allowing residents to unwind while taking in waterside scenery from the viewing terraces or relax in the shared facilities for a truly pleasant living experience.

Education: The area is rich in educational resources, with Salford University right on the doorstep. Excellent transport links also provide seamless access to the University of Manchester, Manchester Metropolitan University, and the University of Salford, creating a vibrant academic atmosphere.

Transport: Located just moments from the key Salford Quays Metrolink stop, the area benefits from an extensive public transport network that connects easily to all parts of Manchester. It also offers convenient access to national transport routes, making travel across the UK straightforward. Commuting to university, work, or exploring the city is completely hassle-free.

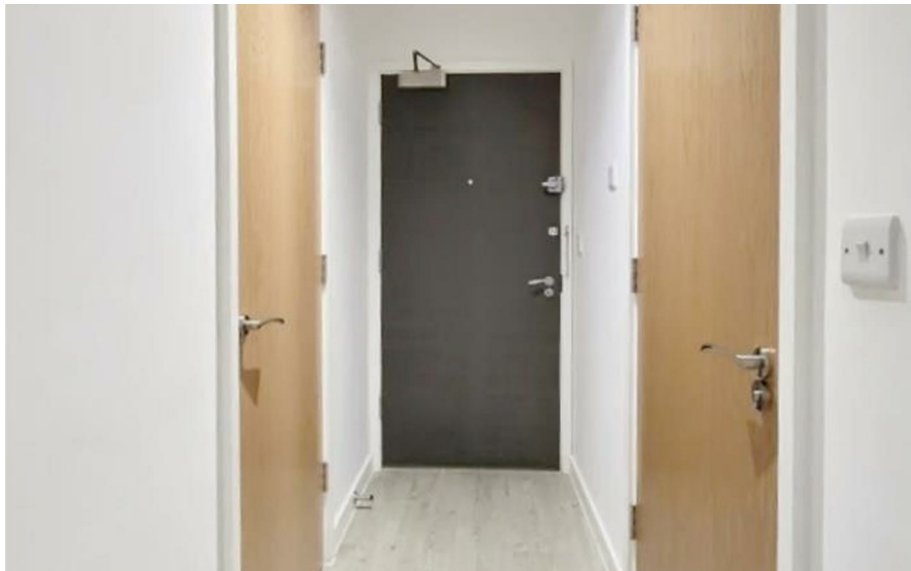
Lifestyle: The surrounding area is lined with a variety of independent restaurants, cafes, leisure outlets, and convenience stores, making everyday dining and

Furness Quay Salford

£900 Per Month

- Cooker
- Double Bed
- Lockable Bedroom
- EPC Rating C

- Dishwasher
- Freezer
- Washing Machine





Let **UK** Home

1/F, St James Tower 7 Charlotte
Street
Manchester
M1 4DZ

01615219812

pmadmin@letukhome.co.uk

Council Tax Band: B

Local Authority:

Agents Note: Whilst every care has been taken to prepare these particulars, they are for guidance purposes only. All measurements are approximate and are for general guidance purposes only and whilst every care has been taken to ensure their accuracy, they should not be relied upon and potential buyers/tenants are advised to recheck the measurements.

Energy Efficiency Rating		Current	Potential
Very energy efficient - lower running costs			
(92 plus) A			
(81-91) B			
(69-80) C			
(55-68) D			
(39-54) E			
(21-38) F			
(1-20) G			
Not energy efficient - higher running costs			
England & Wales	EU Directive 2002/91/EC		

<https://www.letukhome.co.uk/>