



Curzon Road, W5

£475,000

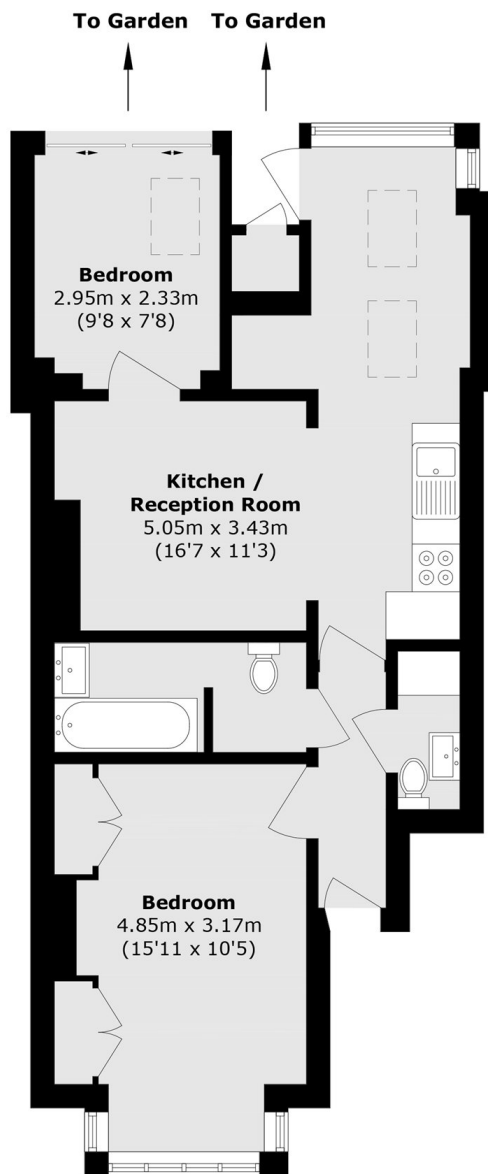
This ground floor two bedroom conversion apartment has been refreshed and modernised by the current owners. Offered to the market with no onward chain, there is a spacious kitchen/reception room, two bedrooms and a private West facing garden.

Located just off of the ever popular Pitshanger Lane with its range of shops, cafés, restaurants and amenities for all. On the door step of Pitshanger Park and Ealing Golf Course with excellent local schools as well as direct bus links to Ealing Broadway station and the Elizabeth Line.

Features

- Ground Floor
- Two Bedrooms
- Private Garden
- No Onward Chain
- Long Underlying Lease
- Pitshanger Location

Curzon Road, London, W5



Total area (approx.): 54.7 sq. m (588.7 sq. ft)
External Cupboard area (approx.): 0.7 sq. m (7.5 sq. ft)