

4 Renner Croft,
Guide Price £315,000

🛏 2 🚿 2 🚻 1



- Two Double Bedrooms
- Open Plan Living Area
- Ground Floor Cloakroom
- Nest Heating System
- Superb Access to A5 & M1
- Well Integrated Kitchen
- En-Suite Shower Room
- Driveway Parking For 2 Cars
- Modern Development
- Please Quote Reference MS0216

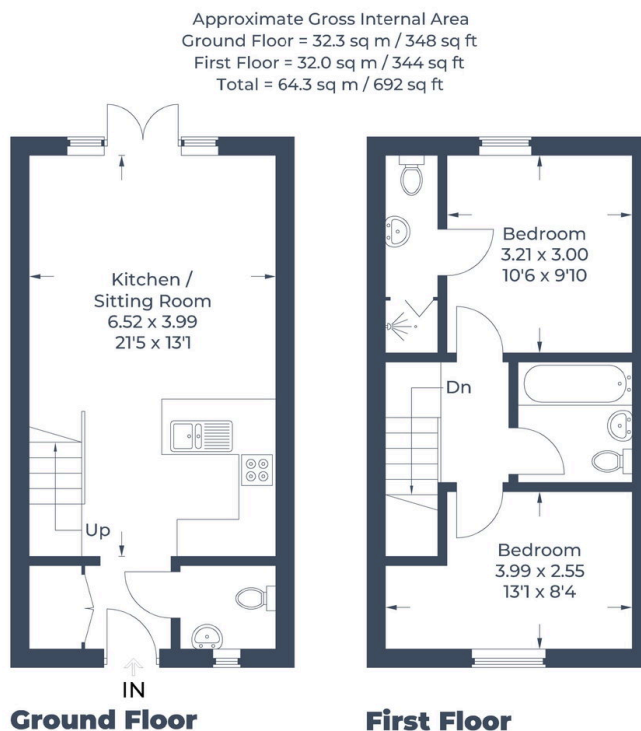


Illustration for identification purposes only,
 measurements are approximate, not to scale.
 © CJ Property Marketing Produced for EXP - Mark Summers

An immaculately presented 2 bedroom semi-detached nearly new-build property on a modern estate on the southern edge of Dunstable.

Internal porch, cloakroom, open plan living area with well integrated kitchen, landing, two double bedrooms with en-suite to master, family bathroom, low maintenance rear garden with patio and

decking area, driveway parking for 2 cars, uPVC double glazing and gas central heating controlled by Nest.

Please Quote Reference MS0216