

# George Rodgers Close

Hulland Ward, Ashbourne, DE6 3GY

John German



John German



# George Rodgers Close

Hulland Ward, Ashbourne, DE6 3GY

£425,000

Modern 4-bedroom detached home in a popular village setting. Two reception rooms, dining kitchen, utility and cloakroom. Ensuite and family bathroom. Southerly garden, garage and driveway. Fibre broadband. Close to Carsington Water with easy access to Ashbourne, Belper, Derby and Wirksworth.



Located within a popular and well-regarded development on the edge of Hulland Ward, 16 George Rodgers Close is a modern four-bedroom detached home offering well-balanced and versatile accommodation suited to family living or those seeking the simplicity of a modern home. With a south-facing garden and close proximity to Carsington Water, the property combines everyday practicality with an enviable lifestyle setting.

Internally, the layout includes two reception rooms, with a spacious sitting room and a separate snug providing flexibility for use as a home office, playroom or additional living space. The dining kitchen forms the heart of the home, designed for both everyday use and entertaining, with the added practicality of a separate utility room and guest cloakroom. Upstairs, the property offers four well-proportioned double bedrooms, including a principal bedroom with ensuite, alongside a family bathroom serving the remaining rooms.

Externally, the property benefits from a single garage and driveway providing off-street parking. The rear garden enjoys a favourable southerly aspect and has been thoughtfully landscaped to create an attractive yet manageable outdoor space. The location provides convenient access to Ashbourne, Belper, Derby and Wirksworth, while being close to Carsington Water and surrounding countryside, ideal for walking and outdoor activities. Hulland Ward itself offers a village pub, shop, farm shop and school, contributing to its appeal as a practical and well-connected setting.

A composite entrance door opens into a welcoming central reception hallway, with the staircase to the first floor and access to the principal ground floor rooms including the dining kitchen, sitting room, snug, guest cloakroom and a useful storage cupboard. At the heart of the home is a bright and spacious dining kitchen featuring tiled flooring, enhanced by a bay window that floods the room with natural light. The kitchen is fitted with a range of rolled edge work surfaces incorporating a 1 ½ stainless steel sink with drainer and mixer tap, complemented by matching upstands. Integrated appliances include a fridge freezer, dishwasher, double electric oven with grill and a five-ring gas hob with extractor over. A peninsula breakfast bar provides additional preparation space and informal seating, with a defined dining area and access through to the utility room. The utility room continues the tiled flooring and offers further work surface space with an inset stainless steel sink and mixer tap. There is plumbing and space for a washing machine and tumble dryer, along with wall-mounted boiler and consumer unit. A composite door leads directly out to the rear garden.

The sitting room is a well-proportioned and bright reception space, with uPVC French doors opening onto the south facing rear garden - ideal for indoor-outdoor living during the warmer months. In addition, the separate snug provides valuable flexibility, easily serving as a home office, playroom or additional lounge to suit a variety of lifestyles. The ground floor is completed by a guest cloakroom fitted with a wall-mounted wash hand basin, low level WC and extractor fan.

To the first floor, a semi-galleried landing gives access to all four bedrooms, the family bathroom and an airing cupboard housing the pressurised hot water cylinder. The principal bedroom is a spacious double room with fitted mirrored sliding wardrobes and access to an ensuite shower room. The ensuite is fitted with tiled flooring, wash hand basin, low level WC and a double shower enclosure with mains-fed rainfall shower, along with a heated towel rail and extractor fan. The remaining three bedrooms are all double rooms, offering flexibility for family use or guest accommodation. The family bathroom is fitted with tiled flooring, a wash hand basin, low level WC, separate bath with mixer tap and a separate shower unit with mains shower and extractor fan.

Externally, the rear garden has been well maintained and thoughtfully arranged, featuring a large porcelain tiled seating area offering the perfect setting for entertaining, raised timber planters with established planting, gabion basket borders and additional planted areas with bark chippings. While the lawned section and designated play area also make it suited for family use. To the side of the property, a tarmac driveway provides off-street parking and leads to a single garage with up and over door, power and lighting.

The development also benefits from a well-maintained communal play area located just a short distance from the property. Positioned to take advantage of open views, it provides an attractive outdoor space for recreation and is particularly well suited to families with children, offering a safe and convenient area for play within easy reach of the home.

Early viewing is highly recommended to fully appreciate the quality, setting and lifestyle this home has to offer.

**Tenure:** Freehold (purchasers are advised to satisfy themselves as to the tenure via their legal representative).

**Please note:** It is quite common for some properties to have a Ring doorbell and internal recording devices.

**Property construction:** Standard

**Parking:** Driveway and parking

**Electricity supply:** Mains

**Water supply:** Mains

**Sewerage:** Mains

**Heating:** Mains gas

(Purchasers are advised to satisfy themselves as to their suitability).

**Broadband type:** Fibre - See Ofcom link for speed: <https://checker.ofcom.org.uk/>

**Mobile signal/coverage:** See Ofcom link <https://checker.ofcom.org.uk/>

**Local Authority/Tax Band:** Derbyshire Dales District Council / Tax Band E

**Useful Websites:** [www.gov.uk/government/organisations/environment-agency](http://www.gov.uk/government/organisations/environment-agency)

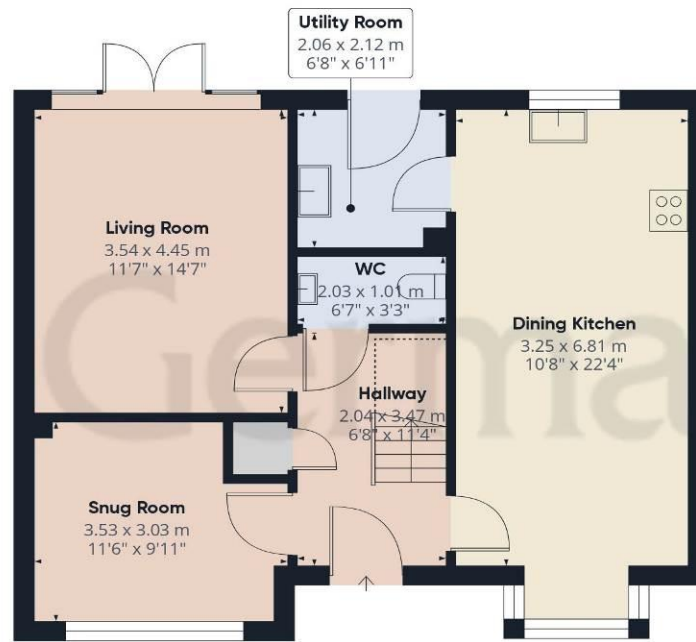
**Our Ref:** JGA28042026

The property information provided by John German Estate Agents Ltd is based on enquiries made of the vendor and from information available in the public domain. If there is any point on which you require further clarification, please contact the office and we will be pleased to check the information for you, particularly if contemplating travelling some distance to view the property. Please note if your enquiry is of a legal or structural nature, we advise you to seek advice from a qualified professional in their relevant field.

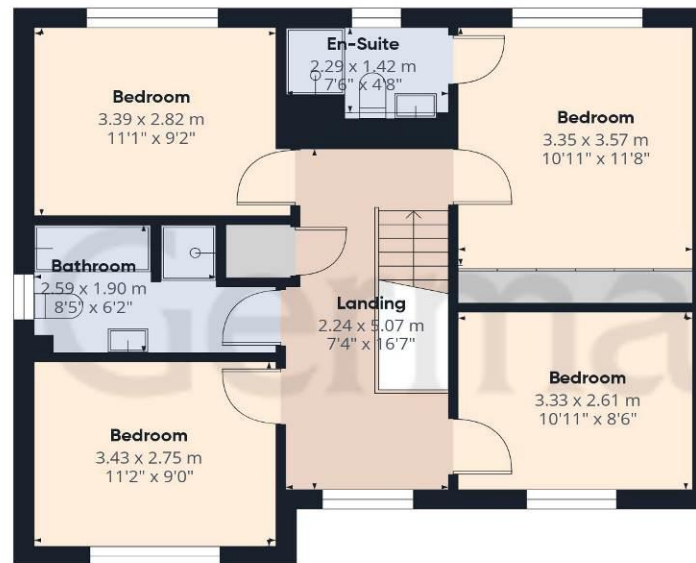
We are required by law to comply fully with The Money Laundering Regulations 2017 and as such need to complete AML ID verification and proof / source of funds checks on all buyers and, where relevant, cash donors once an offer is accepted on a property. We use the Checkboard app to complete the necessary checks, this is not a credit check and therefore will have no effect on your credit history. With effect from 1st March 2025 a non-refundable compliance fee of £30.00 inc. VAT per buyer / donor will be required to be paid in advance when an offer is agreed and prior to a sales memorandum being issued.







Ground Floor



Floor 1



**Approximate total area<sup>(1)</sup>**

125.2 m<sup>2</sup>

1346 ft<sup>2</sup>

**Reduced headroom**

1.5 m<sup>2</sup>

16 ft<sup>2</sup>

(1) Excluding balconies and terraces

Reduced headroom

..... Below 1.5 m/5 ft

Calculations reference the RICS IPMS 3C standard. Measurements are approximate and not to scale. This floor plan is intended for illustration only.

GIRAFFE360



### Agents' Notes

These particulars do not constitute an offer or a contract neither do they form part of an offer or contract. The vendor does not make or give and Messrs. John German nor any person employed has any authority to make or give any representation or warranty, written or oral, in relation to this property. Whilst we endeavour to make our sales details accurate and reliable, if there is any point which is of particular importance to you, please contact the office and we will be pleased to check the information for you, particularly if contemplating travelling some distance to view the property. None of the services or appliances to the property have been tested and any prospective purchasers should satisfy themselves as to their adequacy prior to committing themselves to purchase.

### Referral Fees

**Mortgage Services** - We routinely refer all clients to APR Money Limited. It is your decision whether you choose to deal with APR Money Limited. In making that decision, you should know that we receive on average £60 per referral from APR Money Limited.

**Conveyancing Services** - If we refer clients to recommended conveyancers, it is your decision whether you choose to deal with this conveyancer. In making that decision, you should know that we receive on average £150 per referral.

**Survey Services** - If we refer clients to recommended surveyors, it is your decision whether you choose to deal with this surveyor. In making that decision, you should know that we receive up to £90 per referral.

Score	Energy rating	Current	Potential
92+	A		94 A
81-91	B	85 B	
69-80	C		
55-68	D		
39-54	E		
21-38	F		
1-20	G		



### John German

Compton House, Shawcroft, Ashbourne, Derbyshire, DE6 1GD

01335 340730

ashbourne@johngerman.co.uk

Ashbourne | Ashby de la Zouch | Barton under Needwood  
Burton upon Trent | Derby | East Leake | Lichfield  
Loughborough | Stafford | Uttoxeter

JohnGerman.co.uk Sales and Lettings Agent



