



Luscombe Maye
Since 1873

Church Street, Kingsbridge, TQ7 1DB

Guide Price £150,000

3 1 1



Situated in the heart of Kingsbridge, 136 Church Street is a spacious three bedroom mid-terrace cottage enjoying a large garden and character features. The accommodation offers entrance hall, living room, dining, kitchen, shower room and access to the rear garden from the ground floor. Stairs lead to the first floor where three double bedrooms and a WC are located. Outside, the property has an initial courtyard garden with shared access leading the elevated rear garden, mainly laid to lawn with a range of sheds and a summer house.

On the market for the first time in over 30 years, 136 Church Street requires extensive renovation and improvements throughout.

FURTHER INFORMATION

Council Tax: Band B

Tenure: Freehold

Construction: Standard construction

Electric: Mains. Water: Mains. Heating: Gas. Sewerage: Mains.
Broadband: ADSL. Mobile signal: <https://checker.ofcom.org.uk/>

Parking: No parking.

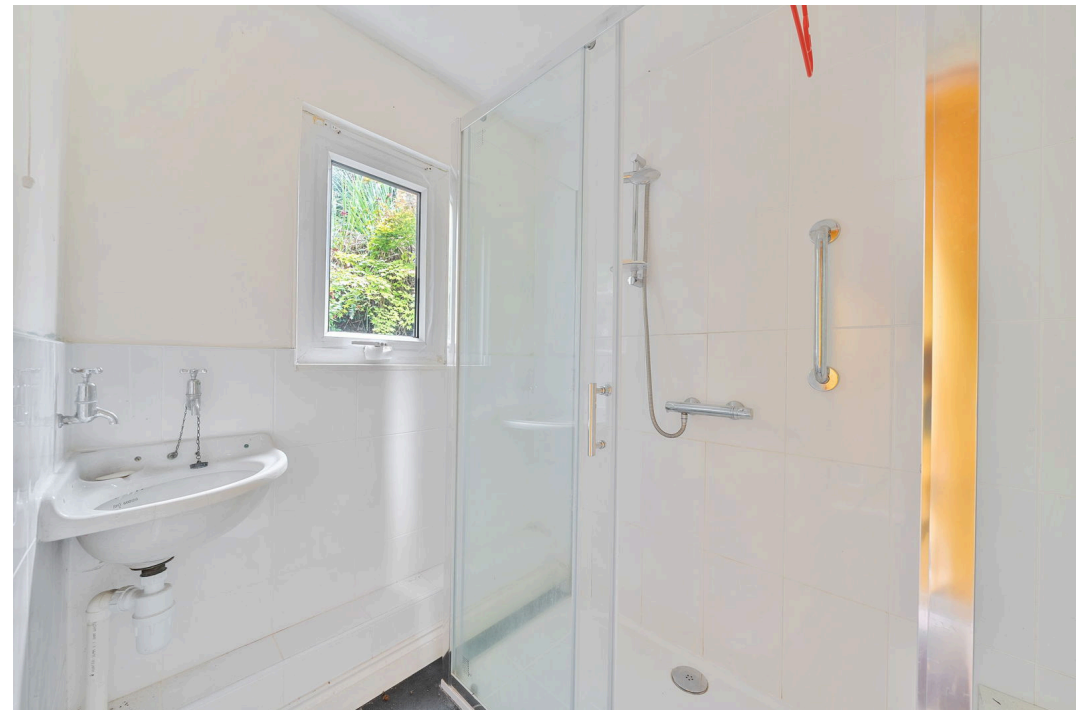
Local Authority: South Hams District Council, Follaton House,
Plymouth Road, Totnes TQ9 5NE. Tel: 01803 861234

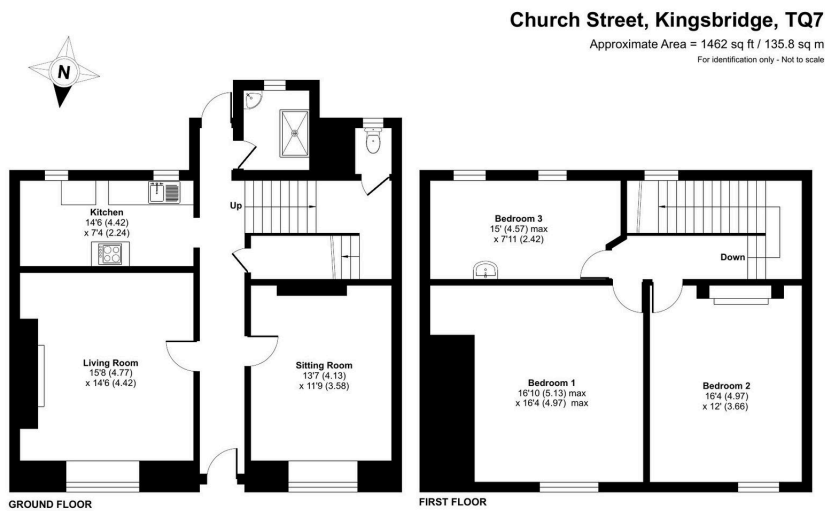
METHOD OF SALE

The property is being offered for sale by Formal Tender (unless sold prior) .

All tenders must be submitted to 62 Fore Street Kingsbridge TQ7 1PP in an envelope clearly marked '136 Church Street, Kingsbridge, TQ7 1DB' on or before 12 noon on Friday 30th January 2026.

Buyers who wish to submit a tender will be required to sign a legal contract and provide a cheque equivalent to 10% of their offer price, as their tender. If either of these two component parts are not





Floor plan produced in accordance with RICS Property Measurement 2nd Edition, incorporating International Property Measurement Standards (IPMS2 Residential). © nrichcom 2025. Produced for Luscombe Maye. REF: 1337009



- 3-Bedroom Terraced Property • Large Garden
- Renovation Potential
- Central Town Location
- Character Period Features
- Spacious Living Accommodation

