



The Old Garage
Bicester Road | Enstone | Chipping Norton | Oxfordshire | OX7 4NH

STEP INSIDE

The Old Garage

Cotswold Lifestyle & Investment Home | Beautiful 3-Bedroom Property with Established Airbnb Income, Private Gardens & Parking | Moments from Soho Farmhouse & Great Tew

The Old Garage is positioned discreetly within the prestigious village of Enstone, moments from Soho Farmhouse and the historic village of Great Tew. This stunning residence presents a rare opportunity to acquire a beautifully appointed Cotswold home with established and immediate income with exceptional lifestyle appeal.

Currently operating as a successful Airbnb with established bookings, the property offers a turnkey investment while equally lending itself to a refined private residence.

Designed for modern living, the interiors are flooded with natural light and have generous open plan spaces that flow seamlessly to the privately enclosed gardens, picture perfect for entertaining after a day exploring the bucolic countryside.

- Established Airbnb investment with ongoing income potential in the heart of the Golden Triangle
- Approx. 1,526 sq ft | beautifully refurbished 3-bedroom Cotswold home
- Light-filled open-plan living with tri-fold doors to the kitchen and sitting room
- Private enclosed garden & entertaining terrace
- Spacious entertaining kitchen with large separate utility/laundry room
- Gated setting with off-street parking for two vehicles
- Flexible accommodation for family living, guests or home working
- Outstanding Cotswold location moments from Soho Farmhouse, Great Tew & Daylesford Organic Farm
- Excellent access to prestigious private members clubs & London via rail
- Freehold | EPC: D (61) | Council Tax: Band G

STEP INSIDE

The Old Garage has been thoughtfully reimagined to create a contemporary home of both style and flexibility. Set behind a private gated entrance, the property enjoys a peaceful position with well balanced accommodation arranged over two floors.

The ground floor is centered around a generous living room, filled with natural light from the tri-fold doors that open directly onto the garden, creating an effortless connection between indoor and outdoor living. The kitchen is equally impressive, offering ample space for entertaining, with tri-fold doors extending the living space further during warmer months. A substantial utility room and cloakroom provide practical support to the main living areas.

Upstairs, a large family bathroom and three generously proportioned bedrooms offer versatile accommodation. The principal bedroom enjoys garden views, while the additional rooms are ideally suited for guests, family or home working.













STEP OUTSIDE

The Old Garage

The property is located off the main road and tucked discretely within an enclosed shared private gravelled courtyard with parking for two vehicles.

The sunny gardens offer privacy and are enclosed by high wooden fencing with secure gated access. Low maintenance landscaping including artificial lawn and a block-paved and gravelled entertaining terrace is particularly designed for ease and cleaning.

The private setting, combined with gated access and off street parking ensures both security, convenience and a lock and leave property for turn-key property solutions.



LOCATION & LIFESTYLE

Enstone is a highly regarded Cotswolds village, known as the Gold Triangle offering a blend of rural charm and accessibility.

Two village pubs are within walking distance, while the surrounding countryside provides endless opportunities for walking, cycling and outdoor pursuits.

The property is exceptionally well positioned situated on the edge of the historic Great Tew Estate with Soho Farmhouse the celebrated private members club just moments away.

Countryside walks, hikes and lifestyle that surround Enstone are truly exceptional, Cornbury Park on the edge of Charlbury is 7 mins drive with Daylesford Organic Farm and the prestigious Bamford Club, RH at Aynho Park, Burford and Stow on the Wold are eqldistant of approximately 20 mins whilst Estelle Manor, the private members club and Oxford only 30 minutes away.

Soho Farmhouse – approx. 3 minutes

Great Tew – approx. 7 minutes, home to Quince & Clover and The Falkland Arms

Daylesford Farm & Bamford Club – approx. 20 minutes

Burford - approx. 20 minutes

Estelle Manor - approx. 25 minutes

Oxford - approx. 30 minutes

Chipping Norton – 4.4 miles

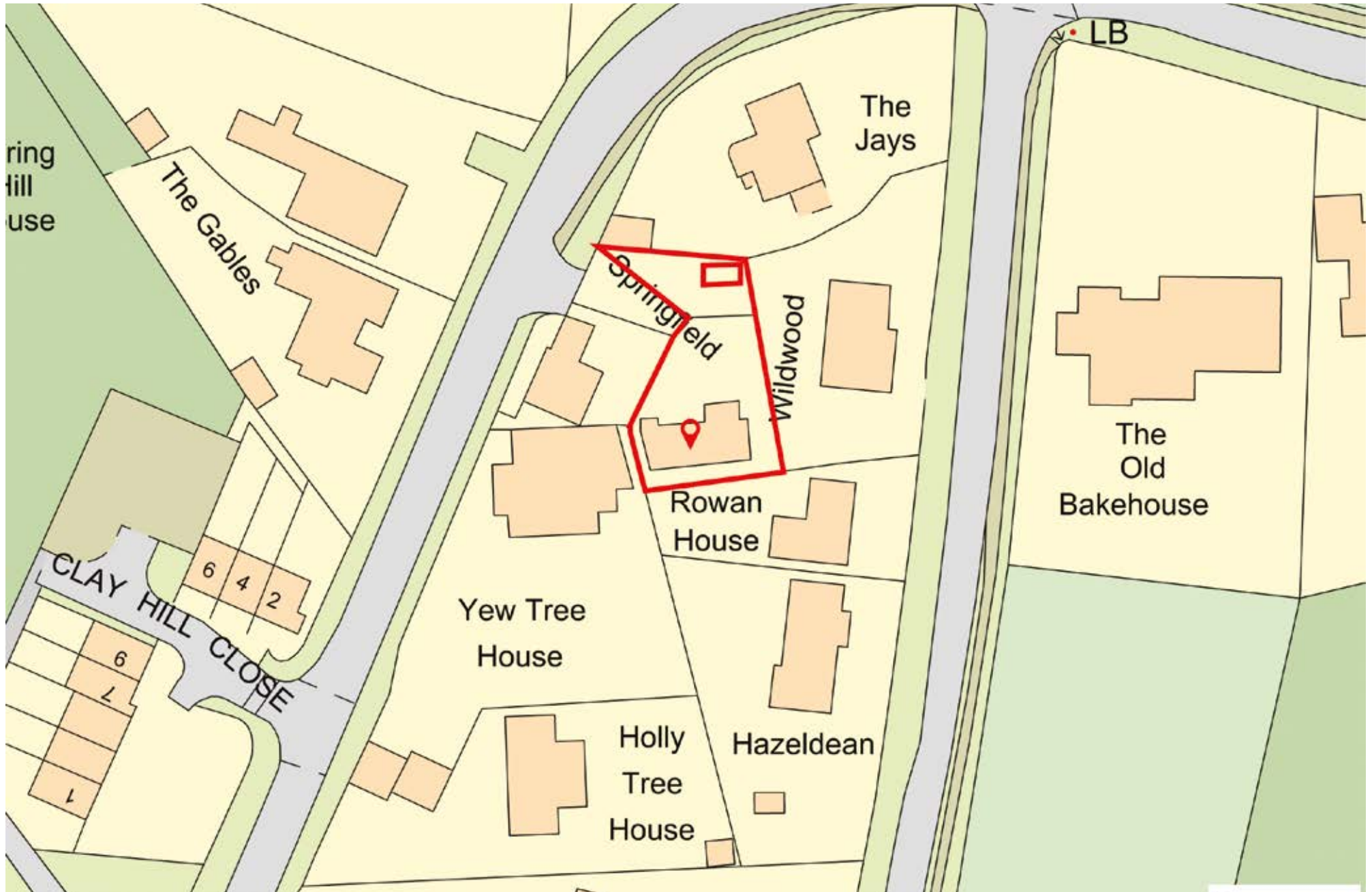
Charlbury – 3.8 miles (mainline rail to London Paddington)

Kingham – 10 miles (mainline rail to LondonPaddington)

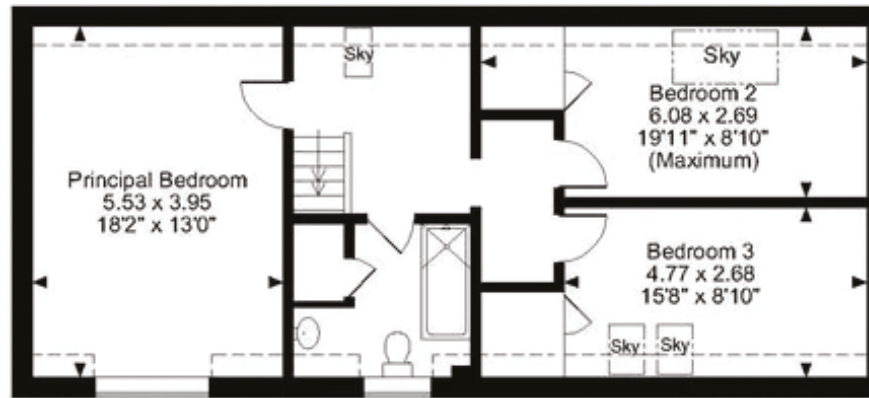
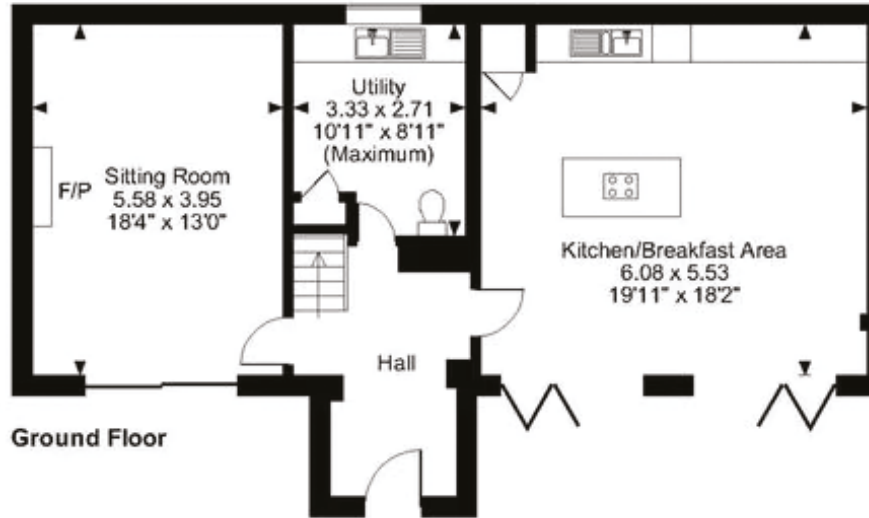
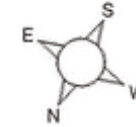
City of Oxford – 23.6 miles

Many local schools are Ofsted rated “Outstanding” with the prestigious Great Tew Primary school only 7 minutes drive. The area is also well served by highly regarded private schools including Kitebrook, Tudor Hall and Kingham Hill.





Springfields, The Old Garage, Bicester Road, Chipping Norton,
Approximate Gross Internal Area
1526 Sq Ft/142 Sq M



First Floor

FOR ILLUSTRATIVE PURPOSES ONLY - NOT TO SCALE

The position & size of doors, windows, appliances and other features are approximate only.

--- Denotes restricted head height

© ehouse. Unauthorised reproduction prohibited. Drawing ref. dig/8500812/SS

| Energy Efficiency Rating | | Current | Potential |
|---|--------------------|-------------------------|-----------|
| Very energy efficient - lower running costs | (92 plus) A | | |
| | (81-91) B | | |
| | (69-80) C | | 78 |
| | (54-68) D | 61 | |
| | (39-53) E | | |
| | (21-38) F | | |
| Not energy efficient - higher running costs | (1-20) G | | |
| England & Wales | | EU Directive 2002/91/EC | |



Agents notes: All measurements are approximate and for general guidance only and whilst every attempt has been made to ensure accuracy, they must not be relied on. The fixtures, fittings and appliances referred to have not been tested and therefore no guarantee can be given that they are in working order. Internal photographs are reproduced for general information and it must not be inferred that any item shown is included with the property. For a free valuation, contact the numbers listed on the brochure. Copyright © 2026 Fine & Country Ltd. Registered in England and Wales. Company Reg No. 8328850. Registered Office: 121 Park Lane, Mayfair, London, W1K 7AG. Printed: 14.05.2026





CAROLINE BATE

PARTNER AGENT

follow Fine & Country Cotswolds and Cheltenham on



Fine & Country Cotswolds and Cheltenham
2 A P Ellis Road, Upper Rissington, Cheltenham GL54 2QB
01608 619919 | 07979 648748 | caroline.bate@fineandcountry.com

