

# Frank Harris & Co.



## Bloomsbury, WC1H

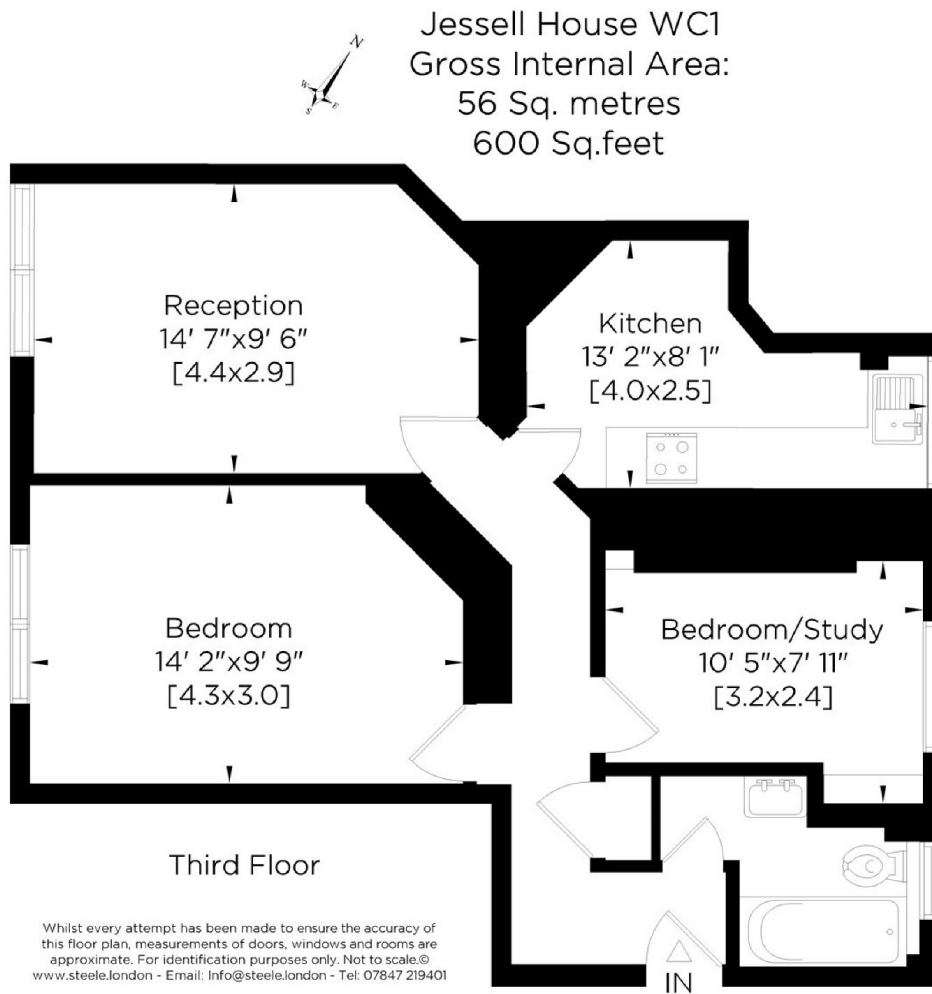
£2,600 Per week

A well presented bright two bedroom property located this well kept mansion block with caretaker. The property comprises one double bedroom and one single bedroom or office , separate kitchen, bathroom , bright South facing reception and wood flooring throughout .

Jessel House is centrally located and just moments to King's Cross/St. Pancras and Russell Square stations and the amenities of the Brunswick Centre.

- Two-Bedrooms • Furnished • Wooden Floors •
- Upper Floor (Lift) • Close to Transport • Separate Kitchen •

# Frank Harris & Co.



Frank Harris & Co. Bloomsbury and Kings Cross  
81 Marchmont Street, London,  
WC1N 1AL  
020 7387 0077  
bloomsburylettings@frankharris.co.uk

Energy Rating: C. We aim to make our particulars both accurate and reliable. However they are not guaranteed; nor do they form part of an offer or contract. If you require clarification on any points then please contact us, especially if you're traveling some distance to view. Please note that appliances and heating systems have not been tested and therefore no warranties can be given as to their good working order.

