



KEBLE STREET, SW17

£925,000

- Victorian family home
- Three double bedrooms
- Large private garden
- Outbuilding
- Excellent condition
- Energy rating: C





ABOUT THE HOME

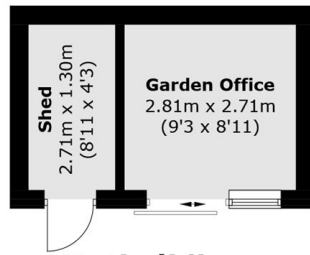
A beautiful three double bedroom Victorian family home benefiting from an impressive garden and outbuilding.

A generous entrance hall benefits from wine storage and leads to a useful utility room. To the front is a double reception room. To the rear, a bright and spacious kitchen opens onto a large, sunny garden, which benefits from an outbuilding with electrics; currently utilised as a home office. On the first floor are two well-proportioned double bedrooms and a modern family bathroom. Stairs lead to the second floor, where there is a spacious third bedroom with an en suite shower room and ample eaves storage. The property has been finished to an excellent standard and has been thoughtfully extended into the loft. It also offers further potential to extend on the ground floor (STPP), presenting an exciting opportunity to create an even larger family home.

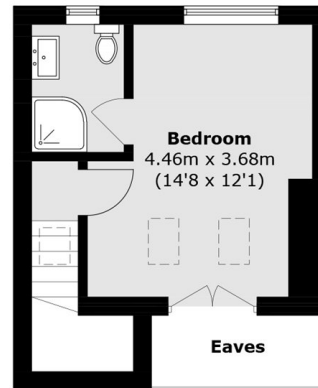
Keble Street is a highly desirable, tree lined residential street with easy access to both Earlsfield mainline railway station and Tooting Broadway underground station. A plethora of trendy restaurants, bars and leisure facilities are also within walking distance.



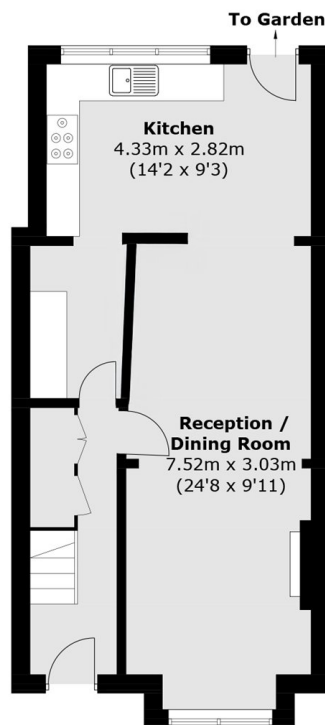




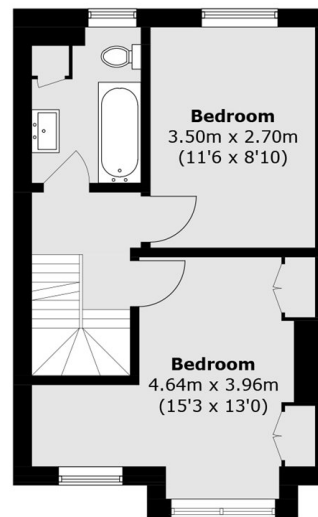
Outbuilding
(Not Shown In Actual
Location / Orientation)



Second Floor



Ground Floor



First Floor

Total area (approx.): 103.5 sq. m (1,114.0 sq. ft)
(Excluding Eaves)
Outbuilding area : 12.2 sq. m (131.3 sq. ft)

JACKSONS EARLSFIELD

372-374 Garratt Lane,
Earlsfield, London, SW18 4ES
Sales: 020 8971 7979
Lettings: 020 8971 7070

Energy Rating: C We aim to make our particulars both accurate and reliable. However they are not guaranteed; nor do they form part of an offer or contract. If you require clarification on any points then please contact us, especially if you're traveling some distance to view. Please note that appliances and heating systems have not been tested and therefore no warranties can be given as to their good working order.