



Black Prince Road, SE1

£3,000 Per calendar month

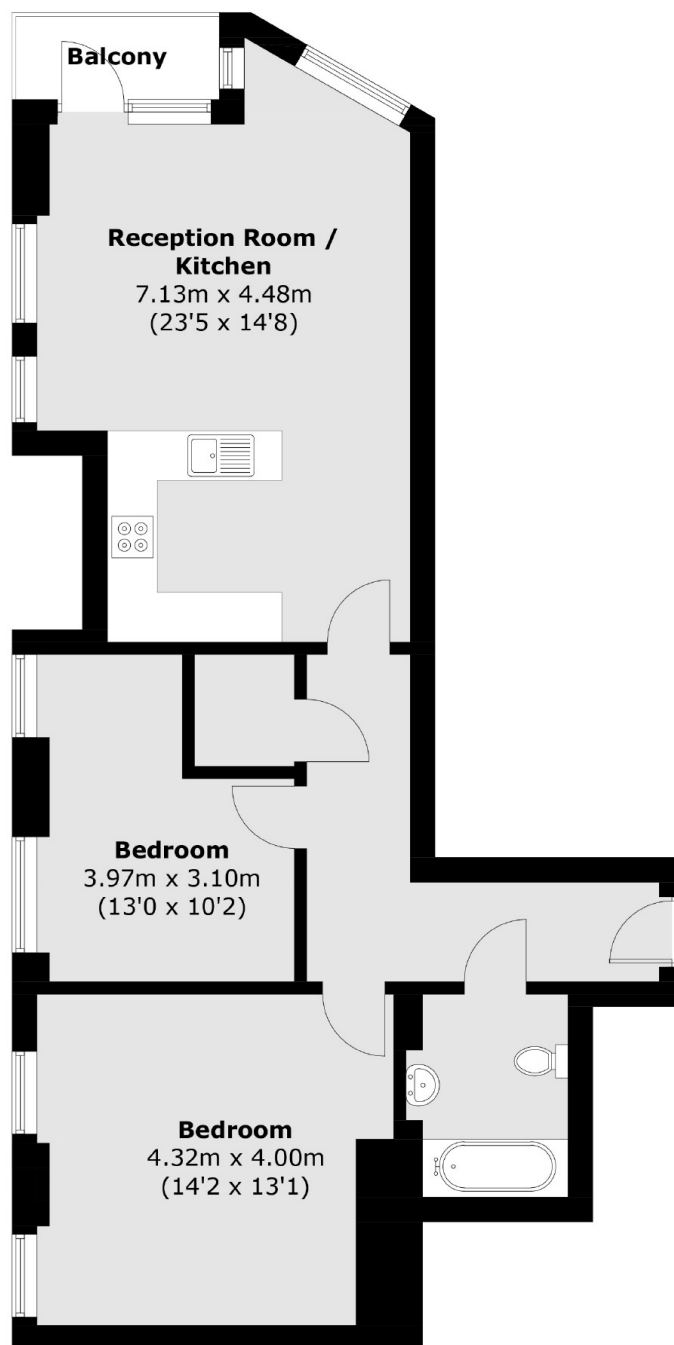
A two bedroom apartment located in Parliament House adjacent to Albert Embankment. The property is well presented and in excellent condition offering a modern bathroom, a private balcony, a concierge and a resident's gym.

Parliament House is located a moments walk to the River, Westminster, Waterloo and within walking distance to Prime Central London. The flat is situated close to Vauxhall Tube and National rail stations.

Features

- Two Double Bedrooms
- Modern Bathroom
- Great Storage
- Private Balcony
- Furnished
- Sixth Floor

Black Prince Road, London, SE1



Total area (approx.): 70.7 sq. m (761.0 sq. ft)
Balcony: 2.4 sq. m (25.8 sq. ft)