



Twyford Avenue, W3 £425,000

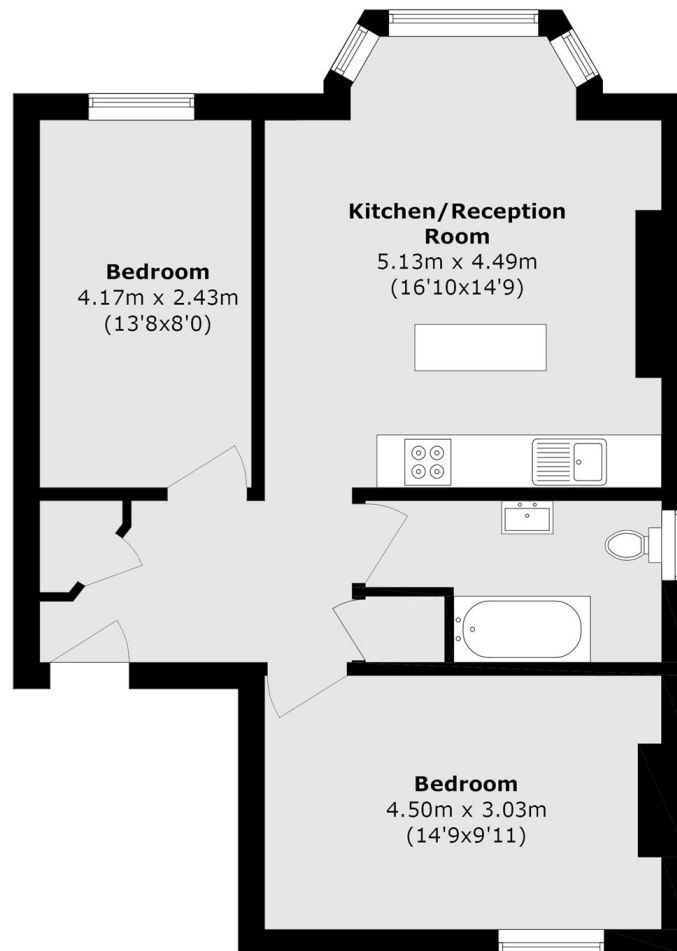
A first-floor, two double bedroom Edwardian conversion, ideally situated on the borders of Ealing Common. This bright and spacious property is filled with natural light and benefits from high ceilings and charming period features throughout. The property also offers a share of the freehold and is available with no onward chain.

Twyford Avenue is within half a mile to both the West Acton and Ealing Common Station, it is also located near Twyford School which is in a great catchment for families.

Features

- Two Bedroom
- Period Conversion
- Share of Freehold
- Close To Twyford School
- Ealing Common Borders
- No Onward Chain

Twyford Avenue, London, W3



Total area (approx.): 59.2 sq. m (637.2 sq. ft)