



# 108 Endeavour Court,

Stoke, Plymouth, PL1 5AX

- Modern Apartment
- Two Double Bedrooms
- Open Plan Living
- Modern Fitted Kitchen
- En-Suite Shower room
- Covered Balcony
- Close to Amenities
- Good Size Storage Facility
- Generous Garage Parking
- Sought After Location

## LOCATION

The property is situated in Endeavour Court, just off Valletort Road which is an attractive treelined avenue in the popular Stoke area of Plymouth.

Located near to Stoke Village, with its wide range of amenities including local shops, restaurants. There is a regular bus service into Plymouth city centre and Devonport Park is within walking distance. The city centre is only a mile away with an excellent range of shops including Drake Circus shopping complex together with the nationally renowned Theatre Royal and the historic Barbican with its fine array of restaurants, cafes, bars and bespoke boutiques.

## DESCRIPTION

Secure entry gives access to the communal hallway with a door leading to the garage area and stairs leading to the apartment.

Located on the 2nd floor, the apartment comprises an



This fantastic two bedroom apartment situated in the much sought after location of Stoke offering open plan living, modern kitchen and garage parking.





L-shaped entrance hall with door to a useful storage cupboard and doors to principal rooms.

The living room is open plan to the kitchen and is double aspect with windows to the rear and glazed door to the balcony. The well equipped kitchen boasts base and wall units with dark work surfaces over and integrated appliances including oven, gas hob with cooker hood over and fridge/freezer.

Both bedrooms are doubles with the master benefiting from an en-suite shower room. The family bathroom offers a contemporary white suite comprising panel bath with shower over, wash hand basin and WC.

#### OUTSIDE

From the open plan living room there is a good size covered balcony. The property benefits from a large storage area within the undercroft garaging.

#### TENURE & SERVICES

Tenure: Leasehold

Services: Mains gas, electricity, water and drainage.

Service Charge: £935.00 per annum.

Ground Rent: £225.00 per annum.

Council Tax: Band B

EPC: B

ASKING PRICE: £150,000



## 108 Endeavour Court

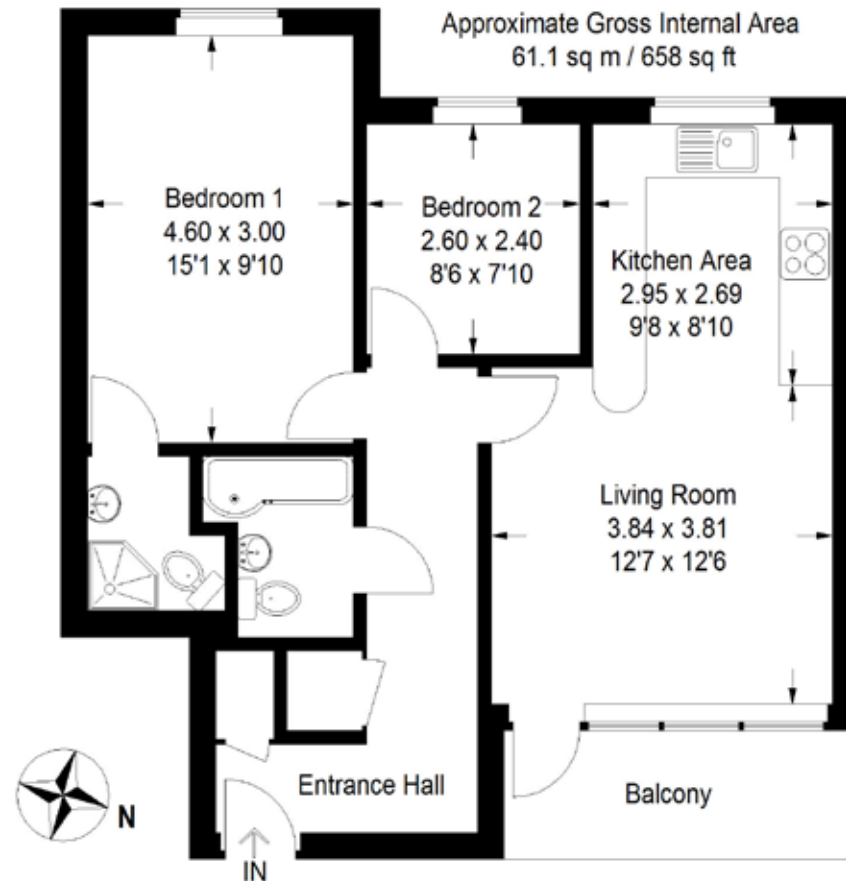


Illustration for identification purposes only, measurements are approximate, not to scale.  
FloorplansUsketch.com © 2018 (ID 430698 )



65 Southside Street  
The Barbican  
Plymouth PL1 2LA  
01752 202121  
plymouthsales@atwellmartin.co.uk  
www.atwellmartin.co.uk

Associated London office in Park Lane W1

These particulars whilst believed to be accurate are to be set out as a general outline only for guidance and do not constitute any part of an offer or contract. Intending purchasers should not rely on them as statements of representation of fact, but must satisfy themselves by inspection or otherwise as to their accuracy. No person in the employment of Atwell Martin has the authority to make or give any representation or warranty in respect of the property.