

**1 Bed  
Apartment  
located in**

**AiHOMES.**

# Modern 1B1B Apartment | Elizabeth Tower | Manchester M15|222650ET



£315,000

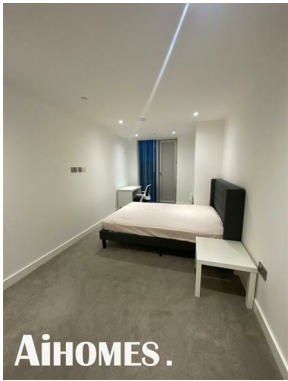
Welcome to this modern one-bedroom, one-bathroom apartment located in the prestigious Elizabeth Tower, situated in the vibrant heart of Manchester. Spanning an impressive 614 square feet, this property offers a perfect blend of contemporary living and urban convenience.

As you enter the apartment, you will be greeted by a spacious and well-designed layout that maximises natural light, creating a warm and inviting atmosphere. The living area is ideal for both relaxation and entertaining, providing ample space for comfortable furnishings. The modern kitchen is equipped with high-quality appliances, making it a delight for any home cook.

The bedroom is generously sized, offering a peaceful retreat at the end of the day, while the bathroom features modern fixtures and finishes, ensuring a stylish and functional space.

With a lease term of 999 years and 992 years remaining, this property presents a fantastic opportunity for both first-time buyers and investors alike. The Elizabeth Tower is not only a striking architectural landmark but also places you within easy reach of Manchester's bustling city centre, with its array of shops, restaurants, and cultural attractions.

This apartment is perfect for those seeking a contemporary lifestyle in one of the UK's most dynamic cities. Don't miss the chance to make this exceptional property your new home.

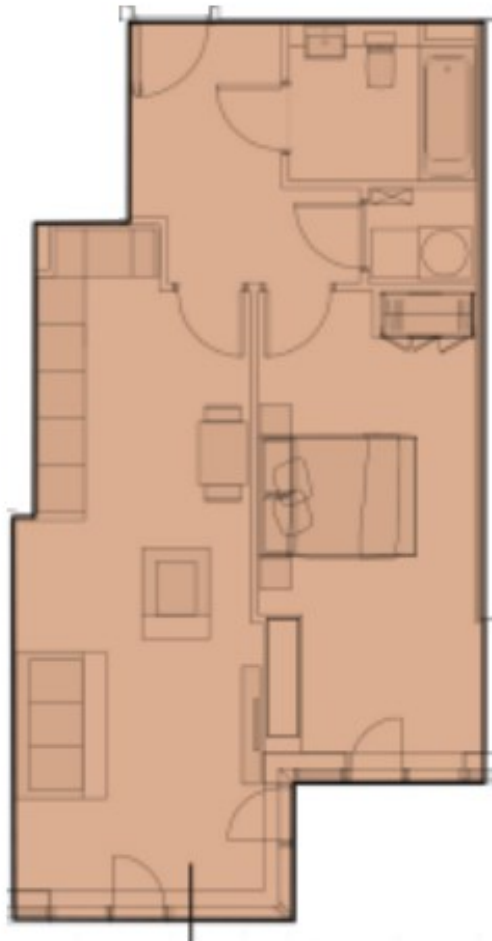







**Modern 1B1B Apartment | Elizabeth Tower | Manchester**  
**M151222650ET**





Energy Efficiency Rating		
	Current	Potential
<i>Very energy efficient - lower running costs</i>		
(92 plus) <b>A</b>		
(81-91) <b>B</b>		
(69-80) <b>C</b>		
(55-68) <b>D</b>		
(39-54) <b>E</b>		
(21-38) <b>F</b>		
(1-20) <b>G</b>		
<i>Not energy efficient - higher running costs</i>		
<b>England &amp; Wales</b>	EU Directive 2002/91/EC	

**EPC Rating:**  
**Council Tax Band: C**

**CONTACT**

5th floor, Empress Business Center  
380 Chester Road  
Manchester  
M16 9EA

E: [info@aihomes.uk](mailto:info@aihomes.uk)

T: 0127 332 8069

**AiHOMES.**