

Ist Call

SALES AND LETTINGS



Alexandra Road, Southend-On-Sea, SS1 1HE

Offers Over £240,000

This spacious two double bedroom second floor apartment is situated in a great location being just yards from the Cliff gardens overlooking the estuary and within easy access of the city centre and rail stations. Offering a spacious open plan living space and kitchen with integrated appliances, two double bedrooms with an en suite to the master as well as a modern bathroom. With two balconies, one front and one rear, and a secure allocated parking space the property also benefits from lift access and a large communal roof terrace for the use of all residents. With a motivated seller, we believe the property has been competitively priced and we would recommend viewing.

Accommodation Comprising

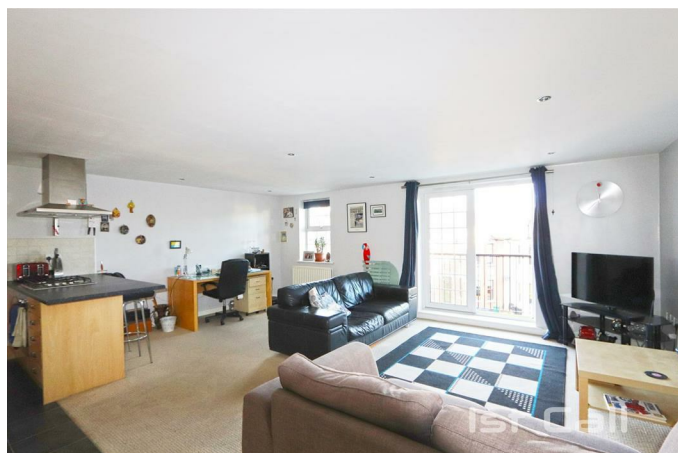
Front door with security entryphone system leading to communal entrance lobby with lift and stairwell access to the second floor landing. Own front door to...

Entrance Hall



Radiator, two large built in storage cupboards, smooth plastered ceiling with inset spotlights, doors off to...

Open Plan Lounge/ Dining/ Kitchen Space 20'5 x 19'7 (6.22m x 5.97m)



Living Area

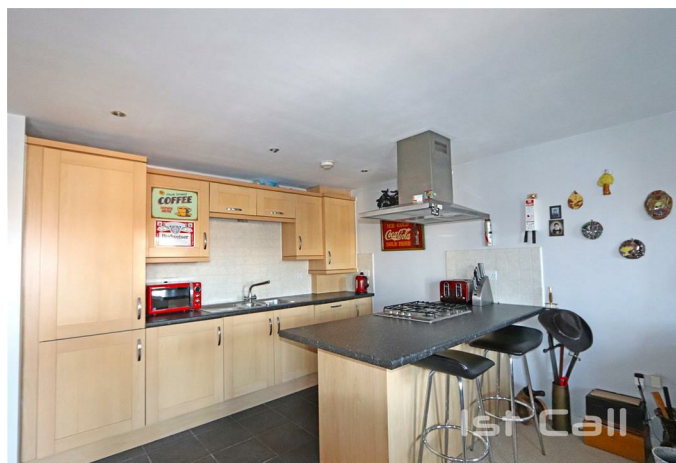


Double glazed window to front, double glazed

french doors providing access to front balcony with wrought iron balustrade, two radiators, smooth plastered ceiling with inset spotlights, open plan to...



Kitchen Area



Range of modern fitted base units with toning roll edged working surfaces over, inset single drainer stainless steel sink unit, breakfast bar with integrated stainless steel gas hob, oven and matching extractor hood, integrated fridge/ freezer, washing machine and dishwasher, matching range of wall mounted units, smooth plastered ceiling with inset spotlights...

Bathroom 8'1 x 5'8 (2.46m x 1.73m)



Modern white suite comprising panelled bath with mixer tap and shower attachment, glazed shower screen, vanity wash hand basin, low level W.C., heated towel rail, tiled splashbacks and flooring, smooth plastered ceiling with inset spotlights and extractor fan...

Bedroom 1 11'7 x 9'1 (3.53m x 2.77m)



Double glazed window and door to rear south facing balcony with wrought iron balustrade, radiator, built in wardrobe cupboard, smooth plastered ceiling, door to...



En Suite 6'8 x 4'9 (2.03m x 1.45m)



Modern white suite comprising enclosed shower cubicle, vanity wash hand basin, low level W.C, heated towel rail, electric shaver point, tiled splashbacks and flooring, smooth plastered ceiling with inset spotlights, obscure double glazed window to side...

Bedroom 2 11' x 8'1 (3.35m x 2.46m)



Double glazed window to rear, radiator, smooth plastered ceiling...



Communal Roof Terrace



Externally



Large timber decked south facing roof terrace for the use of residents...

Leasehold Information

Remaining Lease Term - 105 years

Annual Ground Rent - £250

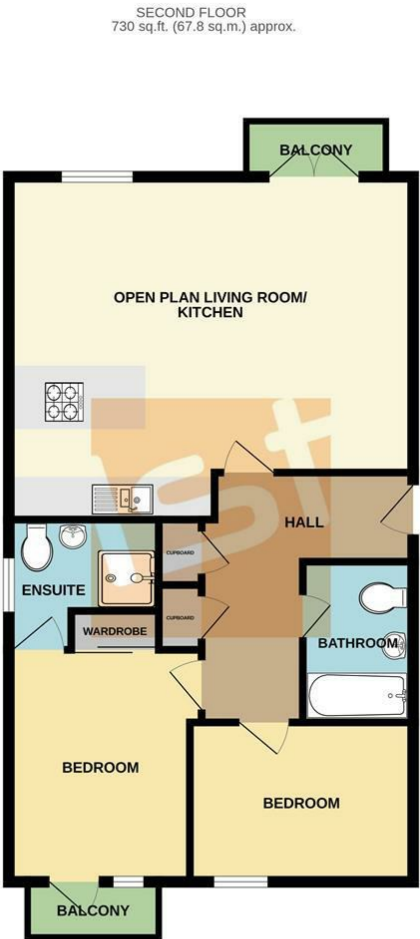
Annual Service Charge - £2112

Parking



Allocated parking space within secure residents gated car park, further secure bicycle storage...

Floor Plan



TOTAL FLOOR AREA: 730 sq.ft. (67.8 sq.m.) approx.

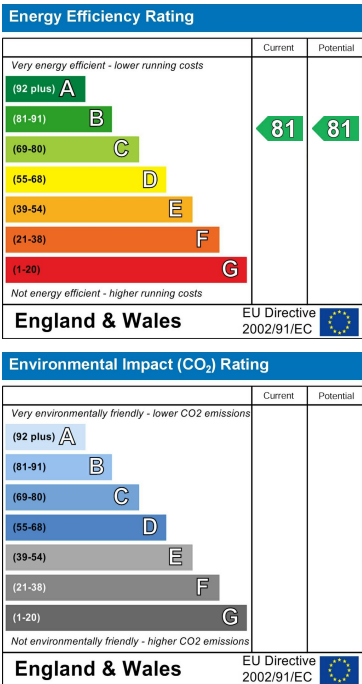
Whilst every attempt has been made to ensure the accuracy of the floorplan contained here, measurements of doors, windows, rooms and any other items are approximate and no responsibility is taken for any error, omission or mis-statement. This plan is for illustrative purposes only and should be used as such by any prospective purchaser. The services, systems and appliances shown have not been tested and no guarantee as to their operability or efficiency can be given.

Made with Metropix ©2024

Area Map



Energy Efficiency Graph



These particulars, whilst believed to be accurate are set out as a general outline only for guidance and do not constitute any part of an offer or contract. Intending purchasers should not rely on them as statements of representation of fact, but must satisfy themselves by inspection or otherwise as to their accuracy. No person in this firm's employment has the authority to make or give any representation or warranty in respect of the property.