



Luscombe Maye
Since 1873

8 Hunters Moon, Dartington

£650,000

🛏 3 🚿 2 🛋 3



DESCRIPTION Luscombe Maye are delighted to bring to market this extended linked detached three/four bedroomed house offering the perfect blend of modern living and countryside charm. Situated in a peaceful position with a delightful outlook onto a well-maintained green, this property is ideal for families, professionals, or those seeking a tranquil lifestyle within easy reach of Totnes and surrounding amenities. Stepping into the property, the spacious entrance hall opens into the open-plan kitchen and living space, thoughtfully designed for contemporary living and entertaining. The stylish kitchen features modern cabinetry, ample worktop space, and integrated appliances, flowing seamlessly into the dining all bathed in natural light from large windows and patio doors that open onto the rear garden. The lounge enjoys dual aspect windows and wraps back to the entrance hall. There is a downstairs bedroom that would also be a useful study room. Upstairs, you'll find two well-proportioned double bedrooms, including a generous main bedroom with rooftop terrace enjoying far reaching countryside views to the moors. The family bathroom features WC, hand basin and bath with shower above. Outside, the private garden provides a lovely space for relaxing or alfresco dining, with access to the communal green, creating a real sense of space and community. Additional benefits include the garage space that has been part converted to an annexe with shower and sink unit currently used as a utility room but could easily be converted into an additional living space or bedroom. The property enjoys driveway parking and is situated in the quite cul-de-sac of Hunters Moon. Located just a short distance from Dartington Hall Estate, local shops, schools, and scenic walks, this home offers a rare opportunity to enjoy village life in one of South Devon's most desirable locations.

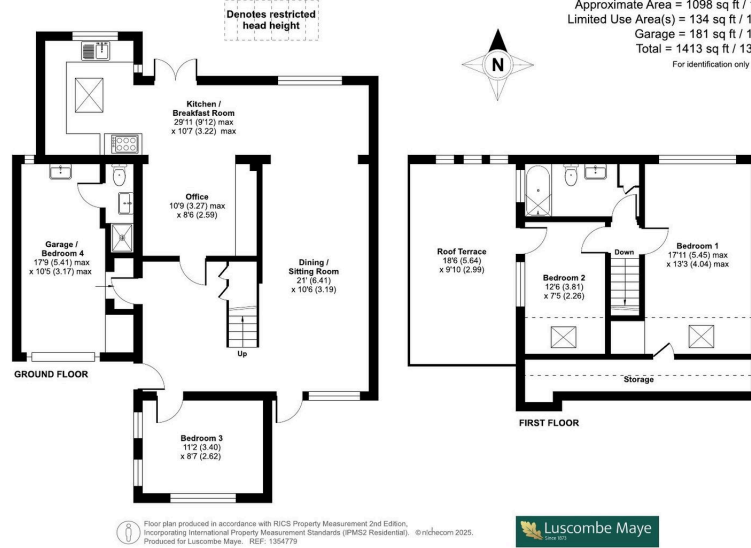
FURTHER INFORMATION

To ensure legal compliance, we require our sellers to complete a Property Information Questionnaire or provide a Material Information Guide along with the title document. If available, please scan the QR code or access the additional online material information (<https://moverly.com/sale/AJBNz6RYqrhF4b9hy3FAWN/view>). Alternatively, you can contact our team for this information.



Hunters Moon, Dartington, Totnes, TQ9

Approximate Area = 1098 sq ft / 102 sq m
Limited Use Area(s) = 134 sq ft / 12.4 sq m
Garage = 181 sq ft / 16.8 sq m
Total = 1413 sq ft / 131.2 sq m
For identification only - Not to scale



- Extended Link Detached House
- Garden Backing onto Green
- Far Reaching Countryside views
- Three Bedrooms with Potential for Fourth
- Roof Terrace
- Highly Desirable Location

 **Luscombe Maye**
Since 1873



Use the QR code for further "Material Information" about this home

