



Craignair Avenue, Brighton, BN1 8UG

welcome to

Craignair Avenue, Brighton

A Beautiful 1930s Five-Bedroom Semi-Detached Home with West-Facing Garden & Stunning Far-Reaching Views



Nestled on a sought-after residential road, this charming five-bedroom 1930s semi-detached home blends period character with generous family living. From its handsome bay-fronted façade to its thoughtfully arranged accommodation, the property offers both warmth and practicality throughout.

Inside, you are welcomed by a spacious hallway leading to expansive and elegant reception rooms, each featuring classic 1930s proportions and abundant natural light. The rear living space opens onto the garden, creating a seamless flow ideal for relaxed family time or entertaining.

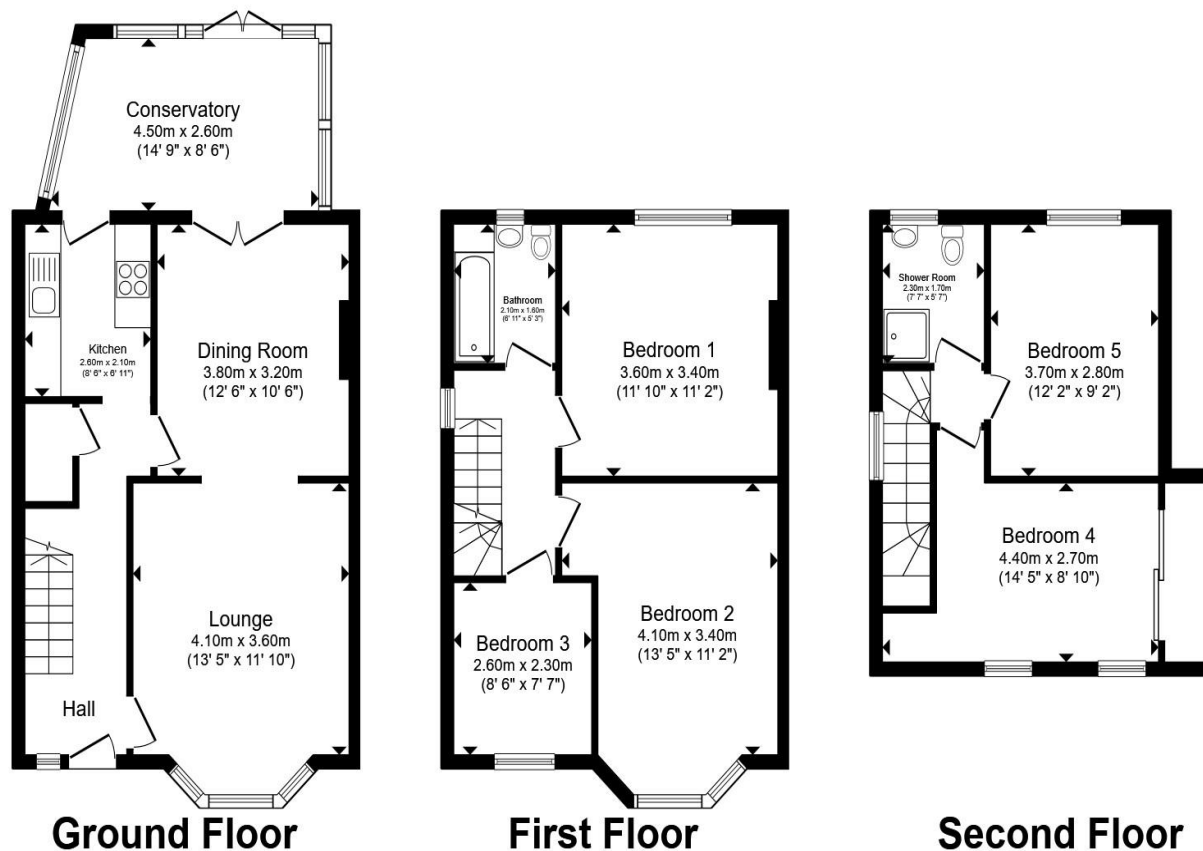
The well-appointed kitchen provides ample worktop and storage space, with scope for modernisation or extension (STPP) to create a contemporary open-plan area.

Across the upper floors are five well-sized bedrooms, making the home perfectly suited for a growing family, guests, or home-working setups. Many rooms enjoy elevated, far-reaching views—one of the property's most striking features.

Outside, the west-facing garden is a highlight. Bathed in afternoon and evening sunshine, it offers a tranquil retreat with room for outdoor dining, children's play, or gardening enthusiasts. The open outlook provides a wonderful sense of light and space rarely found in such a convenient location.

Further benefits include off-street parking, period detailing, and excellent potential to personalise or enhance.

A superb opportunity to secure a substantial family home with character, exceptional views, and room to grow.



Total floor area 132.9 m² (1,430 sq.ft.) approx

This floor plan is for illustrative purposes only. It is not drawn to scale. Any measurements, floor areas (including any total floor area), openings and orientation are approximate. No details are guaranteed, they cannot be relied upon for any purpose and they do not form part of any agreement. No liability is taken for any error, omission or misstatement. A party must rely upon its own inspection(s). Powered by www.propertybox.io

welcome to Craignair Avenue, Brighton

- EXPANSIVE 1930's CHARACTER FILLED HOME
- 5 BEDROOMS
- 2 BATHROOMS
- BEAUTIFUL WEST FACING REAR GARDEN
- OFF ROAD PARKING
- VENDOR SUITED
- SOUGHT AFTER PATCHAM LOCATION
- EASY ACCESS TO A23 AND A27

Tenure: Freehold EPC Rating: C
Council Tax Band: D

£590,000



Please note the marker reflects the postcode not the actual property

view this property online fox-and-sons.co.uk/Property/PRP106873



Property Ref:
PRP106873 - 0005

1. MONEY LAUNDERING REGULATIONS Intending purchasers will be asked to produce identification documentation at a later stage and we would ask for your co-operation in order that there is no delay in agreeing the sale. 2. These particulars do not constitute part or all of an offer or contract. 3. The measurements indicated are supplied for guidance only and as such must be considered incorrect. Potential buyers are advised to recheck measurements before committing to any expense. 4. We have not tested any apparatus, equipment, fixtures or services and it is in the buyers interest to check the working condition of any appliances. 5. Where an EPC, or a Home Report (Scotland only) is held for this property, it is available for inspection at the branch by appointment. If you require a printed version of a Home Report, you will need to pay a reasonable production charge reflecting printing and other costs. 6. We are not able to offer an opinion either written or verbal on the content of these reports and this must be obtained from your legal representative. 7. Whilst we take care in preparing these reports, a buyer should ensure that his/her legal representative confirms as soon as possible all matters relating to title including the extent and boundaries of the property and other important matters before exchange of contracts.


fox & sons



01273 508761



PrestonPark@fox-and-sons.co.uk



205 Preston Road, BRIGHTON, East Sussex,
BN1 6SA



fox-and-sons.co.uk