



Willesden Lane, Kilburn, NW6  
£2,900 pcm

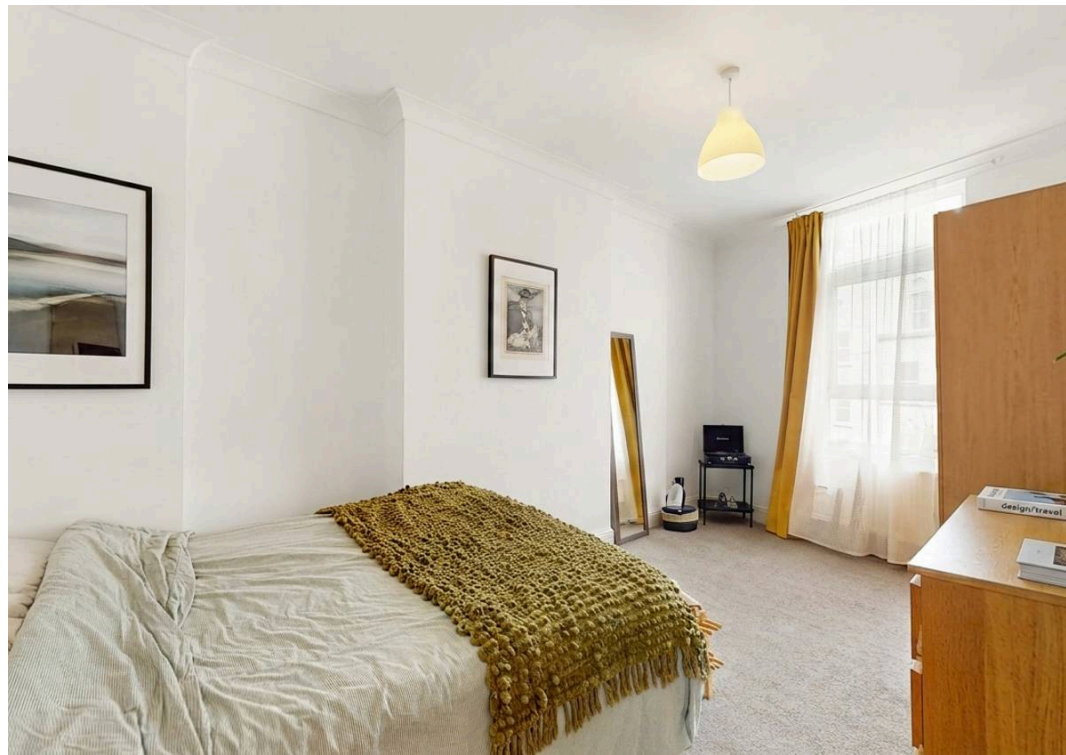
## Willesden Lane, Kilburn, NW6

We are happy to present this lovely three double bedroom apartment located in Brondesbury area. The flat benefits from excellent condition throughout with a good size open plan reception room with fully fitted kitchen, spacious lounge, three double bedrooms and modern shower room.

We are happy to present this lovely three double bedroom apartment located in Brondesbury area. The flat benefits from excellent condition throughout with a good size open plan reception room with fully fitted kitchen, spacious lounge, three double bedrooms and modern shower room.

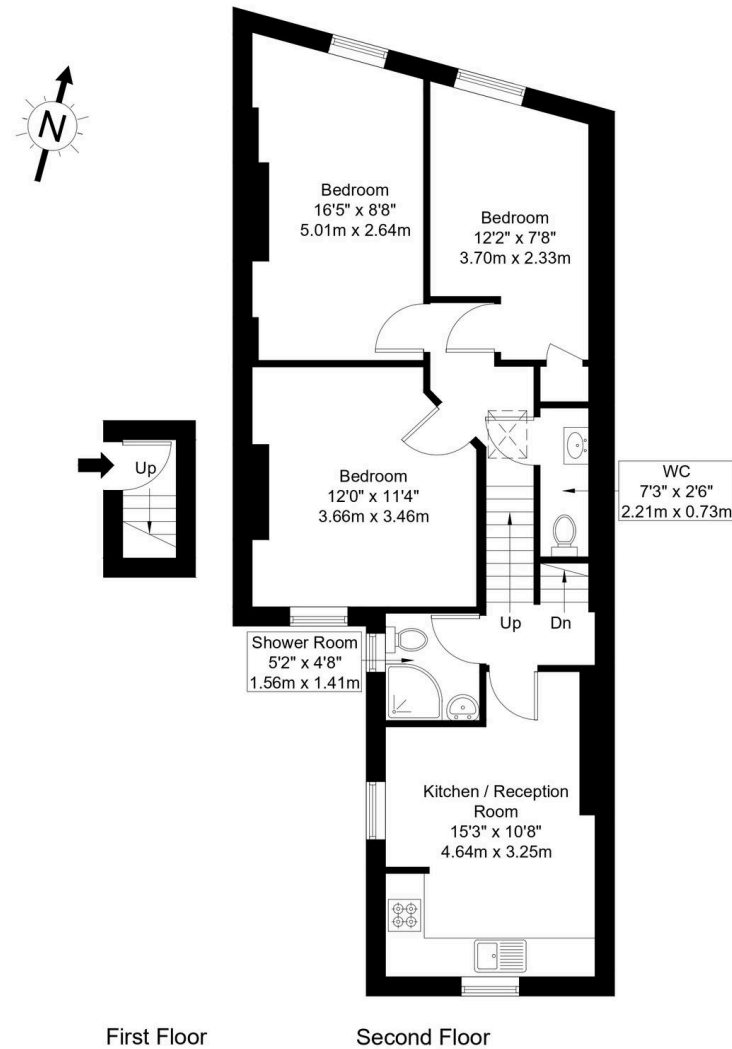
All local amenities and public transport are moments away





# Willesden Lane, NW6 7RR

Approx Gross Internal Area = 62.6 sq m / 674 sq ft



Ref :

Copyright **BLEU PLAN**

The Floor plan is not to scale and measurements and areas shown are approximate and therefore should be used for illustrative purposes only. The plan has been prepared in accordance with the RICS code of Measuring Practice and whilst we have confidence in the information produced it must not be relied on. Maximum lengths and widths are represented on the floor plan. If there is any aspect of particular importance, you should carry out or commission your own inspection of the property.  
Copyright @ BleuPlan



## Black Katz

22 West Hampstead Mews, London - NW6 3BB

02073285000 • [Thomas@blackkatz.com](mailto:Thomas@blackkatz.com) • [blackkatz.com/](http://blackkatz.com/)