



59 High Street

Corby, NN17 3DF



Simpson West

This charming, stone-built, extended cottage is set in the highly sought-after village of Gretton. Offered to the market in move in condition and with no onward chain, the property is conveniently located to enjoy the village amenities.

The accommodation is accessed via a low maintenance garden that has been thoughtfully landscaped to provide a peaceful and private outdoor space, with decking, patio and mature borders. The ground floor comprises a kitchen and a lounge/diner with a feature fireplace, a staircase rising to the first floor, and a large storage cupboard beneath, providing ample space for coats, shoes, and other everyday items.

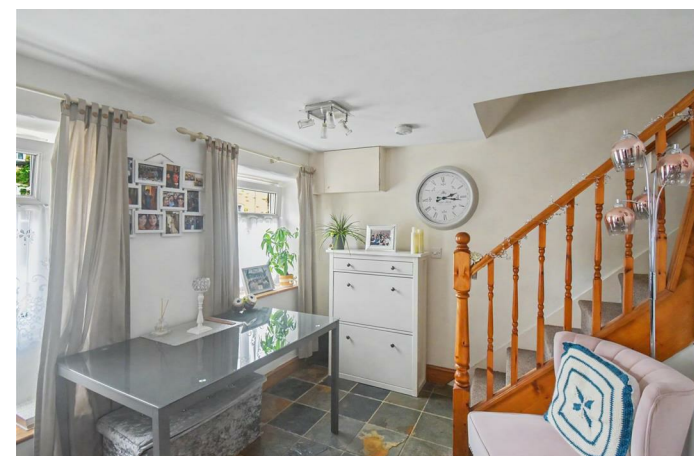
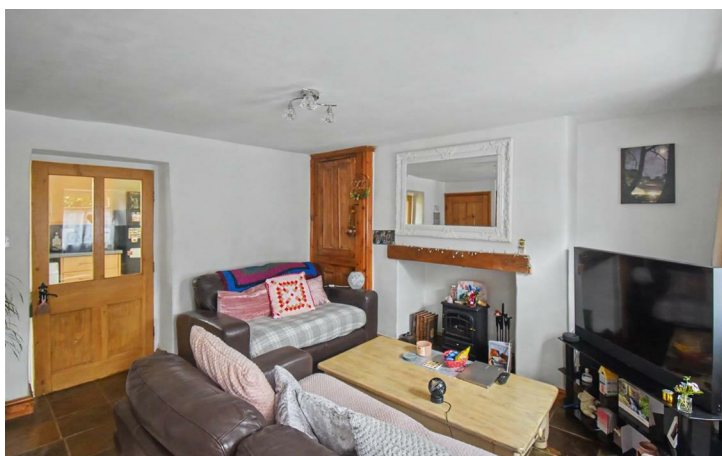
On the first floor, the landing leads to two bedrooms, with the principal bedroom benefiting from a walk-in wardrobe. Both bedrooms are served by a family bathroom.

This property is highly suited to first time buyers or investors alike.

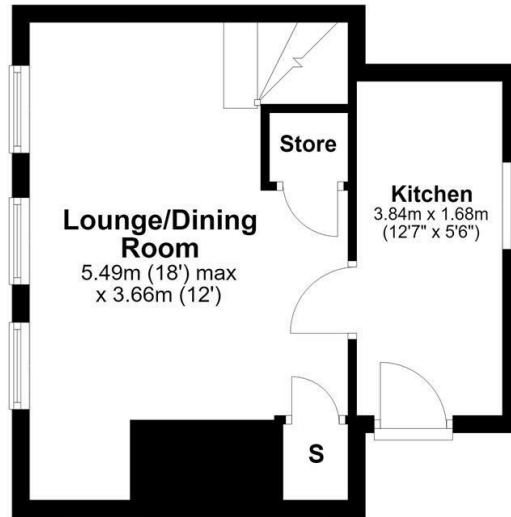
EPC Rating: D. Council Tax Band: B.

£230,000

 2  1  1



Ground Floor



First Floor



Energy Efficiency Rating

	Current	Potential
<i>Very energy efficient - lower running costs</i>		
(92 plus) A		
(81-91) B		
(69-80) C		
(55-68) D		
(39-54) E		
(21-38) F		
(1-20) G		
<i>Not energy efficient - higher running costs</i>		
England & Wales	EU Directive 2002/91/EC	



When you buy with Simpson West, you know **you'll be in safe hands**. From the moment you walk through our doors, we'll make you **feel truly welcome**. Our sales consultants and financial advisors will take you through **every step of the process**, offering **free expert advice** along the way, from help choosing the right mortgage and insurance through to finding your conveyancer. And if you need help selling your home too, **with over 20 years of local experience, you can trust us to get you moving**.



**Simpson
West**

Making Every
Journey Personal



01536 202007

info@simpsonwest.co.uk

<https://www.simpsonwest.co.uk/>

64 Corporation Street, Corby, Northants, NN17 1NH