



ADDISON ROAD LONDON W14  
£7,000 PER WEEK AVAILABLE 27/08/2026




Hamptons

THE HOME EXPERTS

# { THE PARTICULARS

Addison Road London W14

£7,000 Per Week  
Furnished

 5 Bedrooms  
 4 Bathrooms  
 2 Receptions

## Features

- Five Bedrooms, - Four Bathrooms, - Guest  
Cloakroom, - Double Reception, -  
Integrated Media System, - Balcony, -  
Large Landscaped Garden, - Garage with  
two spaces, - Bills included (except council  
tax), - Furnished  
Council Tax  
Council Tax Band H

Hamptons  
8 Hornton Street  
Kensington, London, W8 4NW  
020 7937 9372  
KensingtonLettings@hamptons.co.uk  
www.hamptons.co.uk

# { A PHENOMENAL FIVE BEDROOM HOME WITH LARGE GARDEN AND PARKING

## The Property

A phenomenal five bedroom home on this prestigious road in Kensington. The house comprises large double reception room on the raised ground floor with space for dining and bar area. There is a pretty balcony with access down to the patio and stunning views across the large beautifully landscaped garden. On the lower floor there is a beautiful fully fitted kitchen, second reception room and patio doors out to the garden. There is a bedroom/study and shower room. On the first and second floors are four bedrooms, two en-suite bathrooms and a family shower room. The house benefits from a garage with two car spaces and off street parking at the rear of the property with access to the garden. Offered furnished. \*\* Available until the end of April 2027\*\* The rent includes all bills with the exception of the council tax.

## Location

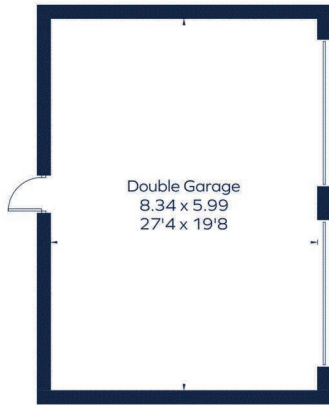
Addison Road is located close to the open spaces of Holland Park and the amenities of Kensington High Street.



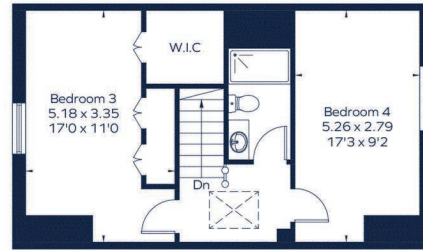
# ADDISON ROAD

Approximate Gross Internal Area

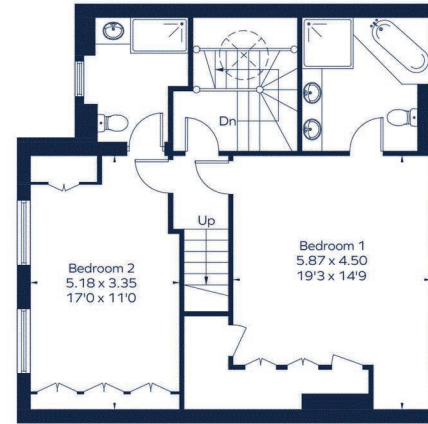
4261 sq. ft. (396 sq. m.)



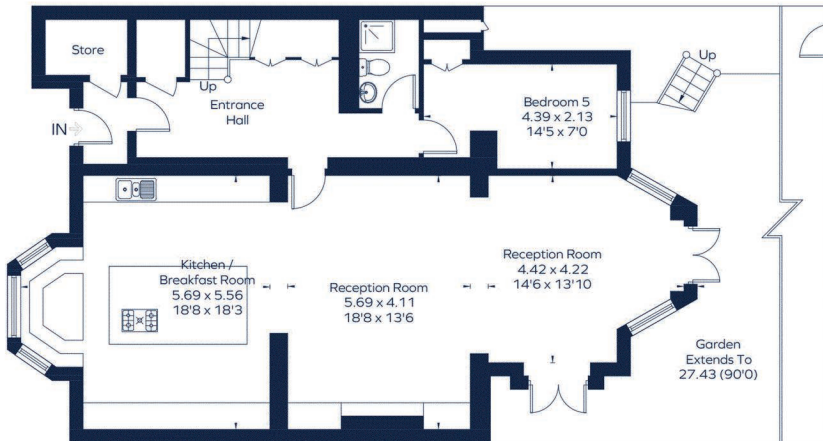
(Not Shown In Actual Location / Orientation)



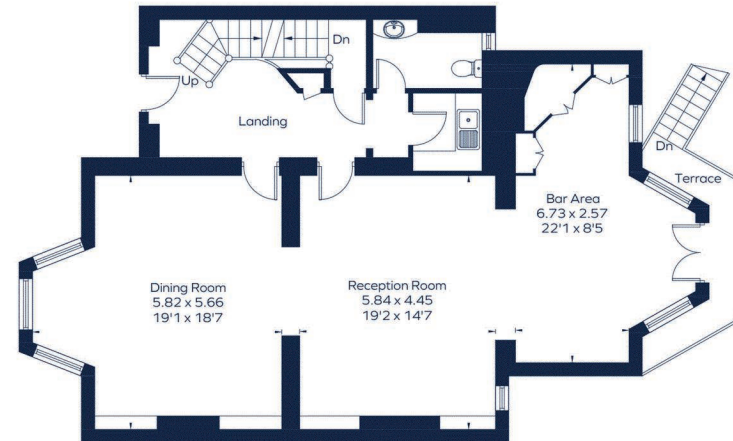
Second Floor



First Floor



Lower Ground Floor



Ground Floor

Drawn for illustration and identification purposes only.  
ID 992982

## For Clarification

We wish to inform prospective tenants that we have prepared these particulars as a general guide and they have been confirmed as accurate by the landlord. We have not verified permissions, nor carried out a survey, tested the services, appliances and specific fittings. Room sizes are approximate and measurement figures rounded: they are taken between internal wall surfaces and therefore include cupboards/shelves, etc. Accordingly, they should not be relied upon for

carpets and furnishings. It should also be noted that all fixtures and fittings, carpeted, curtains/blinds, kitchen equipment and garden statuary, whether fitted or not, are deemed removable by the landlord unless specifically itemised with these particulars. Please enquire in office or on our website for details on holding deposit and tenancy deposit figures.

Energy Efficiency Rating		Current	Potential
Very Energy Efficient (A)			
Energy Efficient (B)			
Decent (C)			
Needs Improvement (D)			
Some Improvements Needed (E)		56	72
Urgent Improvements Needed (F)			
Very Poor (G)			

EU Directive 2002/91/EC

