

FLETCHERS

ESTATE AGENTS



Davis Road, W3

£1,200,000

In this popular residential enclave, only a short walk from the great selection of independent traders along Askew Road. A lovely and well proportioned bay fronted family house, with good entertaining space, and a kitchen/breakfast room leading to a walled rear garden.



In this popular residential enclave, only a short walk from the great selection of independent traders along Askew Road. A lovely and well proportioned bay fronted family house, with good entertaining space, and a kitchen/breakfast room leading to a walled rear garden.

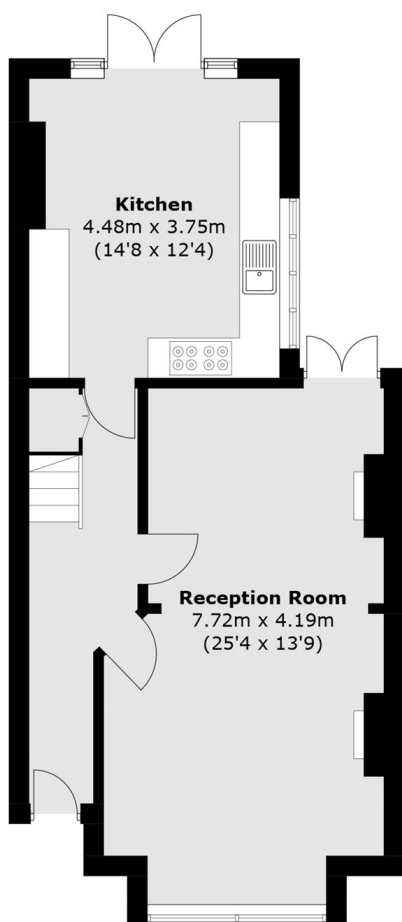
Davis Road is in a good spot within walking distance of the local shopping and restaurant facilities on Askew Road, Wendell Park Primary School, and a short bus ride to Shepherds Bush with the extensive range of shops at Westfield shopping centre.

- Four Double Bedrooms • Family Bathroom • Shower Room •
- Double Reception Room • Kitchen/Breakfast Room • Walled Garden •
- Chain Free •

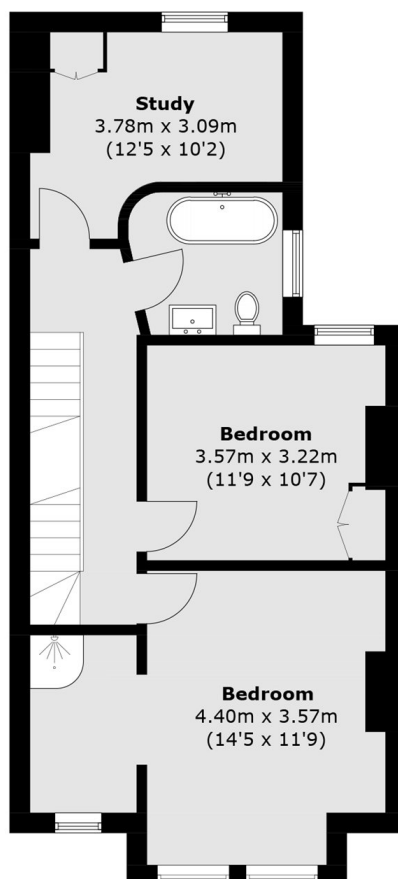


FLETCHERS

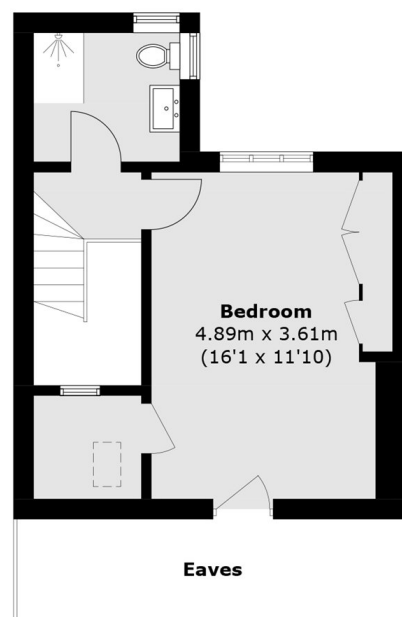
ESTATE AGENTS



Ground Floor



First Floor



Second Floor

Total area (approx.): 143.5 sq. m (1,544.6 sq. ft)
(Excluding Eaves)

Fletchers Chiswick Turnham Green Sales
58 Turnham Green Terrace
London
W4 1QP
020 8987 3000
chiswicksales@fletcherestates.com

Energy Rating: C We aim to make our particulars both accurate and reliable. However they are not guaranteed; nor do they form part of an offer or contract. If you require clarification on any points then please contact us, especially if you're traveling some distance to view. Please note that appliances and heating systems have not been tested and therefore no warranties can be given as to their good working order