



21, Fair Maid, Sampford Peverell

Tiverton

£699,995



## 21, Fair Maid

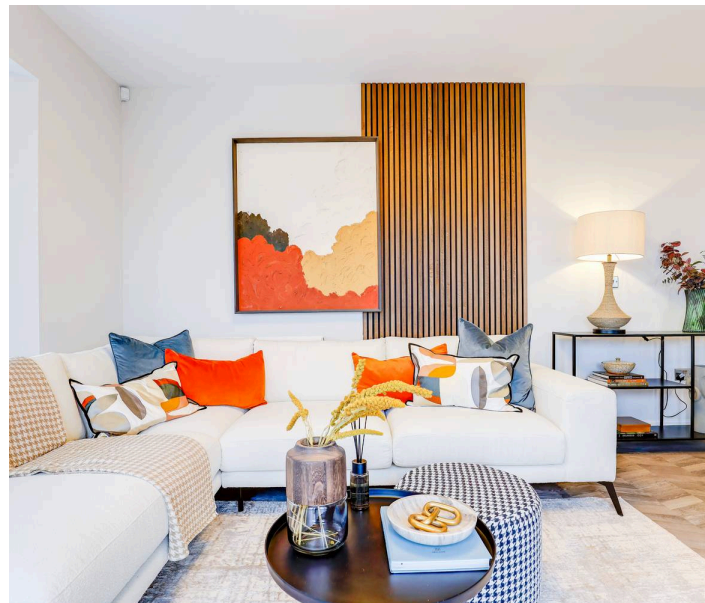
Sampford Peverell, Tiverton

Plot 44 - The Peverell. - A Spacious 5-bed detached home at The Orchards with double garage, EV charging, solar panels, luxury suite, and modern features. Chain free or part exchange. NHBC warranty.

Council Tax band: TBD

Tenure: Freehold

- Plot 44 - The Peverell - The Orchards Development
- Award winning development by Edenstone Homes, The Orchards
- EPC A rated for energy efficiency
- NHBC warranty
- Solar Panels and EV charging point
- 5 bedrooms including a walk through dressing room & en suite.
- Double garage with space for four cars on the driveway
- Chain free or part exchange available
- Front of the property overlooks the pavilion and village square





### **Kitchen/Utility**

Spacious kitchen located on the ground floor towards the rear of the property. Stylish design with ample storage, built in dishwasher and double oven with direct access to the utility

### **Dining**

Located towards the rear the of the property, the space has bi fold doors opening up onto the patio which allow natural light to flow through the room.

### **Family**

Spacious room adjoining the kitchen dining area, a perfect hosting facility.

### **Lounge**

Located on the ground floor towards the front of the property.

### **Study**

Located on the ground floor towards the front of the property, perfect if you work from home or wish to create a ground floor play area.

### **w/c**

Located on the ground floor & accessed off the hallway.

### **Landing**

Spacious area with direct access to all bedrooms and the bathroom

### **Principal bedroom**

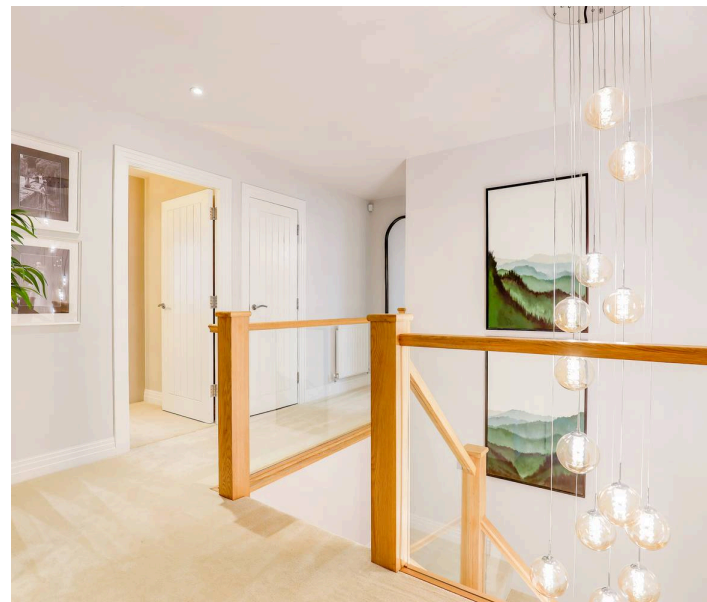
Spacious double bedroom located on the first floor, the room comes with an adjacent dressing room & En Suite.

### **Dressing room**

Located on the first floor with direct access from the principal bedroom

### **En-suite 1**

Grand en suite, located on the first floor with direct access to the principal bedroom.





# The Orchards

PART EXCHANGE  
WEEKEND

9/10 May

*Save the date!*

## REAR GARDEN

Accessed through the bifold doors

## GARAGE

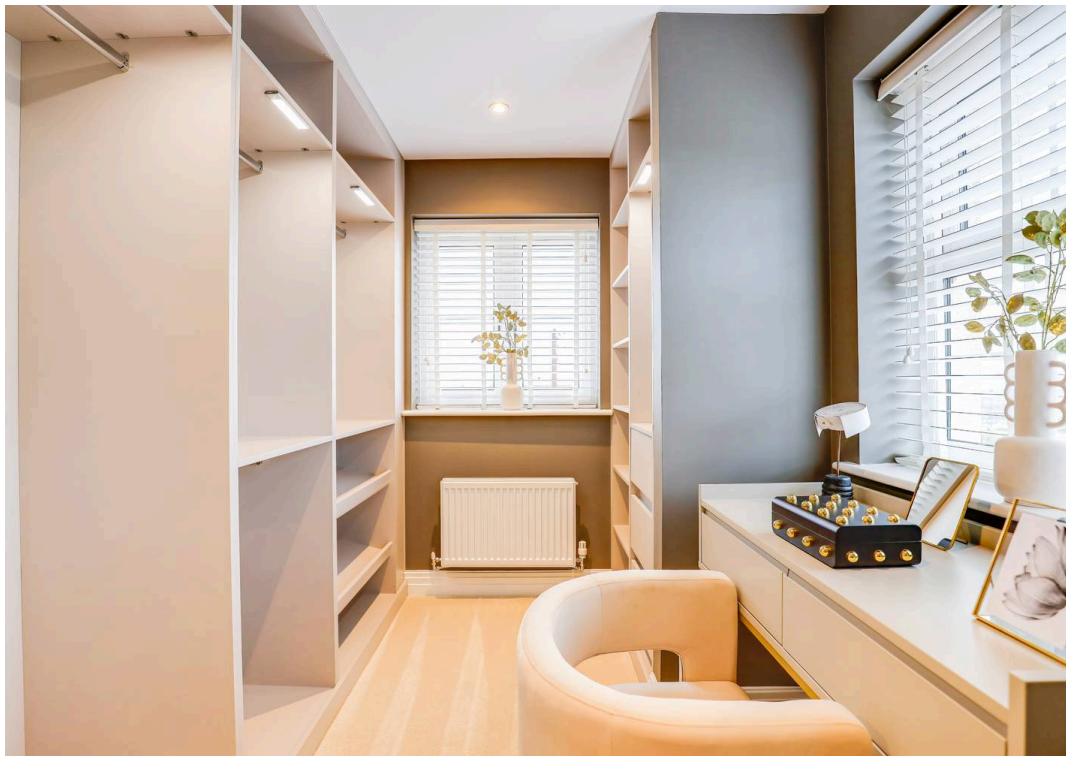
Double Garage

Detached double garage & driveway for 4 cars

## DRIVEWAY

4 Parking Spaces

Driveway for four cars in front of garage





## THE PEVERELL

A FIVE BEDROOM DETACHED HOME



### GROUND FLOOR

Kitchen	3.48m x 3.46m	12' x 11'
Dining	3.29m x 3.59m	11' x 12'
Family	5.48m x 5.40m	18' x 18'
Lounge	4.90m x 4.22m	16' x 14'
Wc	3.82m x 3.02m	12' x 10'

### FIRST FLOOR

Bedroom 1	4.28m x 3.47m	14' x 11'
Dressing	2.24m x 2.25m	7'4" x 7'5"
Bedroom 2	3.73m x 2.78m	12'2" x 9'1"
Bedroom 3	3.40m x 2.86m	11'3" x 9'5"
Bedroom 4	3.59m x 2.53m	11'9" x 8'3"
Bedroom 5	2.75m x 2.76m	9'1" x 9'1"

Dimensional statements may vary by 664 (16in) 3/4" and have some variations as indicated by "

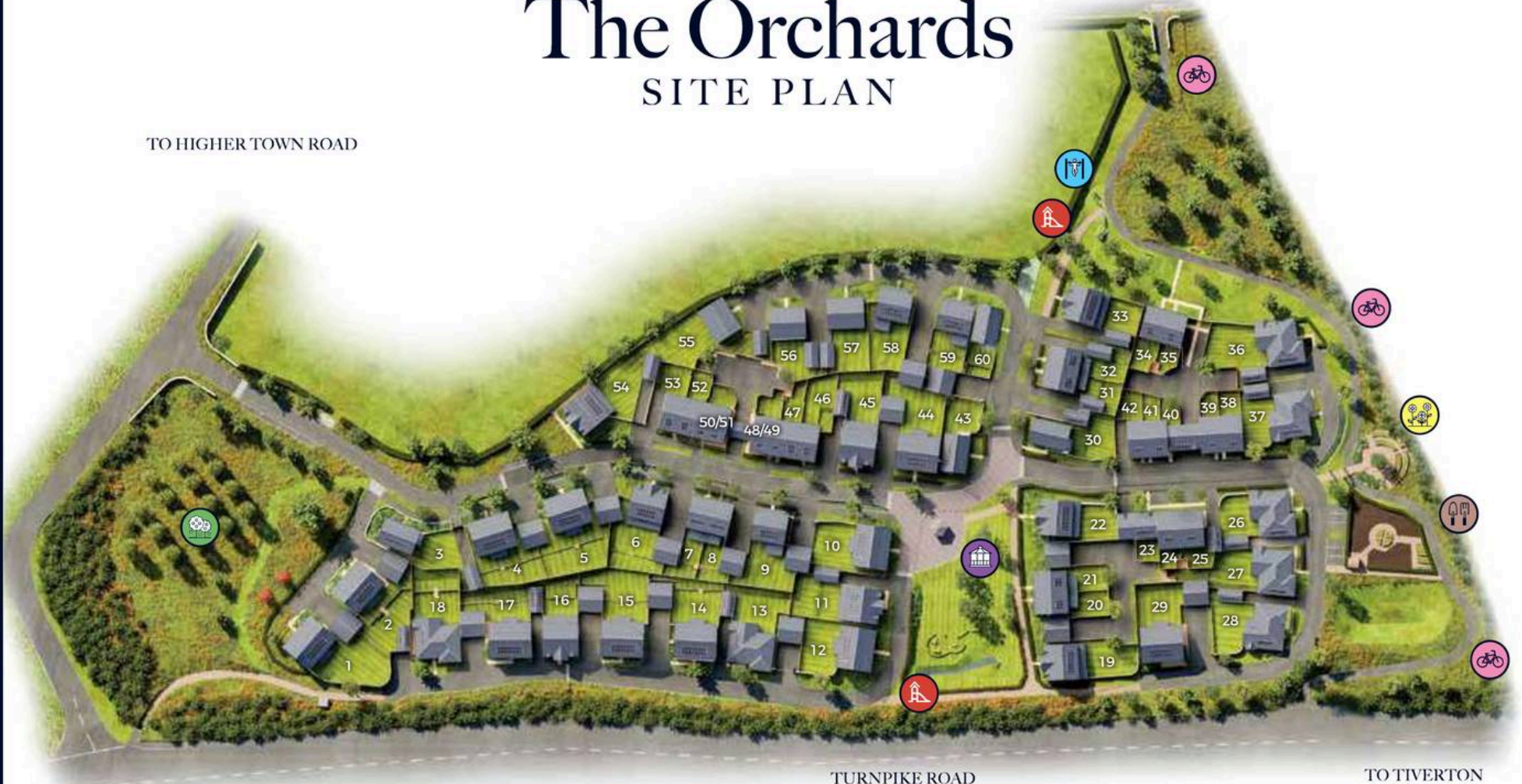


# The Orchards

## SITE PLAN

HIGHER TOWN ROAD

TO HIGHER TOWN ROAD



TO TIVERTON

TURNPIKE ROAD

TO TIVERTON PARKWAY / M5



CYCLE PATH



EXERCISE EQUIPMENT



ALLOTMENTS



PLAY AREA



COMMUNITY ORCHARD



COMMUNITY GARDEN



PAVILION / VILLAGE SQUARE



Housen Estates is proud to partner with **Custom Insurance & Mortgage Solutions** to offer expert mortgage and insurance advice tailored to your property journey. Whether you're buying your first home, moving up the ladder, or expanding your portfolio, our trusted partners provide personalised support, access to a wide panel of lenders, and guidance every step of the way. Together, we make securing your dream home simple, smart, and stress-free.

Scan the QR code or visit [www.custominsurancemortgagesolutions.co.uk](http://www.custominsurancemortgagesolutions.co.uk) and click on 'Start Your Journey' at the top of any page.