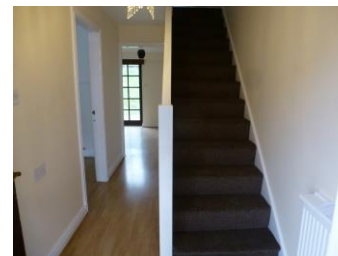


Butterworth Close, Wesham



Asking Price

£525 P.C.M. with a bond of £525

- 2 BEDROOM UNFURNISHED SEMI AVAILABLE IN WESHAM
- CLOSE TO LOCAL SHOPS, TRAIN STATION AND MOTORWAY
- GOOD SIZED LOUNGE AND FITTED KITCHEN
- 2 DOUBLE BEDROOMS AND MODERN BATHROOM
- DOUBLE GLAZING & GAS CENTRAL HEATING
- PROPERTY HAS BEEN REDECORATED THROUGHOUT WITH NEW CARPETS
- DRIVEWAY AND REAR GARDEN