



JOWEBSTER

28 Oak Lodge
Chantry Square, W8



Property Attributes

- Reception/Dining Area
- Separate Kitchen
- Master Bedroom with En-suite Bathroom
- Second Bedroom
- Juliet Balconies
- 24 Hour Security & Concierge
- Built In Wardrobe`s
- Underground Parking



Terms

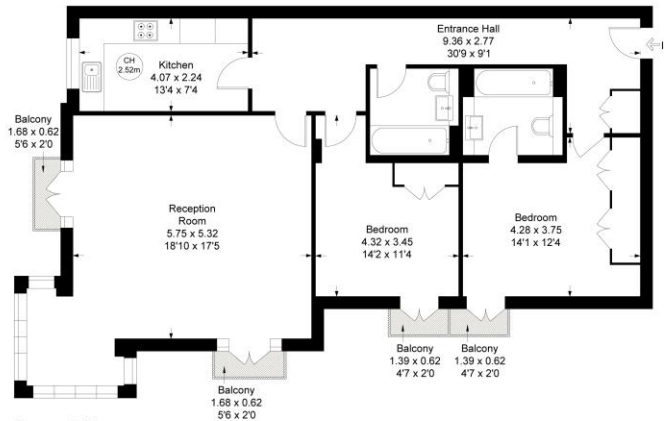
- Price: £1,695,000
- Borough: Royal Borough of Kensington And Chelsea
- Tenure: Leasehold approx. 965 years remaining
- Service Charge: £9,148 per annum
- Ground Rent: £152 per annum
- Council Tax Band: Band H



OAK LODGE, CHANTRY SQUARE, W8

Approximate gross internal area = 1091 sq ft / 101.33 sq m

Key:
CH - Ceiling Height



Second Floor

Not to scale, for guidance only and must not be relied upon as a statement of fact.
All measurements and areas are approximate only

+44 (0) 20 7349 7055
sales@jowebster.com

Misdescription Act

We wish to advise prospective purchasers that these sales particulars are believed to be correct, but their accuracy is in no way guaranteed, nor do they form any part of contract. We have not carried out a detailed survey nor tested the services, appliances or specific fittings. Measurements are approximate.