



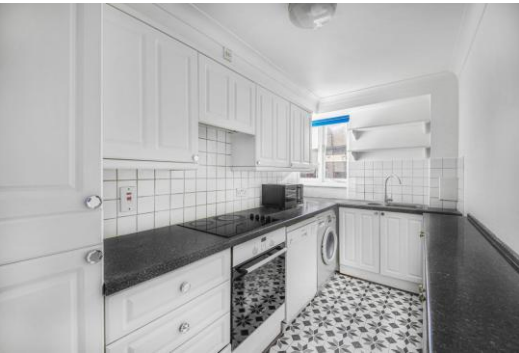
Peninsula Court

121 East Ferry Road, E14

Asking Price £375,000

Chestertons is proud to offer this stunning two-bedroom apartment, perfectly situated just moments from Crossharbour DLR and within easy walking distance of Canary Wharf and with private underground parking.

CHESTERTONS



Peninsula Court

121 East Ferry Road, E14

- Two Bedroom Apartment | Private Balcony
- Private Underground Parking
- Beautiful views of the River Thames
- 640sq ft Internal Living Space
- 0.1m to Crossharbour DLR station and 0.5m to Canary Wharf station



Chestertons is delighted to present this well-appointed two-bedroom apartment in Peninsula Court, ideally located on East Ferry Road, just moments from Crossharbour DLR and a short walk from Canary Wharf.

Spacious and well maintained, this bright apartment features wood flooring throughout and offers generous living space. The reception area is flooded with natural light and leads to a separate, fully fitted kitchen with ample cupboard space, ideal for both daily living and entertaining.

Both bedrooms are generously sized and benefit from excellent storage, while the modern family bathroom is presented in excellent condition.

Residents enjoy the convenience of superb transport links, with Crossharbour DLR just steps away, offering swift access into the city and beyond. Canary Wharf is also within easy walking distance, providing access to Jubilee Line services, premium shopping, restaurants, and vibrant riverside bars.

Tenure: Leasehold 967 years approx. remaining

Service Charge: £3,759pa approx.

Ground Rent: £75 pa

Local Authority: Tower Hamlets

Council Tax Band: D

Score	Energy rating	Current	Potential
92+	A		
81-91	B		
69-80	C		
55-68	D	63 D	72 C
39-54	E		
21-38	F		
1-20	G		

Chestertons Canary Wharf & Greenwich Sales

Harbour Island

28 Harbour Exchange Square

London

E14 9GE

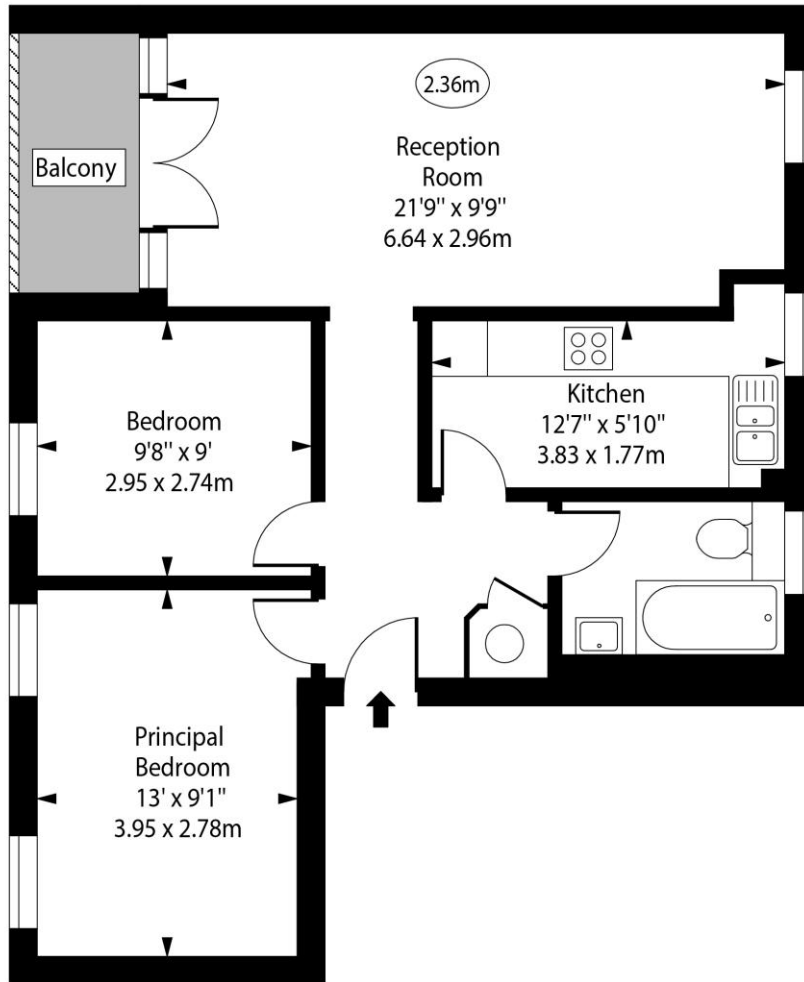
canarywharf@chestertons.co.uk

020 7510 8300

chestertons.co.uk

Peninsula Court,
East Ferry Road, E14

○ - Ceiling Height



First Floor

Approx Gross Internal Area 640 Sq Ft - 59.46 Sq M

Every attempt has been made to ensure the accuracy of the floor plan shown. However, all measurements, fixtures, fittings, and data shown are approximate interpretations and for illustrative purposes only. Measured according to the RICS. Not To Scale.

www.goldlens.co.uk

Ref. No. 029441D

