



5a Magdalen Road, Wanborough

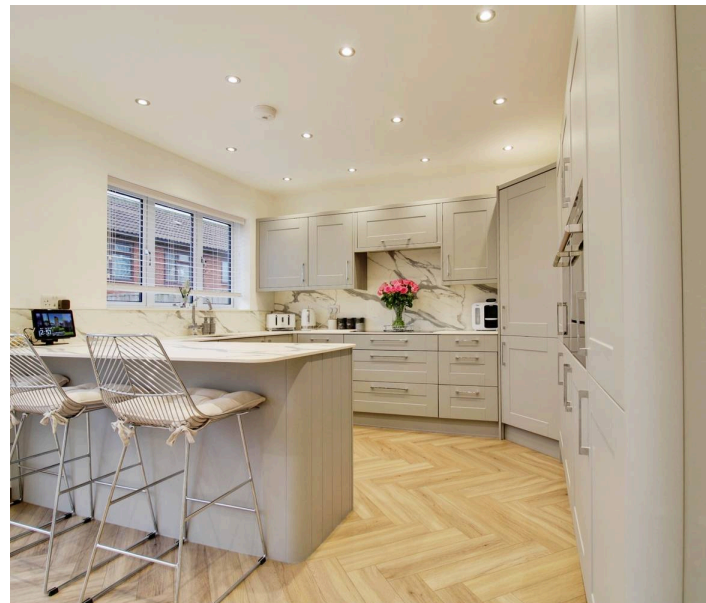
Swindon

£645,000

5a Magdalen Road

Wanborough, Swindon

Nestled in the sought-after village of Wanborough, this exceptional four bedroom, four bathroom self-build home is finished to an impeccable standard. The heart of the home is a stunning open-plan kitchen, dining, and living area with bi-fold doors leading to a landscaped garden. A separate lounge, utility, and cloakroom complete the ground floor. Upstairs, the luxurious master suite boasts an en-suite and walk-in wardrobe, with three additional double bedrooms, two en-suites, and a stylish family bathroom. A double garage, ample parking, and excellent transport links make this an outstanding opportunity. Viewing is highly recommended.





5a Magdalen Road

Wanborough, Swindon

Council Tax band: E

Tenure: Freehold

EPC Energy Efficiency Rating: B

EPC Environmental Impact Rating: B

- WANBOROUGH VILLAGE
- IMPRESSIVE SELF BUILD
- DOUBLE GARAGE
- HIGH STANDARD THROUGHOUT
- MASTER SUITE WITH WALK IN WARDROBE & EN-SUITE



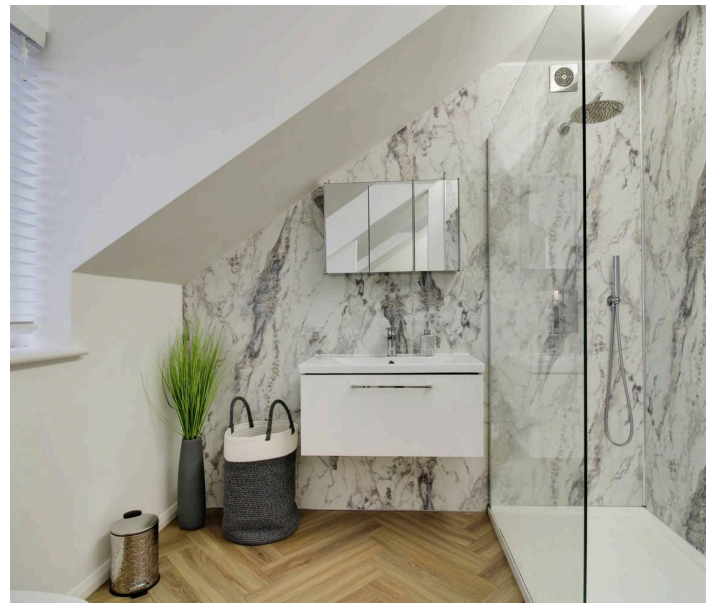
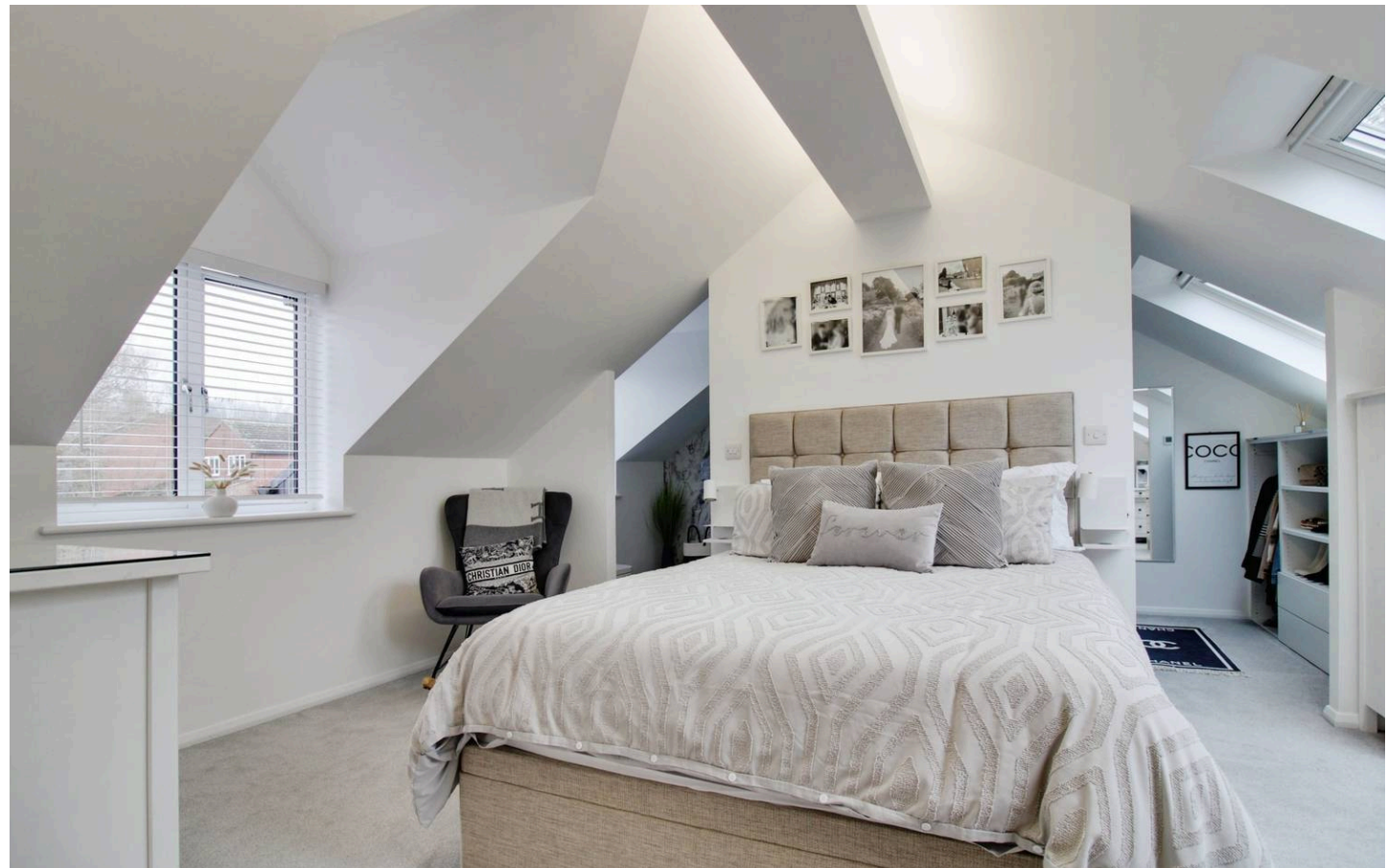
5a Magdalen Road

Wanborough, Swindon

Nestled in the sought after village of Wanborough, this impressive self build home has been meticulously designed and finished to an exceptional standard throughout. Offering a perfect blend of contemporary elegance and practical family living, this four bedroom, four bathroom residence is a true standout.

Upon entering, you are welcomed by a bright entrance hall that seamlessly leads into the heart of the home an impressive open-plan kitchen, dining, and living area. The beautifully designed kitchen features high end integrated appliances, a sleek double oven, and an abundance of storage, making it both a contemporary and functional space. Expansive bi-fold doors flood the space with natural light and provide effortless access to the beautifully landscaped rear garden, perfect for entertaining or enjoying quiet outdoor moments.

The ground floor also boasts a separate, spacious lounge for more intimate gatherings, as well as a convenient utility room, under-stair storage, and a downstairs cloakroom.



5a Magdalen Road

Wanborough, Swindon

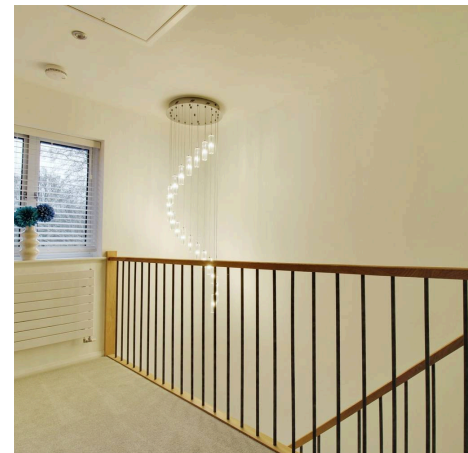
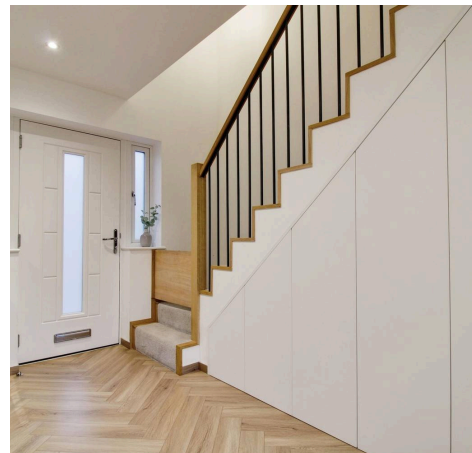
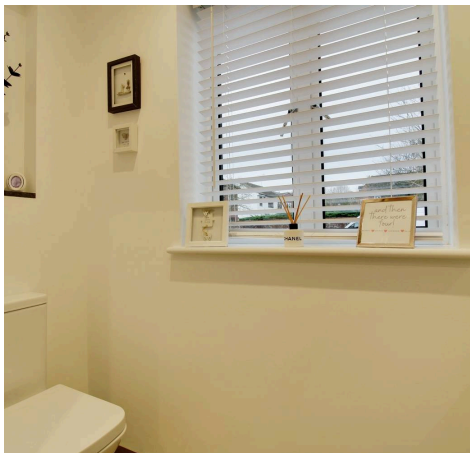
Ascending to the first floor, you'll find four generous double bedrooms, three of which benefit from private en-suite bathrooms. The master suite is a true retreat, offering a beautiful en-suite shower room and a walk-in wardrobe for added indulgence. The contemporary family bathroom is a statement of sophistication, featuring a sleek freestanding bath.

Externally, the property continues to impress with a double garage, ample driveway parking, and well-maintained gardens. Ideally positioned in the charming village of Wanborough, this home provides easy access to local shops, excellent schools, and welcoming village pubs. With superb transport links to surrounding villages and Junction 15 of the M4, convenience and connectivity are assured.

A truly exceptional home in a highly desirable location, viewings are highly recommended.

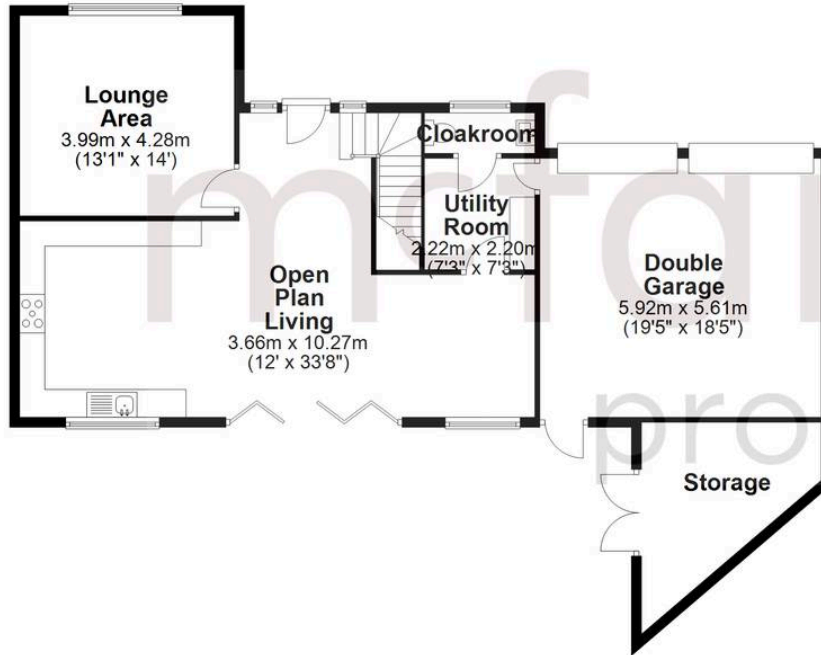


5a Magdalen Road



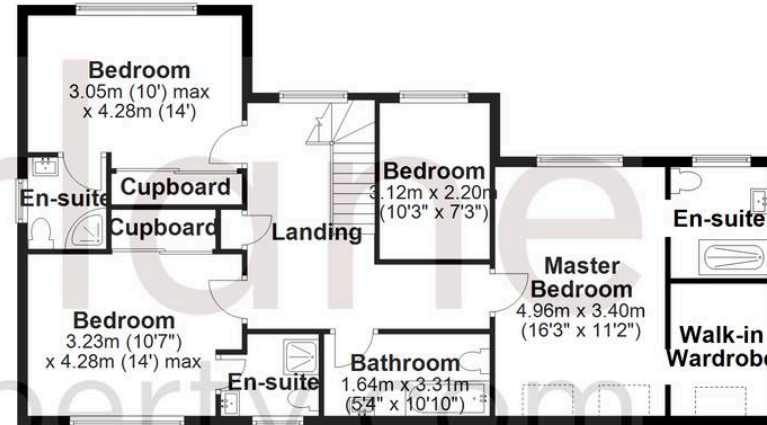
Ground Floor

Approx. 112.9 sq. metres (1215.5 sq. feet)



First Floor

Approx. 92.6 sq. metres (996.5 sq. feet)



Total area: approx. 205.5 sq. metres (2212.0 sq. feet)

McFarlane Sales & Lettings

McFarlane Sales & Letting Ltd, 28-30 Wood Street - SN1 4AB

01793 296880 • oldtown@mcfarlaneproperty.com • www.mcfarlaneproperty.com/

mcfarlane
property.com