

Property ref: 180562

## Baker Street, Reading, RG1 7XX

£1,400 PCM

**HASLAM'S**  
Lettings



A brand new two bedroom top floor apartment located in a newly converted Grade II listed building on Baker Street, in the Castle Hill/Russell Street Conservation Area. This apartment is located on the West side of Reading town centre, within walking distance of the Oracle shopping centre and the main line station.

Reading Borough Council tax band B.

Please note - there is no lift in the building.

Broadband/Mobile Info: Connections available. For an indication of specific speeds and supply of Broadband and Mobile, we advise applicants go to the Ofcom website Broadband and Mobile Coverage Checker.

### Available Now

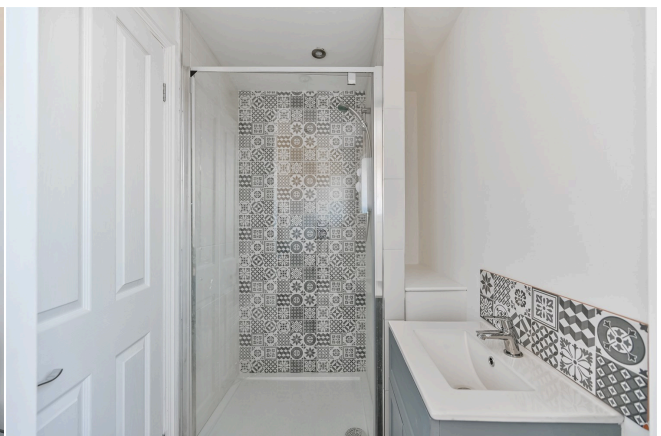
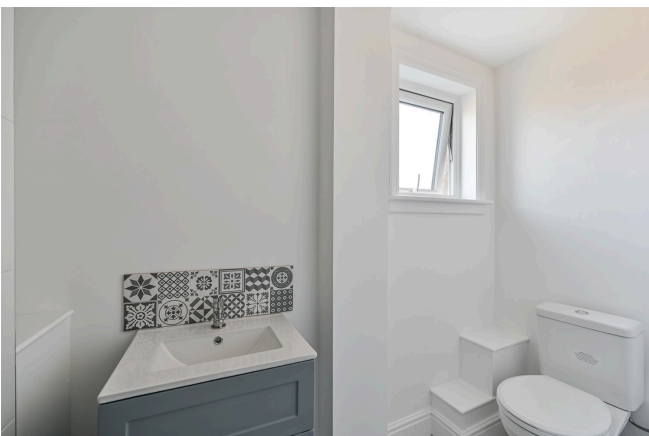
- Two bedrooms; One bathroom
- Fully fitted kitchen with appliances
- Newly fitted shower room
- Electric heating; EPC rating E
- Furnished; No parking
- Managed by LANDLORD

\*Fees For Assured Shorthold Tenancies: when you rent a property from us you will be required to pay a sum equivalent to one weeks' rent for a holding deposit. Upon successful application, this amount will be off set against your first months' rent. You will also be required to pay a security deposit equivalent to 5 weeks' rent which will be held and protected in line with Deposit legislation. For more information about our fees please visit: [www.haslams.net](http://www.haslams.net)  
Fees for all other tenancies (Non Housing Act Tenancies / Company Lets): when you rent a property from us we will charge you a one-off fee per property. This charge is the equivalent of 15 days of the monthly rental charge (+VAT) with a minimum fee of £450 (inc.VAT) up to a maximum of £650 (inc.VAT). Other fees may apply depending on your circumstances.

**0118 960 1055**

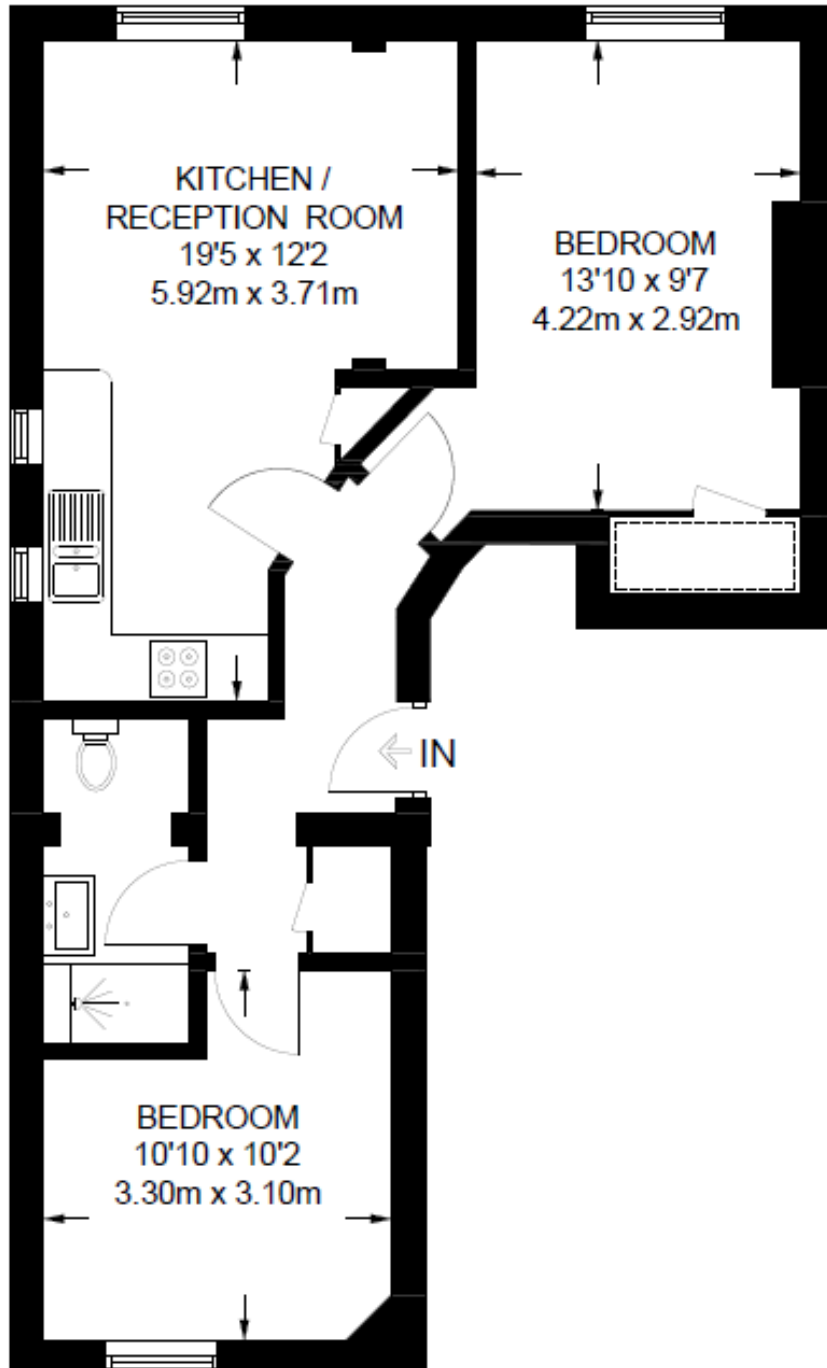
**lettings@haslams.net [www.haslams.net](http://www.haslams.net)**

**Haslams Estate Agents Ltd, 159 Friar Street, Reading, Berkshire, RG1 1HE**





= REDUCED HEADROOM BELOW 1.5M / 5'0



### SECOND FLOOR

**APPROXIMATE GROSS INTERNAL AREA  
571 SQ FT / 53.1 SQ M**

This plan has been drawn for illustrative and identification purposes only.