



4 Renson Close, Walton, Peterborough
£950 pcm

 **NEWTON FALLOWELL**

4 Renson Close

Walton, Peterborough

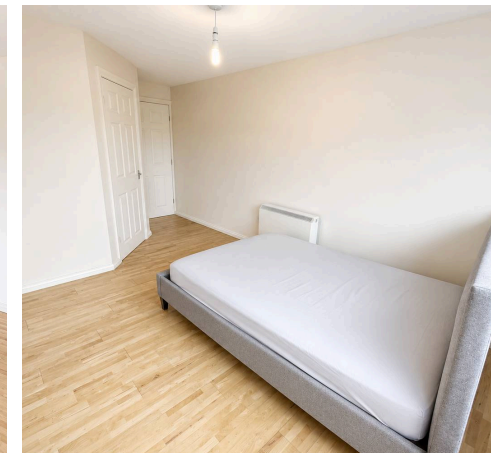
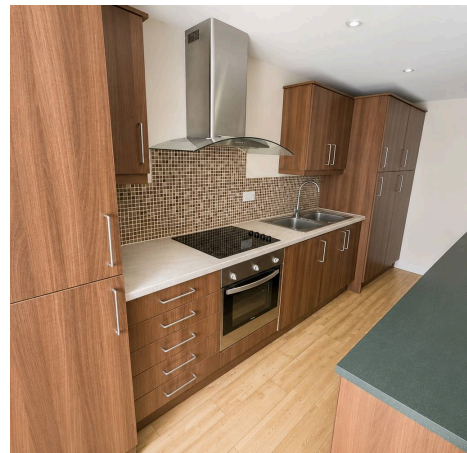
This impressive GROUND FLOOR APARTMENT is AVAILABLE IMMEDIATELY and offers TWO DOUBLE BEDROOMS and TWO EN-SUITE SHOWER ROOMS, as well as bright OPEN PLAN LIVING & DINING AREA. The thoughtfully arranged layout includes a sleek, fully-fitted modern kitchen with integrated appliances, with the kitchen open from the open plan lounge diner. The property also boasts two double bathrooms, each benefiting from contemporary en-suite shower rooms. Additional highlights include a PRIVATE, FULLY FENCED OUTDOOR AREA with low-maintenance gravel and a paved patio, as well as a PARKING AREA to the front aspect.

Council Tax band: B

Tenure: Leasehold

EPC Energy Efficiency Rating: C

EPC Environmental Impact Rating: E





Entrance Porch

Lounge Diner

17' 0" x 16' 7" (5.18m x 5.06m)

Kitchen

16' 2" x 5' 7" (4.92m x 1.70m)

Bedroom 1

12' 0" x 10' 5" (3.65m x 3.18m)

En-Suite

5' 11" x 5' 1" (1.80m x 1.56m)

Bedroom 2

17' 1" x 10' 4" (5.20m x 3.15m)

En-suite

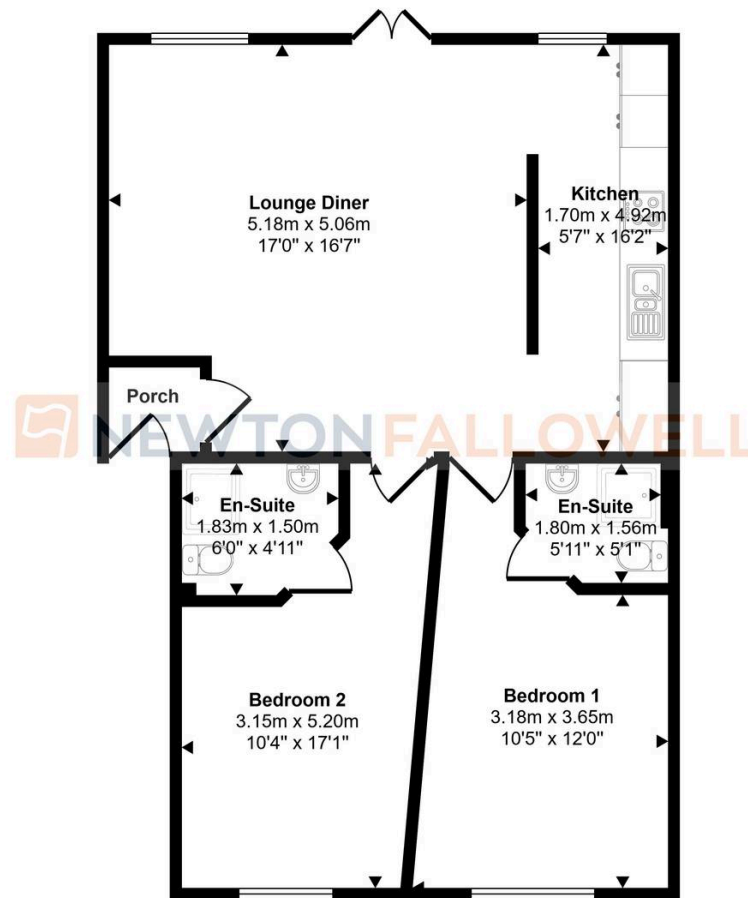
6' 0" x 4' 11" (1.83m x 1.50m)

Photo Disclaimer

Please note that the photography has been enhanced via AI to remove some of the previous tenants' furnishings.



Approx Gross Internal Area
67 sq m / 722 sq ft



Floorplan

This floorplan is only for illustrative purposes and is not to scale. Measurements of rooms, doors, windows, and any items are approximate and no responsibility is taken for any error, omission or mis-statement. Icons of items such as bathroom suites are representations only and may not look like the real items. Made with Made Snappy 360.

Newton Fallowell - Peterborough

Newton Fallowell Estate Agents, 11 Skaters Way - PE4 6NB

01733 511225 · peterborough@newtonfallowell.co.uk · newtonfallowell.co.uk/peterborough