



LAKE CLOSE, SW19

£750,000

Secure gated development

Three bedrooms

Spacious

Residents' parking

Communal gardens

Energy rating: d

@marshandparsons
marshandparsons.co.uk

MARSH &
PARSONS



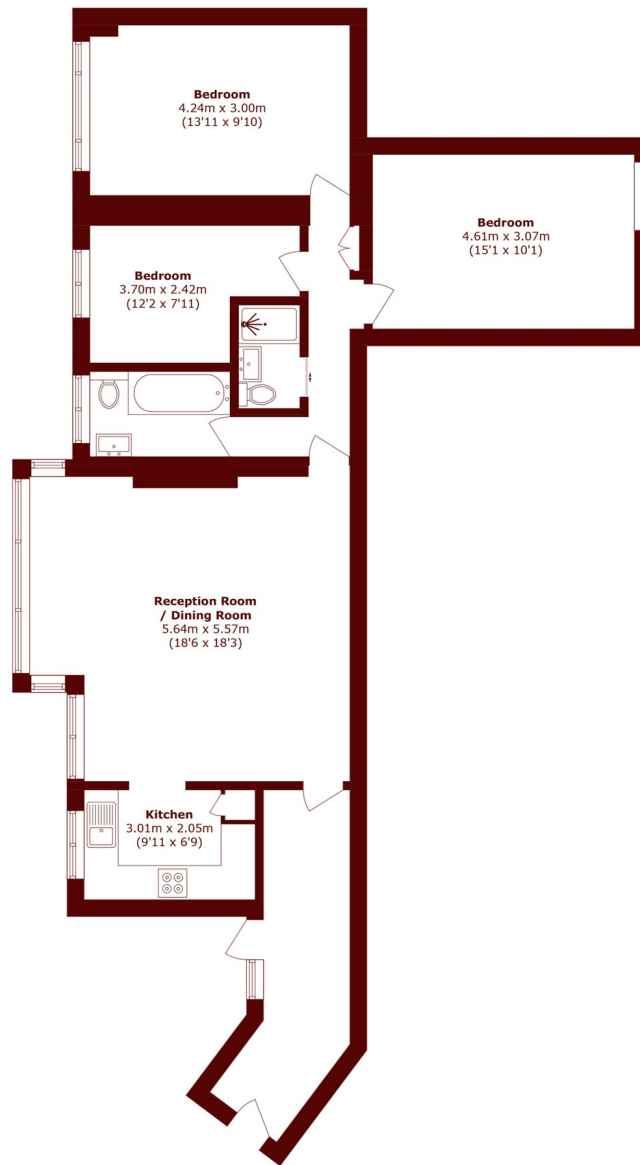
ABOUT THE PROPERTY

A well presented chain free, three bedroom purpose built apartment, located on the first floor of this prestigious, secure gated development on the slopes of Wimbledon Hill, a short walk from the town centre and Wimbledon Village.

The apartment has an open plan living room with a feature Dru fire and picture windows overlooking the manicured gated gardens. The accommodation extends to over 1,000 sq ft, with three comfortable bedrooms, a modern kitchen, luxury bathroom and separate cloakroom. There is a very useful utility/storage area off the secondary staircase and residents parking is available by licence.



STEP INSIDE LAKE CLOSE



Total area (approx.): 95.9 sq. m (1032.2 sq. ft)

Wimbledon
020 8879 6660

Energy Rating: D We aim to make our particulars both accurate and reliable. However, they are not guaranteed; nor do they form part of an offer or contract. If you require clarification on any points then please contact us, especially if you're traveling some distance to view. Please note that appliances and heating systems have not been tested and therefore no warranties can be given as to their good working order

MARSH &
PARSONS