



Marshalsea Road, SE1

£950,000

A genuinely unique opportunity to create a breathtaking duplex penthouse apartment, in the heart of the historic and thriving area of Borough.

Situated at the head of the most prestigious road in Borough, offering a dynamic mix of lifestyle, leisure and cultural facilities. With excellent views and outside space, towards the River Thames and the Shard. Nearby you will find Borough Market and the best of the South Bank, as well as excellent transport links via London Bridge, Southwark and Waterloo stations.

Features

Development Opportunity

Breathtaking views

Feature Spiral Staircase
Almost 2,500 Sq Ft Internally
Almost 1,500 of External
Space



Marshalsea Road, SE1

Situated on the top (third floor) of a period warehouse conversion overlooking Mint Street Park; the current owner has exercised their 'Air Rights' and gained planning permission to extend the current property by an additional storey, creating potential for a four bedroom, three bathroom, split-level top floor apartment, generating almost 2,500 sq. Ft of internal space.

Marshalsea Road is a thoroughfare in Southwark that is located in close proximity to Borough Station (Northern Line) with services to London Bridge with its connections to Bank (in the City of London) and Canary Wharf financial district. Close by is the highly regarded Joe's Kitchen and the popular Lord Clyde pub, renowned for its friendly atmosphere with numerous amenities nearby; including world famous Borough Market, the South Bank and Flat Iron Square. Marshalsea Road is surrounded by an enviable role call of parks and green spaces whilst being within easy access to everything London has to offer and located within walking distance from the River Thames.

The area is steeped in history with Southwark Cathedral, Shakespeare's Globe Theatre, Tower Bridge and the Tower of London all within walking distance.



Proposed CGI

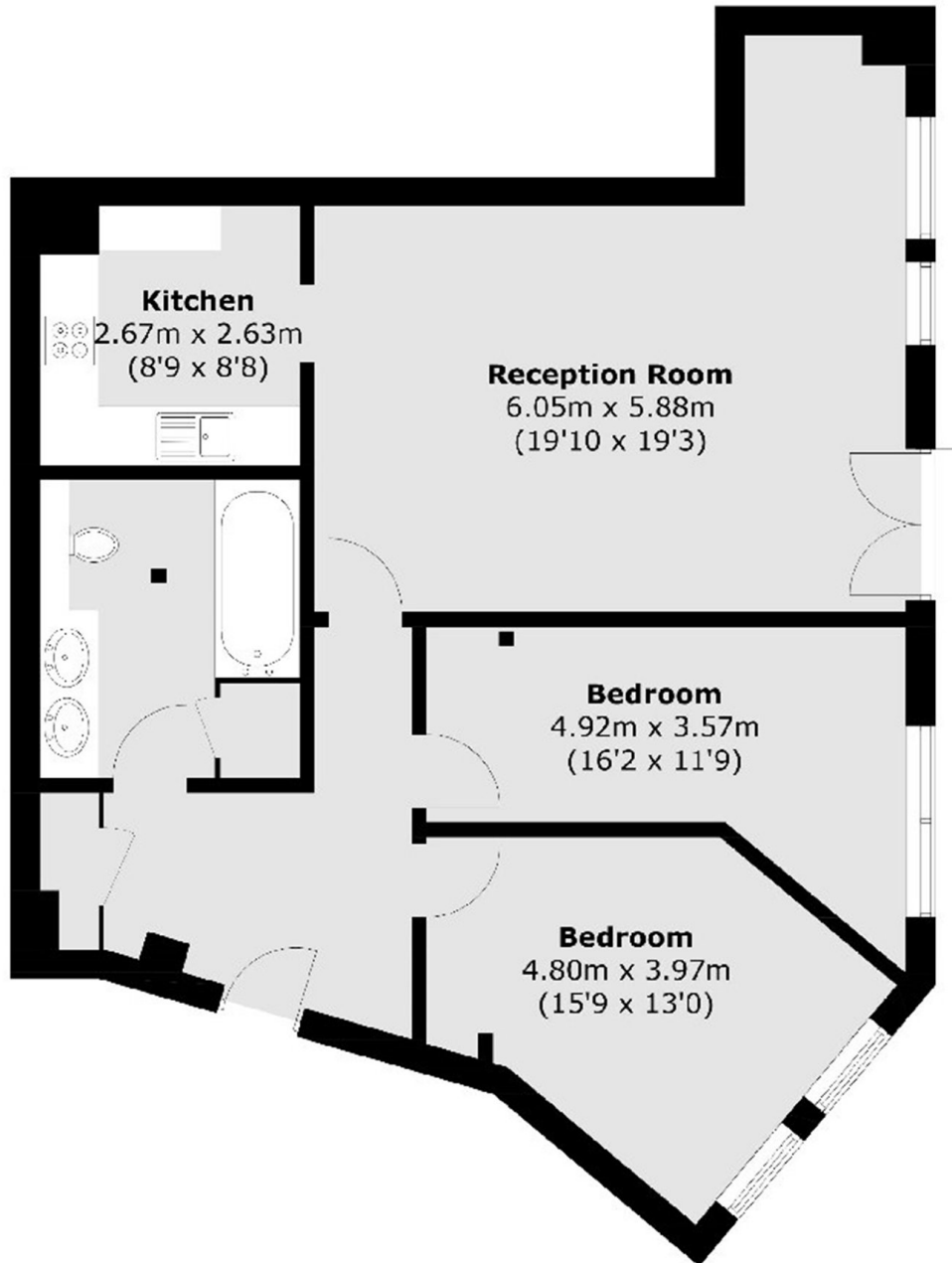


Proposed CGI



Proposed CGI

Marshalsea Road,
London, SE1



Total area (approx.): 80.1 sq. m (862.2 sq. ft)