



Southfield Gardens, TW1

£700,000

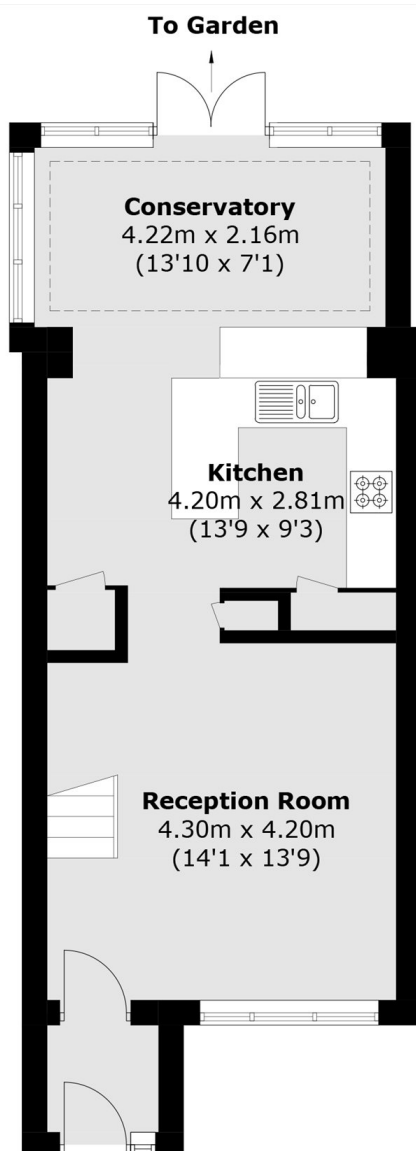
Nestled between Teddington and Strawberry Hill is this stunning three bedroom end terrace house that has been renovated to an excellent standard and comes with a South West facing garden and parking.

Southfield Gardens is a highly sought after road in Strawberry Hill and is just around the corner from Teddington high street where you will find a vast array of shops, pubs and restaurants. Teddington has some fantastic schools such as Newlands House, Stanley Primary and Teddington School.

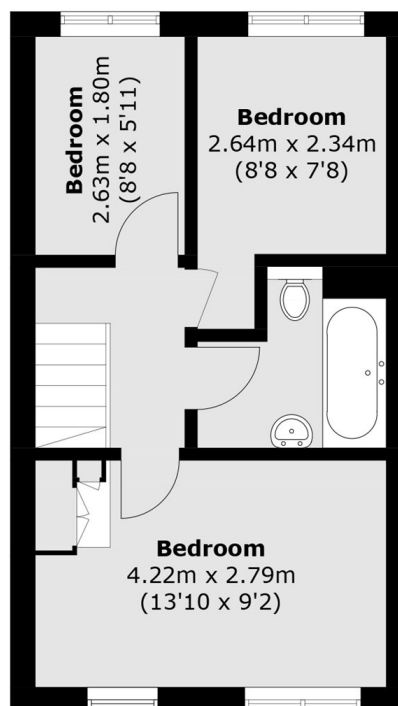
Features

- Three Bedrooms
- Excellent Condition
- Modern Three Piece Bathroom
- Conservatory
- Allocated Parking
- South West Facing Garden

Southfield Gardens, Strawberry Hill, TW1



Ground Floor



First Floor

Total area (approx.): 78.5 sq. m (844.9 sq. ft)