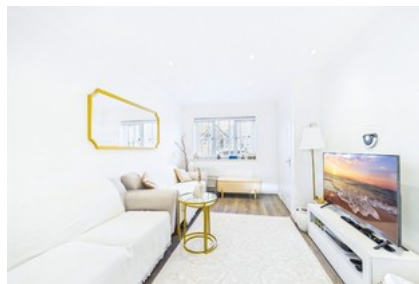




Lavender Close South Ockendon



- ✓ Ideal First Time Buyer Property
- ✓ Two Bedroom - Terraced Home
- ✓ Beautifully Decorated Throughout
- ✓ Modern Kitchen / Dining Area
- ✓ Built In Wardrobes To Master Bedroom

- ✓ Elegant Bathroom
- ✓ Garden With Shed Storage And Rear Access
- ✓ Two Parking Spaces
- ✓ Council Tax Band : C & Epc Rating: C
- ✓ Brandon Groves Estate - Amazing Location!

Fixed Price **£375,000**

Bedroom 2 Bathroom 1 Reception 1