



Guide Price

£280,000

Freehold

2x  1x  1x 

**Clare Road, Whitstable,
Kent, CT5**

OVER 60?

Secure this property
for up to **59% less!**

Wards
Helping you move forwards



Main features

- No onward chain
- An ideal holiday home or residential dwelling
- Updated roof tiles in recent years
- Highly sought-after location between Tankerton and Whitstable
- Easily maintainable rear garden

Accommodation

GROUND FLOOR

Entrance Hallway

Bedroom 2: 14'0 x 6'11 (4.27m x 2.11m)

Lounge/Diner: 20'2 x 9'10 (6.15m x 3.00m)

Bedroom 1: 15'0 x 10'0 (4.58m x 3.05m)

En Suite Bathroom

Separate Toilet

Kitchen: 11'8 x 6'11 (3.56m x 2.11m)

Lean-to: 15'3 x 8'4 (4.65m x 2.54m)

Shower Room

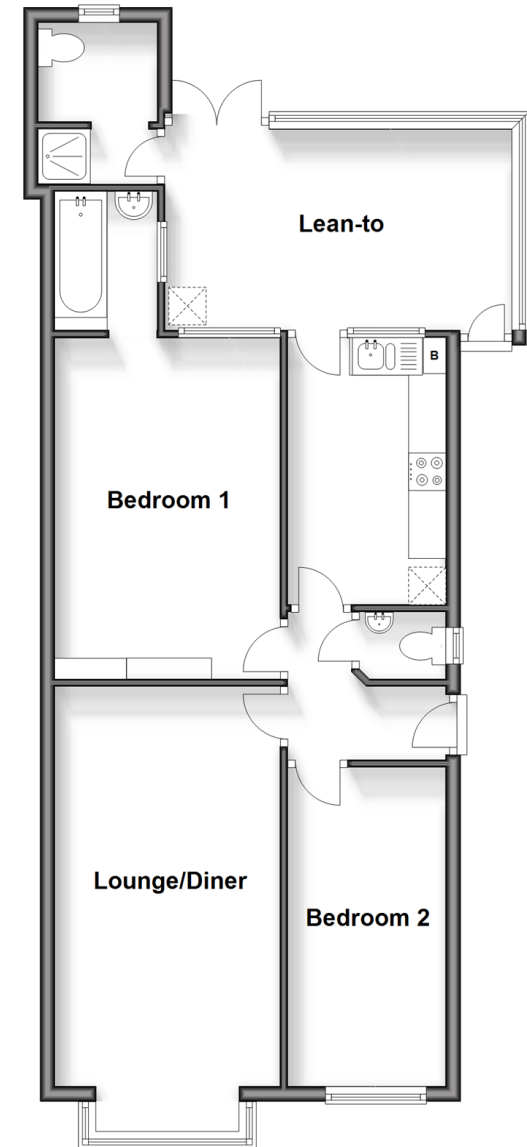
OUTSIDE

Front Garden

Rear Garden

Ground Floor

Approx. 72.4 sq. metres (779.0 sq. feet)



Call Whitstable - 01227 772272 ■ wardsofkent.co.uk

- Legal advice should be taken to verify fixtures/fittings, planning, alterations and/or lease details
- Appliances & services are untested, dimensions are approximate and floor plans are not to scale
- Through a Homewise Home For Life Plan people aged 60+ can secure this property for up to 50% less, by purchasing a Lifetime Lease



12033669/20251204/NF/NF