



Connells

Pandora Drive
Peterborough

Pandora Drive Peterborough PE2 8HB

for sale guide price
£215,000



Property Description

Situated in the highly sought-after Cardea development, this attractive three bedroom mid-terraced home provides modern and flexible family living across three well-proportioned floors.

The ground floor accommodation comprises a welcoming entrance hall with cloakroom/WC and a contemporary open-plan kitchen, lounge and dining area. This social space creates an ideal hub for family life and entertaining, with double doors opening out to the enclosed rear garden, allowing for an excellent connection between indoor and outdoor living.

To the first floor, the property offers two generous bedrooms served by a family bathroom, all positioned around a central landing. These rooms are ideal for children, guests, or for use as a home office if required.

The top floor is dedicated to the principal bedroom, providing a private and spacious retreat, benefiting from its own landing area and offering an ideal layout for a main bedroom suite.

Externally, the home enjoys an enclosed rear garden, perfect for families and outdoor dining, while allocated parking adds further convenience.

Located ideally for local amenities, schools and transport links, this property would make an excellent first purchase, family home or investment opportunity.

Entrance Hall

Door to front, stairs to first floor.

WC

WC, wash hand basin.

Kitchen/Lounge/Diner

Patio door to rear, window to front, laminate flooring, integrated dishwasher and oven with 4 ring hob, cooker hood, two radiators, breakfast bar, high and low level storage with worktops over, stainless steel sink/drainers with mixer tap and wall mounted boiler.

First Floor

Carpet.

Bedroom Two

Window to rear, radiator and laminate flooring.

Bedroom Three

Two windows to front, radiator and laminate flooring.

Bathroom

Bath with shower over, WC, wash hand basin.

Second Floor

Bedroom One

Two skylights to front, two skylights to rear, laminate flooring and radiator.

Outside

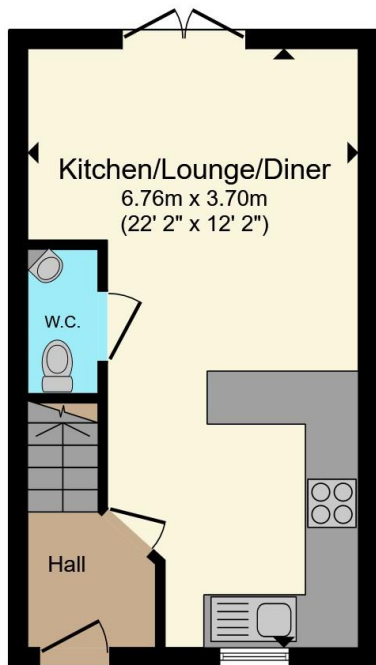
Rear Garden

Laid to lawn, shed and patio area.

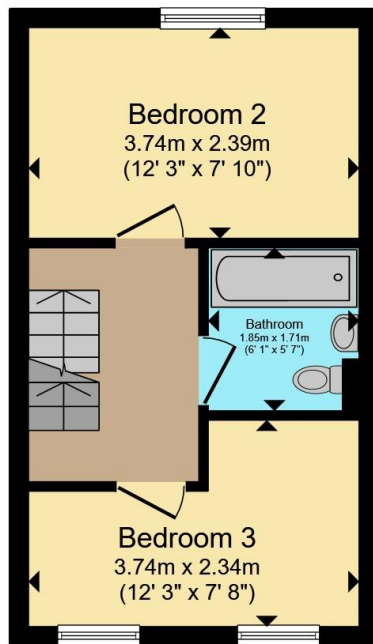
Front

Allocated parking.

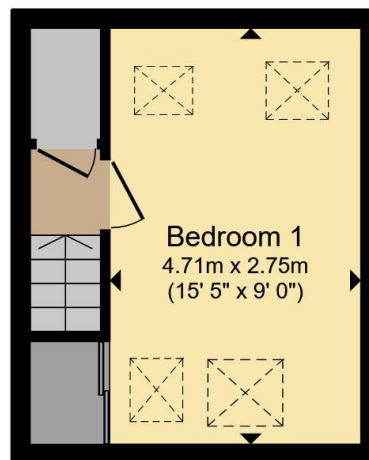




Ground Floor



First Floor



Second Floor

Total floor area 68.3 m² (735 sq.ft.) approx

This floor plan is for illustrative purposes only. It is not drawn to scale. Any measurements, floor areas (including any total floor area), openings and orientation are approximate. No details are guaranteed, they cannot be relied upon for any purpose and they do not form part of any agreement. No liability is taken for any error, omission or misstatement. A party must rely upon its own inspection(s). Powered by www.propertybox.io

Connells

To view this property please contact Connells on

T 01733 314 775
E peterborough@connells.co.uk

14 Cowgate
 PETERBOROUGH PE1 1NA

EPC Rating: C Council Tax
 Band: B

view this property online connells.co.uk/Property/PBO312661

Tenure: Freehold



1. MONEY LAUNDERING REGULATIONS Intending purchasers will be asked to produce identification documentation at a later stage and we would ask for your co-operation in order that there will be no delay in agreeing the sale. 2. These particulars do not constitute part or all of an offer or contract. 3. The measurements indicated are supplied for guidance only and as such must be considered incorrect. Potential buyers are advised to recheck measurements before committing to any expense. 4. We have not tested any apparatus, equipment, fixtures, fittings or services and it is in the buyers interest to check the working condition of any appliances.

Connells Residential is registered in England and Wales under company number 1489613, Registered Office is Cumbria House, 16-20 Hockliffe Street, Leighton Buzzard, Bedfordshire, LU7 1GN. VAT Registration Number is 500 2481 05.

See all our properties at www.connells.co.uk | www.rightmove.co.uk | www.zoopla.co.uk

Property Ref: PBO312661 - 0006

