



William Guy Gardens, London, E3

BUTLER & STAG





**Well-presented and proportioned two bedroom two bathroom apartment with a private balcony, located moments from Bromley-by-Bow station.**



- Two Bedroom Apartment
- Two Bathrooms
- Fourth Floor with a Balcony
- Open-Plan Kitchen/Living Space
- Moments from Bromley-by-Bow Station
- Modern Development
- Unfurnished
- Available from 6th March 2026

Situated on the fourth floor of a secure modern development, the property comprises of a spacious dual-aspect and open-plan kitchen / living space with wooden floors, a west-facing balcony with city skyline views, two double bedrooms, two bathrooms (one en-suite) and plenty of internal storage.

Northmeade House is very well positioned for transport links, including nearby Bromley-by-Bow underground station and Devons Road DLR, providing easy access to Canary Wharf and the City. The local area provides various amenities, principally a supermarket just a stone's throw away.

Perfectly suited to a couple or two professional sharers, this apartment is available unfurnished from 6th March 2026.

EPC Rating B  
Council Tax Band D



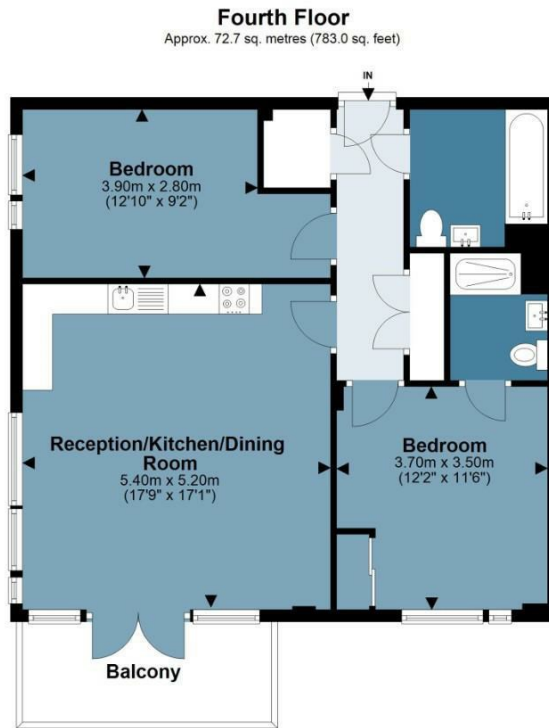
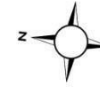




## Northmeade House

Approx. Gross Internal Area 73 Sq M ( 788 Sq Ft)

BUTLER & STAG



Measurements are approximate and for illustration purposes only. While we do not doubt the accuracy and completeness, we advise you conduct a careful independent assessment of the property to determine monetary value.  
© @modephoto.uk www.modephoto.co.uk

IMPORTANT NOTICE - These particulars have been prepared in good faith and they are not intended to constitute part of an offer or contract. We have not performed a structural survey on this property and the services, appliances and specific fittings have not been tested. All photographs, measurements, floor plans and distances referred to are given as a guide and should not be relied upon.

BUTLER & STAG

☎ 020 8102 1236

🏠 508 Roman Road, Bow, London, E3 5LU

✉ bow@butlerandstag.com

[www.butlerandstag.uk](http://www.butlerandstag.uk)