

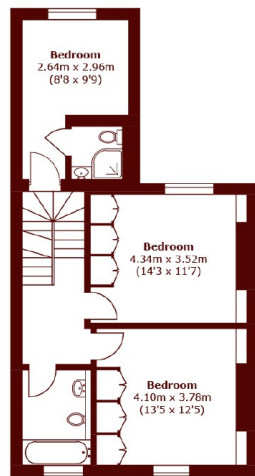


Sheffield Terrace, W8

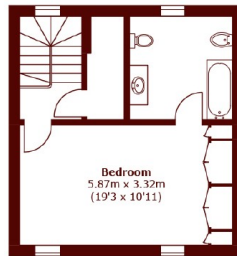
£4,500 per week (pcm)

 5  4  2  C

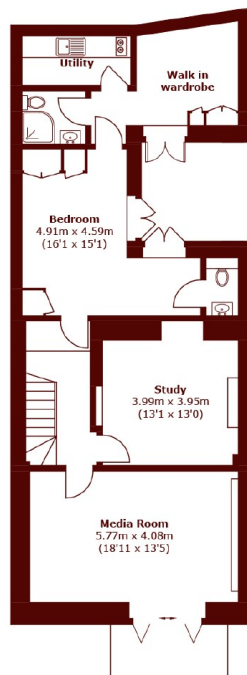
- House
- Five Bedrooms
- Four Bathrooms
- Private Patio, Balcony & Terrace
- Split Level
- Recently Refurbished



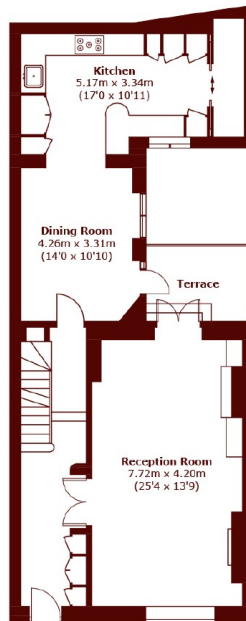
Second Floor



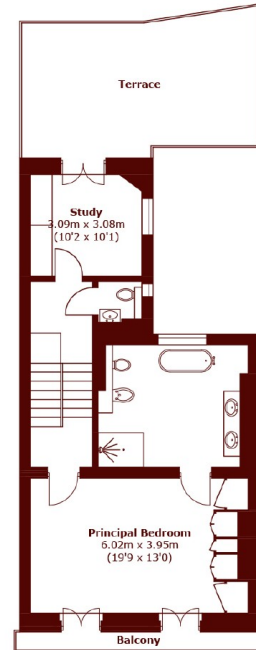
Third Floor



Lower Ground Floor



Ground Floor



First Floor

Total area (approx.): 323.2 sq. m (3,478.8 sq. ft)
 Balcony area (approx.): 3.4 sq. m (36.6 sq. ft)
 Terrace area (approx.): 30.2 sq. m (325.1 sq. ft)
 (Excluding Void)

Marsh & Parsons Kensington

9 Kensington Church Street,
 London, W8 4LF
 020 7368 4450