



# Wedderburn House

Wedderburn Road, Hampstead NW3

Asking Price £1,250,000

Occupying a superb position on the first floor of the distinguished and highly sought-after Wedderburn House, this elegant first-floor two bedroom flat extends to 1,110 square feet (103.12 sq m) and offers beautifully proportioned accommodation with an exceptional sense of space.

This home boasts an impressive 23' x 18'5" reception room, providing a wonderful setting for both entertaining and everyday living, enhanced by generous natural light and ample space for separate seating and dining areas. A separate, well-appointed kitchen enjoys excellent preparation and cooking space.

The principal bedroom is particularly spacious and is complemented by walk in wardrobes and an en-suite bathroom, while the second double bedroom is served by a separate shower room. An additional area provides an excellent work from home space or studying area.

This outstanding property also has the huge benefit of its own garage.

Wedderburn House is located on one of Hampstead's most desirable tree-lined roads, the property combines classic architectural charm with practical lateral living. Wedderburn Road is perfectly positioned for the boutiques, cafés and restaurants of Hampstead Village and Belsize Park, together with excellent transport connections such as the Northern Line and the open acres of Hampstead Heath. Sole agent.

**CHESTERTONS**



# Wedderburn House

Wedderburn Road, Hampstead NW3

- Elegant first-floor mansion flat
- Approximately 1,110 square feet / 103.12 sq m
- Outstanding 23' x 18'5" reception room
- Two bedrooms & two bathrooms
- Versatile study/home office
- Spacious fitted kitchen
- Share of freehold & a long lease
- Prestigious tree-lined Hampstead address
- Close to Hampstead Village & Belsize Park



**Tenure:** Share of Freehold and a lease with 972 years remaining

**Service Charge:** £2,729 per annum

**Ground Rent:** £90 per annum

**Local Authority:** Camden

**Council Tax Band:** G

Score	Energy rating	Current	Potential
92+	A		
81-91	B		84 B
69-80	C	72 C	
55-68	D		
39-54	E		
21-38	F		
1-20	G		

### *Chestertons Hampstead Sales*

55-56 Hampstead High Street

Hampstead

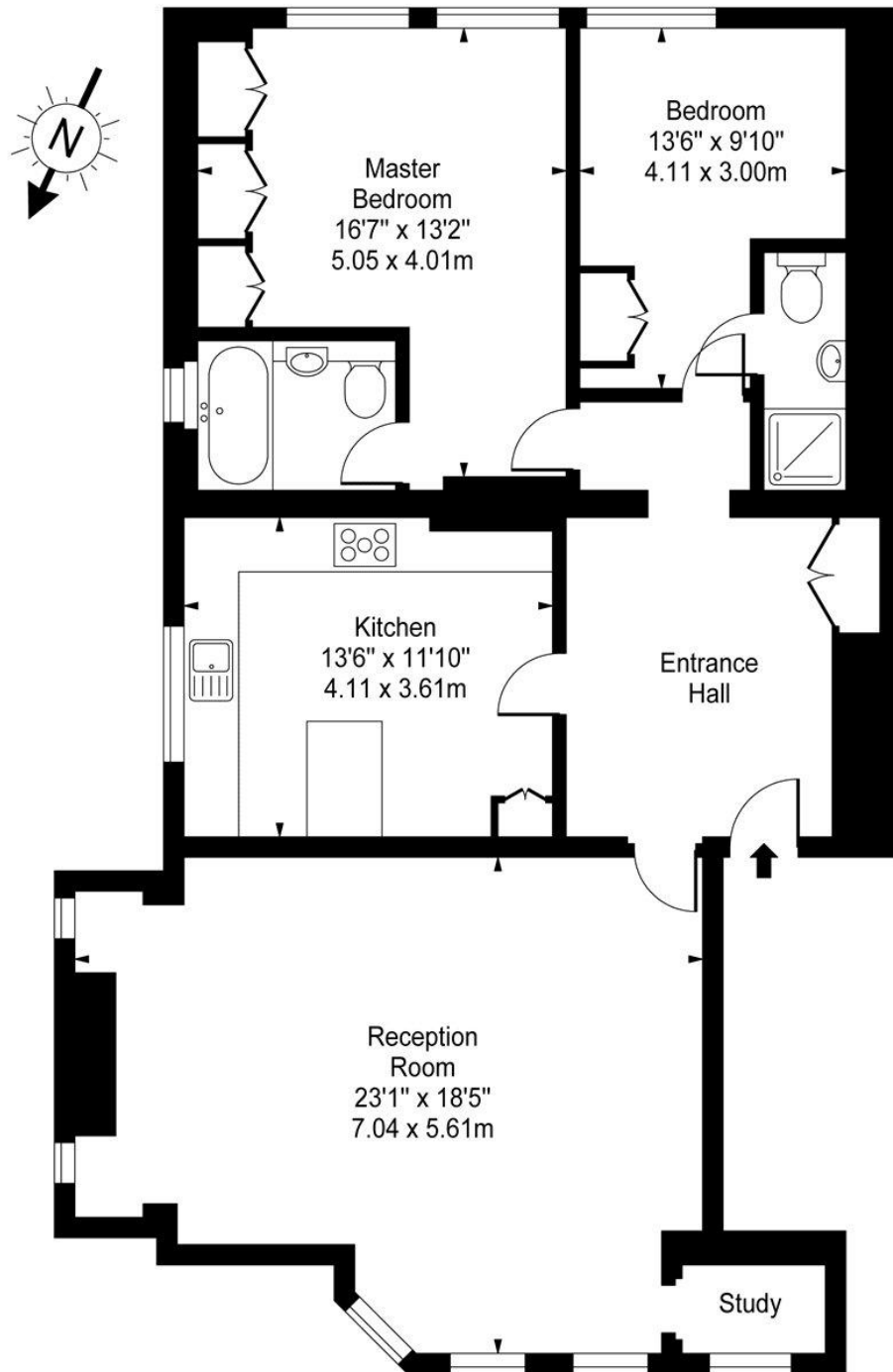
NW3 1QH

[hampstead@chestertons.co.uk](mailto:hampstead@chestertons.co.uk)

020 7794 3311

[chestertons.co.uk](http://chestertons.co.uk)

# Wedderburn House, Wedderburn Road, NW3



First Floor

Approx Gross Internal Area **1110 Sq Ft - 103.12 Sq M**

For Illustration Purposes Only - Not To Scale

[www.goldlens.co.uk](http://www.goldlens.co.uk)

Prepared for Chestertons

Ref. No. 004722J

