



Price

£135,000

Leasehold

3x  2x  1x 

**Gurnard Pines,
Cockleton Lane, Cowes,
Isle of Wight, PO31**

OVER 60?

Secure this property
for up to **59% less!**

Pittis 
Helping you move forwards



Main features

- Semi-detached bungalow in peaceful, woodland setting
- Bright, open-plan living and dining space
- Modern fitting kitchen with plenty of storage
- Private decked balcony
- On-site leisure facilities and woodland walks

Accommodation

GROUND FLOOR

Kitchen / Living Area: 23'2 x 13'5
(7.07m x 4.09m)

Bathroom

Bedroom 1: 14'5 x 11'6 (4.40m x 3.51m)

En-suite

Bedroom 2: 13'1 x 11'3 (3.99m x 3.43m)

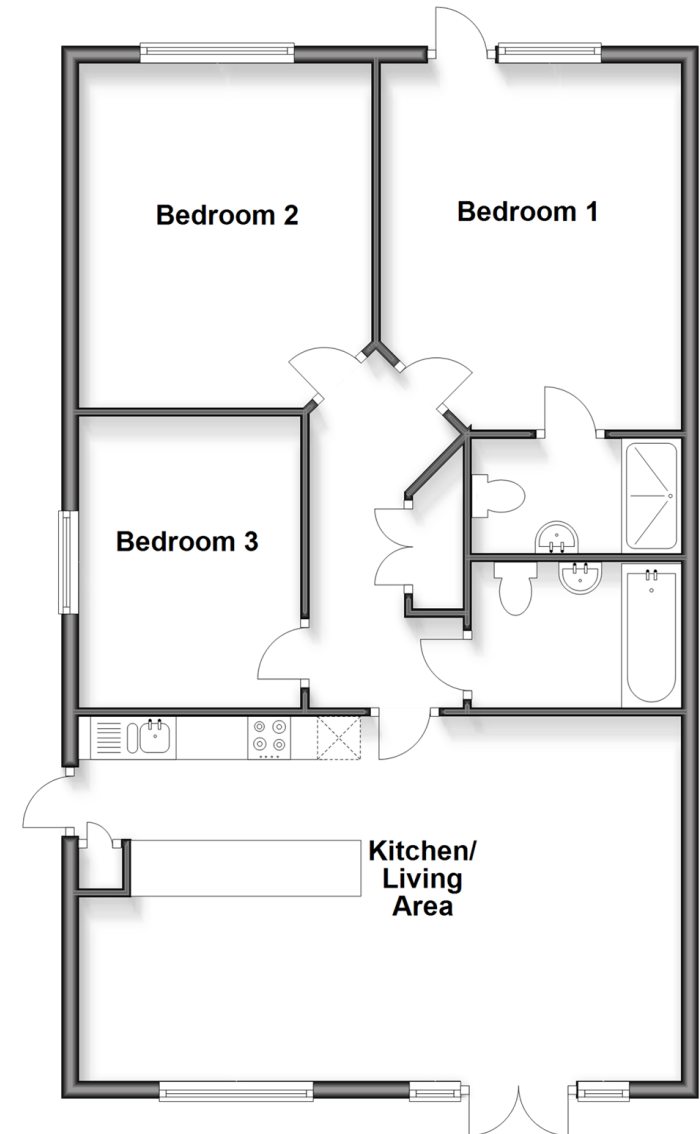
Bedroom 3: 11'1 x 8'5 (3.38m x 2.57m)

OUTSIDE

Front and Rear Garden
Driveway

Ground Floor

Approx. 83.6 sq. metres (899.7 sq. feet)



Call Cowes - 01983 292345 ■ pittis.co.uk

- Legal advice should be taken to verify fixtures/fittings, planning, alterations and/or lease details
- Appliances & services are untested, dimensions are approximate and floor plans are not to scale
- Through a Homewise Home For Life Plan people aged 60+ can secure this property for up to 59% less, by purchasing a Lifetime Lease



60119358/20260309/MB/TB