

19 Whitstable Mews Leeds



2 Bedroom Apartment £140,000

69 Lower Wortley Road
Wortley
Leeds
West Yorkshire
LS12 4SL
Tel: 0113 231 1033
Fax: 0113 203 8333

Web Site
www.kathwells.com

email
sales@kathwells.com

19 Whitstable Mews, Leeds, LS12 6BX

GROUND FLOOR:

Communal Entrance:

Access via a communal entrance hall with stairs rising to the upper floors

Private Entrance Hallway:



Access via a front entrance door, access to the accommodation, wall mounted electric heater

Open Plan Living Space:



Living Room / Dining Area:



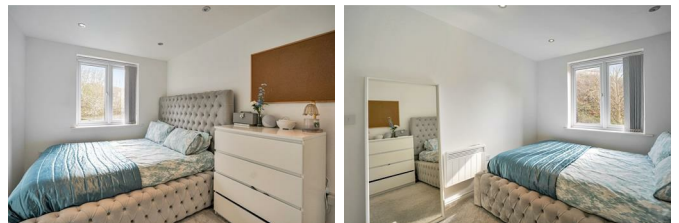
Double glazed window, double glazed French Doors opening onto a Juliette balcony, wall mounted electric heater, television point, ample space for a range of living room furniture and space for a dining table & chairs, semi open to the fitted kitchen

Fitted Kitchen:



Double glazed window, a range of fitted wall, drawer & base units, work surfaces, electric hob with an extractor fan above, built under oven / grill, inset sink & drainer, built in fridge / freezer, plumbing for an automatic washing machine

Bedroom One:



Double glazed window, wall mounted electric heater, ample space for bedroom furniture

Bedroom two:



Double glazed window, wall mounted electric heater

Bathroom / WC:



A white suite comprising of panelled bath with a plumbed shower above & a glazed side screen, low flush WC, wash basin, ladder style central heating radiator / towel warmer

TO THE OUTSIDE:



Gardens:



The property is set within community gardens

Parking:



This property benefits from having a designated parking space as well as space for visitor parking

EPC & Council Tax Band:

Council Tax Band: B / EPC Rating: B

EPC Link:

<https://find-energy-certificate.service.gov.uk/energy-certificate/0752-3892-7486-9328-4885>

Energy Efficiency Rating		Current	Potential
<i>Very energy efficient - lower running costs</i>			
(92 plus) A			
(81-91) B		82	82
(69-80) C			
(55-68) D			
(39-54) E			
(21-38) F			
(1-20) G			
<i>Not energy efficient - higher running costs</i>			
England & Wales		EU Directive 2002/91/EC	

Floor Plan