



CHELSEA CLOISTERS LONDON SW3
£650 PER WEEK AVAILABLE NOW

Hamptons
THE HOME EXPERTS

{ THE PARTICULARS

Chelsea Cloisters London SW3

£650 Per Week
Furnished

-  1 Bedroom
-  1 Bathroom
-  1 Reception

Features

- One Bedroom, - One Bathroom, -
Communal Heating & Hot Water, - 24
Hours Porter, - Lift, - Furnished, - 366
Square Feet, - Council Tax Band E

Council Tax

Council Tax Band E

Hamptons
7 Lower Sloane Street
Sloane Square, London, SW1W 8AH
020 7824 8242
sloanesquarelettings@hamptons.co.uk
www.hamptons.co.uk

{ A BRIGHT THIRD FLOOR ONE BED FLAT WITH LIFT AND 24 HOUR CONCIERGE

The Property

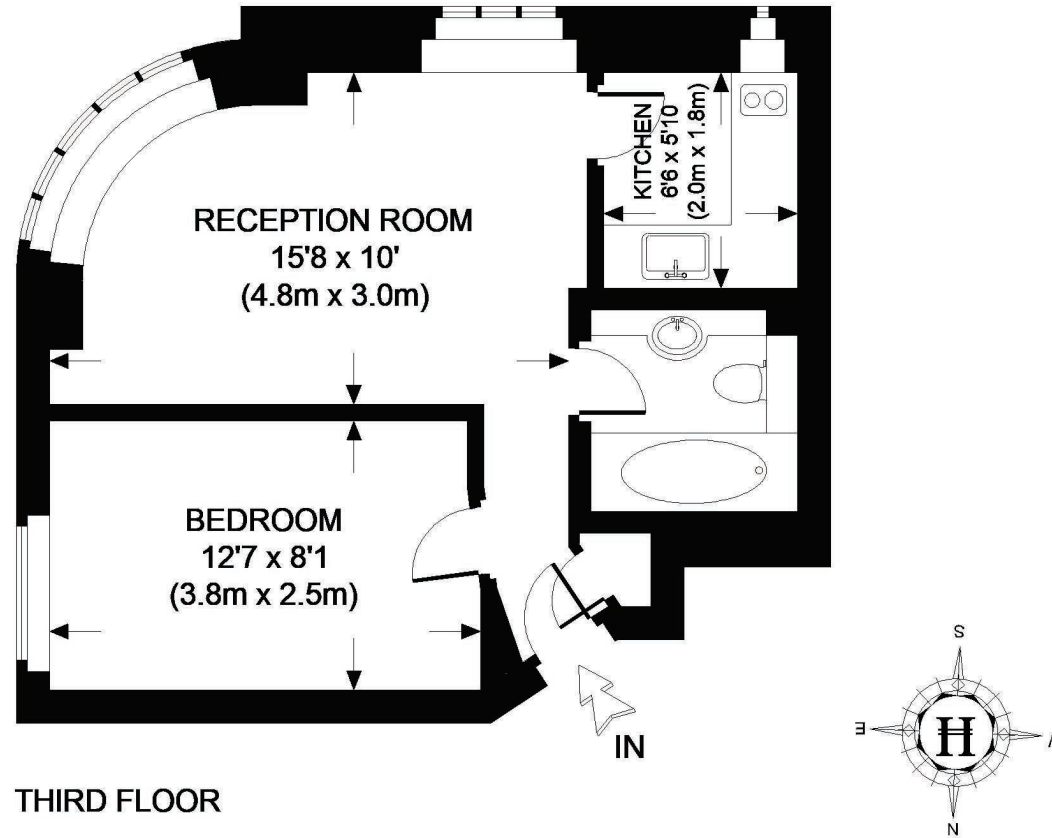
A bright third floor one bedroom apartment in this popular well run portered building in Chelsea. The apartment comprises reception room with wooden flooring with an abundance of natural light by way of dual aspect windows, double bedroom, separate kitchen and bathroom. The property also benefits from 24 hour porter and lift. The rent is inclusive of central heating and hot water. Offered furnished.

Location

Chelsea Cloisters is well located on Sloane Avenue close to the amenities of Sloane Square (Circle and District lines 0.6 miles away) and South Kensington (Circle, District and Piccadilly lines 0.4 miles away). Sloane Avenue is ideally located for the wonderful restaurants in the area and the luxury shopping in Knightsbridge to include Harrods and Harvey Nichols and boutique shopping on Sloane Street to include Prada and more.



CHELSEA CLOISTERS



THIRD FLOOR

APPROXIMATE GROSS INTERNAL AREA = 366 SQ.FT. (34 SQ. M.)

This plan is for layout guidance only. Not drawn to scale unless stated. Windows & door openings are approximate. Whilst every care is taken in the preparation of this plan, please check all dimensions, shapes & compass bearings before making any decisions reliant upon it. Please be advised that Hamptons International / our agents have not seen or reviewed any building regulations or planning permission in relation to works carried out to the property.

For Clarification

We wish to inform prospective tenants that we have prepared these particulars as a general guide and they have been confirmed as accurate by the landlord. We have not verified permissions, nor carried out a survey, tested the services, appliances and specific fittings. Room sizes are approximate and measurement figures rounded: they are taken between internal wall surfaces and therefore include cupboards/shelves, etc. Accordingly, they should not be relied upon for

carpets and furnishings. It should also be noted that all fixtures and fittings, carpeted, curtains/blinds, kitchen equipment and garden statuary, whether fitted or not, are deemed removable by the landlord unless specifically itemised with these particulars. Please enquire in office or on our website for details on holding deposit and tenancy deposit figures.

Energy Efficiency Rating		Current	Potential
92-100	A		
81-91	B		
69-80	C		
55-68	D		
49-54	E		
45-48	F	62	65
1-44	G		

England & Wales EU Directive 2002/91/EC

