



4 Bedroom Detached Bungalow located in Tiptree.

Find us on..



JOHN ALEXANDER
ESTATE AGENTS

FULL DESCRIPTION

OVERVIEW

This beautifully renovated four/five-bedroom detached bungalow offers substantial and versatile single-level living, ideal for modern family life, home working, or those seeking long-term comfort without compromise.

Comprehensively upgraded by the current owners, the property has been thoughtfully modernised to create a high-quality, turnkey home ready to move straight into. Improvements include replacement windows and external doors, a new boiler and hot water cylinder, together with high-quality flooring, joinery and finishes throughout.

At the heart of the property is a stunning open-plan kitchen/diner featuring quartz worktops, premium integrated Neff appliances including oven, coffee machine and combination oven/microwave, together with sliding patio doors opening directly onto the garden - perfect for everyday living and entertaining alike. A spacious lounge with media wall and further patio doors enhances the indoor-outdoor flow and natural light.

The flexible layout offers four/five well-proportioned bedrooms and two modern bathrooms, allowing space for family life, guests or a dedicated home office.

Outside, the property continues to impress with a large private rear garden, side vehicle access and an in-and-out driveway providing ample parking. Situated within the sought-after village of Tiptree and offered with no onward chain, this is a rare opportunity to acquire a high-specification bungalow ready to move straight into.

HALLWAY

BEDROOM ONE

11' 6" x 12' 5" (3.51m x 3.78m)

Double glazed bay window to front, radiator, built in wardrobes.

BEDROOM TWO

9' 7" x 15' 9" (2.92m x 4.8m)

Double window to front, upright radiator, door to garden.

BEDROOM THREE

10' 9" x 12' 5" (3.28m x 3.78m)

Double glazed bay window to front, radiator.

BEDROOM FOUR

10' 9" x 9' 4" (3.28m x 2.84m)

Double glazed bay window to front, radiator.

BEDROOM FIVE/OFFICE

7' 8" x 5' 6" (2.34m x 1.68m)

Double glazed window to side, radiator, built in wardrobe's.



4/5



2



1

Guide Price
£575,000 to
£600,000



FAMILY BATHROOM

9' 3" x 6' 4" (2.82m x 1.93m)

Obscured double glazed window to rear, low level w.c, wash hand basin with storage, panel bath with Aqualisa waterfall shower, traditional heated towel rail

UTILITY CUPBOARD

Plumbing for a washing machine and tumble dryer.

KITCHEN/DINER

10' 7" x 21' 5" (3.23m x 6.53m)

Sliding patio doors to rear, quartz worktops with matching splashback, integrated Neff appliances including dishwasher, fridge, freezer, hide-and-slide oven, coffee machine and combination microwave, two warming drawers, two slimline wine coolers, boiling water tap, matching eye and base level units, kickboard and concealed lighting, double glazed doors leading to lounge.

LOUNGE

13' 9" x 21' 9" (4.19m x 6.63m)

Double glazed sliding patio doors, two double



glazed windows, gas fire with marble surround, media wall.

REAR GARDEN

Mainly laid to lawn with shrub and flower borders, offering a generous outdoor space ideal for families and entertaining. A summer house and shed (both to remain) are included, with the shed benefitting from power, lighting and its own consumer unit. A field gate provides access to the front of the property, with outside tap and power sockets also available.

FRONT OF THE PROPERTY

In-and-out driveway providing comfortable parking for four vehicles (with potential for more if required), side vehicle access to both sides, soffit lighting, two five-bar gates and EV charger.

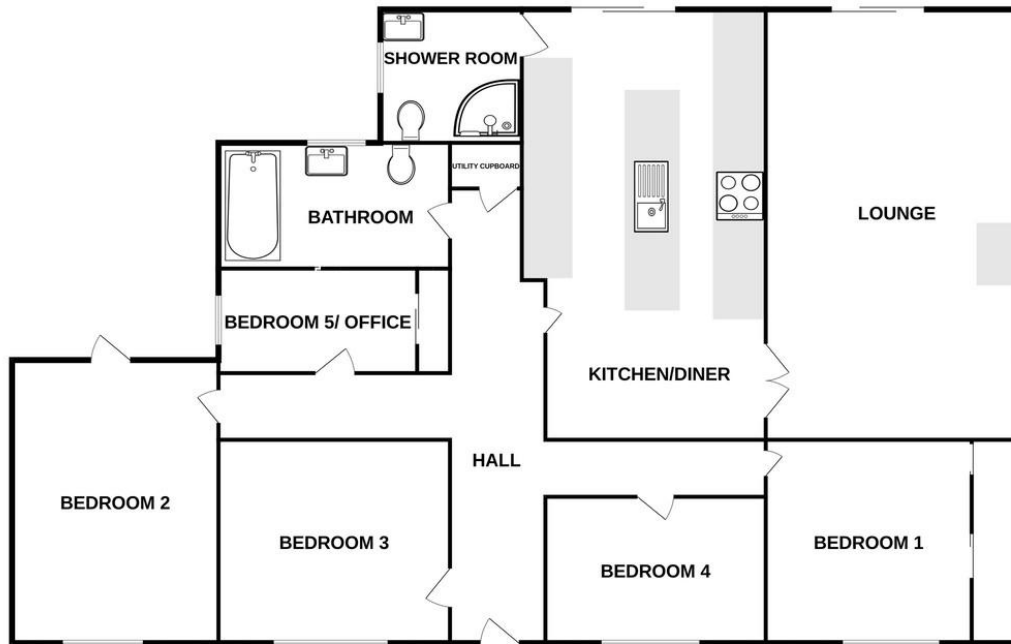




Chapel Road, Tiptree CO5 0RD



GROUND FLOOR



Whilst every attempt has been made to ensure the accuracy of the floorplan contained here, measurements of doors, windows, rooms and any other items are approximate and no responsibility is taken for any error, omission or mis-statement. This plan is for illustrative purposes only and should be used as such by any prospective purchaser. The services, systems and appliances shown have not been tested and no guarantee as to their operability or efficiency can be given.
Made with Metropix ©2025

CONTACT
1 Church Road
Tiptree
Colchester
Essex
CO5 0LG

E info@john-alexander.co.uk

T 01621 814334 www.john-alexander.co.uk

Find us on..



JOHN ALEXANDER
ESTATE AGENTS