



22 Kings Court South

Chelsea Manor Gardens, London, , SW3 5EG

£675,000

Property Summary

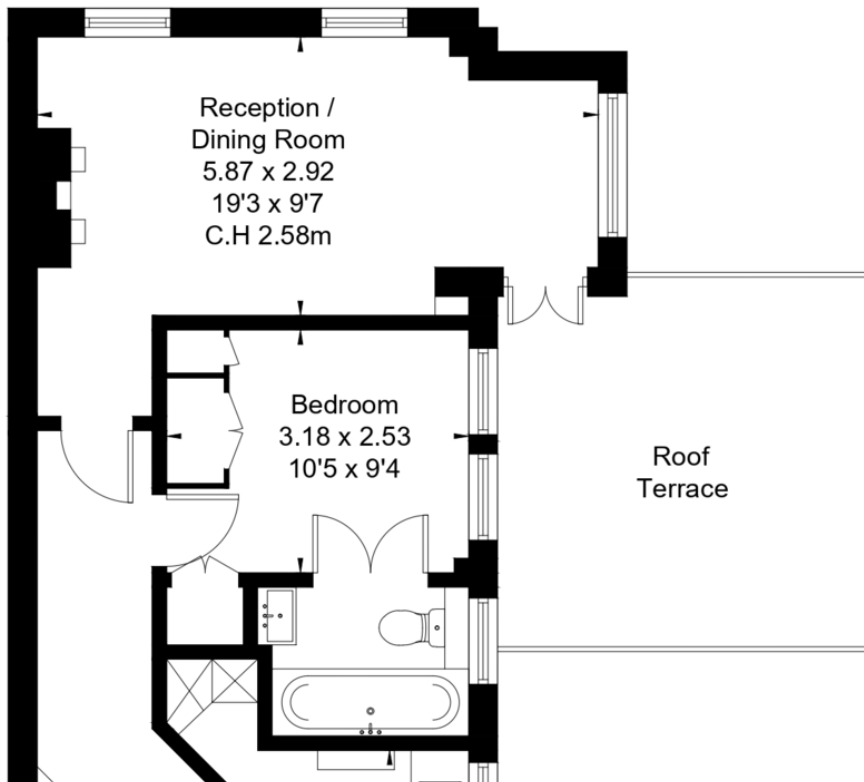
This charming one bedroom flat is on the second floor of this smart early 20th century mansion block located just behind Kings Road. The apartment benefits from a concierge, communal gardens and 2 lifts to the second floor. The very impressive private roof terrace provides an outdoor escape for entertaining or relaxation.



%epcGraph_c_1_245%

KINGS COURT SOUTH, CHELSEA MANOR GARDENS, SW3

Approximate Floor Area = 45 sq m / 484 sq ft



- Double bedroom
- Reception room
- Bathroom
- Kitchen
- Communal gardens
- Private roof terrace
- Concierge
- Long lease 983 years
-
-

52 Grosvenor Gardens, London, SW1W 0AU E: info@primeportfolio.com

www.primeportfolio.com T: +44 020 7409 0209



These particulars and the descriptions and measurements herein do not constitute an offer or contract and whilst our best efforts have been made to ensure their accuracy, this cannot be guaranteed. Purchasers or lessees must satisfy themselves by inspection or otherwise as to the correctness of each of the statements contained in these particulars. No warranty is given by the Agents or the Vendors or Lessors in relation to these particulars.

Prime Portfolio Ltd Registered in England No. 05174897 Registered Office: 14a High Street, Reigate, Surrey RH2 9AY