


PROMINENCE
ESTATES



RESIDENTIAL
PROPERTY EXPERTS

COVENTRY, WARWICKSHIRE
& LEAMINGTON SPA

QUEEN ISABELS AVENUE,
COVENTRY, CV3 5GF

£650 PER CALENDAR

QUEEN ISABELS AVENUE

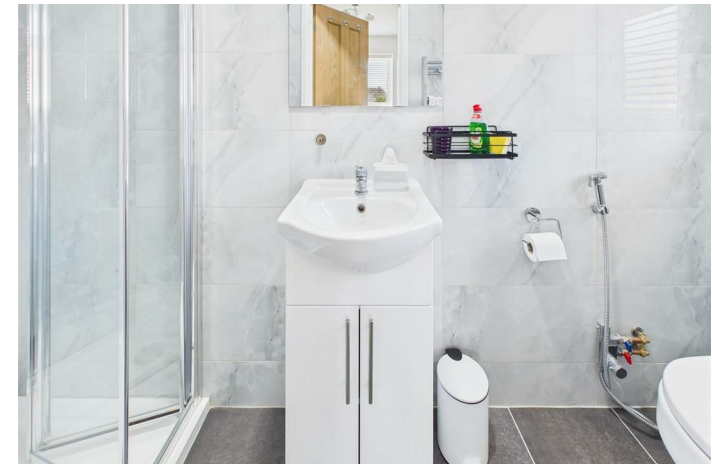


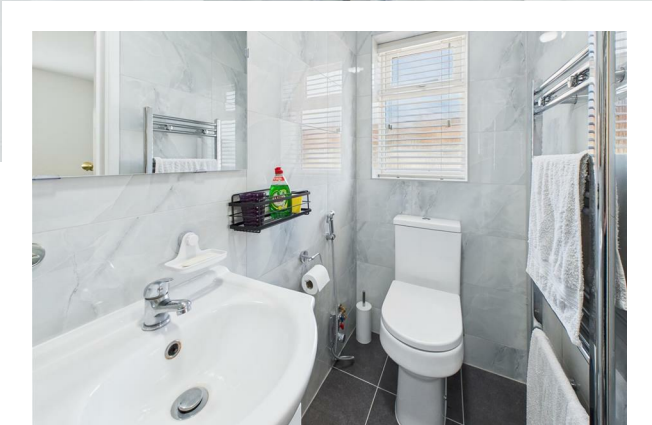
PROMINENCE
ESTATES

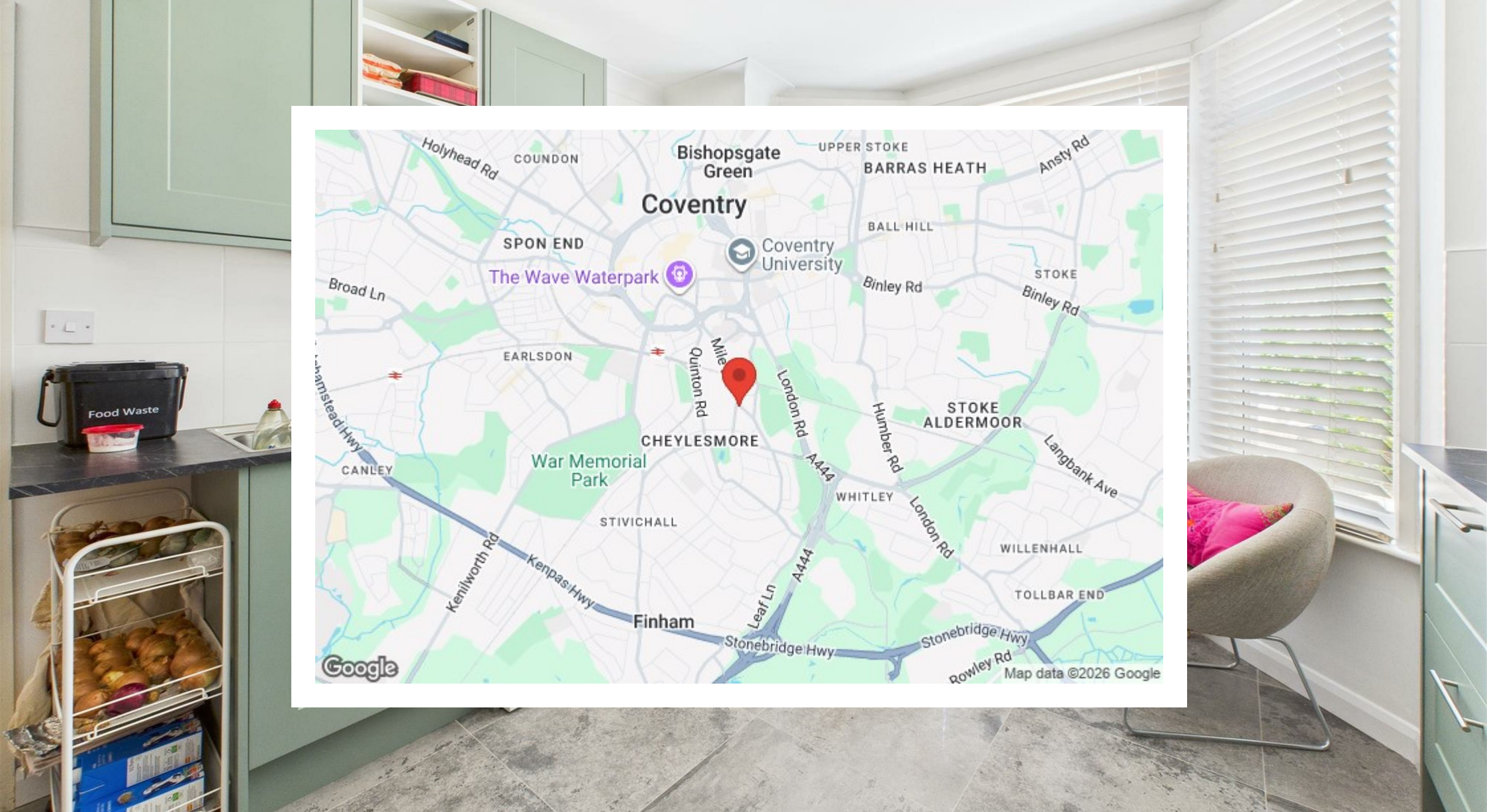
A well-furnished en-suite room is available from 1st September for a single occupant in a two-person house share, with all bills included (tenant to pay £30 towards council tax if working). The property comes fully furnished and benefits from a communal ensuring a tidy living space. The shared kitchen features a pool/table tennis table, perfect for unwinding at home.

Conveniently located within walking distance of Coventry city centre and Daventry Road shops, and close to Jaguar Land Rover, this home offers both comfort and accessibility. Ideal for someone seeking a relaxed, well-equipped home in a prime location!

To arrange a viewing please contact Prominence Estates on 02476309826







Prominence Estates
5 Queen Isabels Avenue,
Cheylesmore,
Coventry,
CV3 5GE

02476 309 826
lettings@prominenceestates.com
www.prominenceestates.com


PROMINENCE
ESTATES