

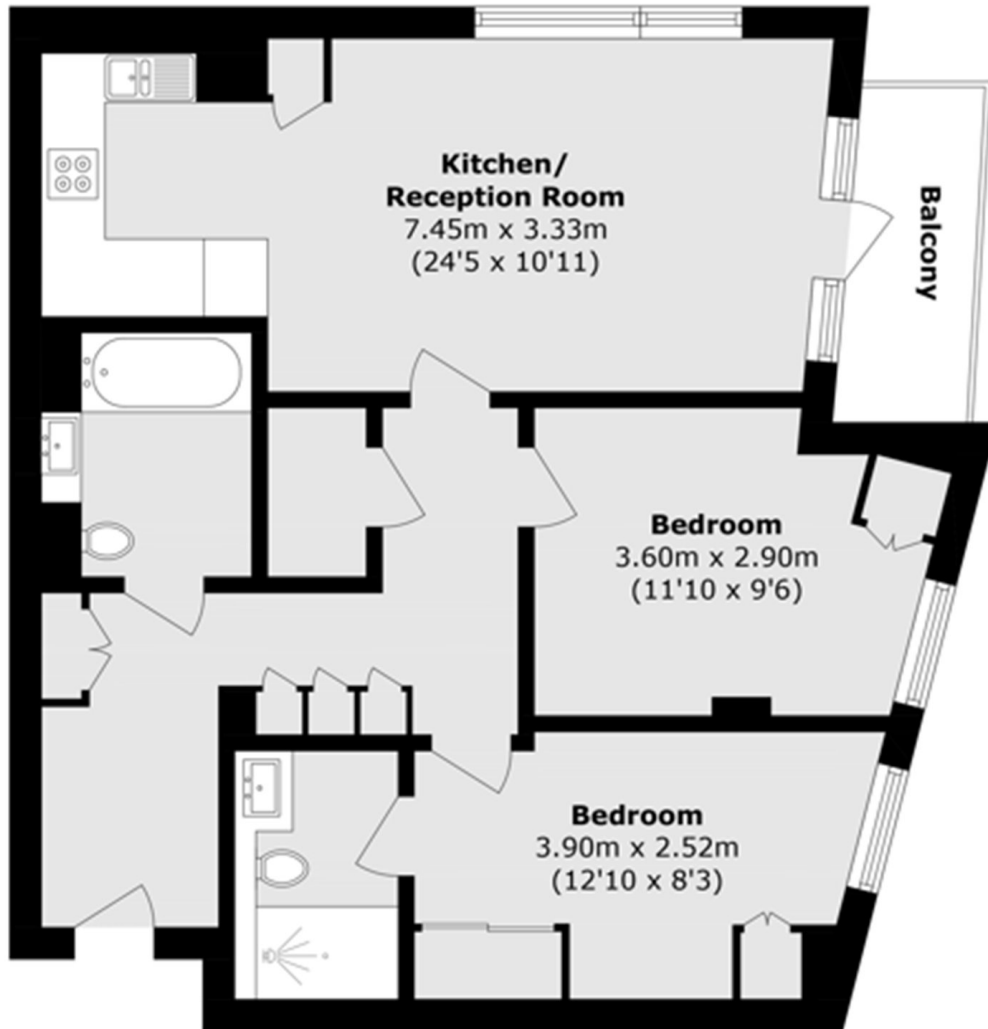


LINCOLN PLAZA, E14

£650,000

A stunning modern 2 bedroom/2 bathroom apartment located on the 23rd floor of Talisman Tower, Lincoln Plaza. A separate west-facing balcony offers views of the city. The apartment benefits from a bright and airy feel with ceiling to floor windows, a contemporary kitchen with fully integrated appliances.

- 24 hour concierge
- Allocated parking space
- Gym and Swimming Pool
- Service Charge: £5,494



Total area (approx.): 68.2 sq. m (734.1 sq. ft)
Balcony area (approx.): 3.8 sq. m (40.9 sq. ft)

LiFE RESIDENTIAL

36 Millharbour, London, E14

9JS

Sales: 020 3668 1033

Lettings: 020 3668 1030

Energy Rating: . We aim to make our particulars both accurate and reliable. However they are not guaranteed; nor do they form part of an offer or contract. If you require clarification on any points then please contact us, especially if you're traveling some distance to view. Please note that appliances and heating systems have not been tested and therefore no warranties can be given as to their good working order.